

NEW 2 BEDROOM APARTMENTS LOCATED IN THE CENTER OF LIMASSOL

2 700 €/month

Property Code:	6316	Type:	Long-term rent - Apartment
Location:	Limassol - CITY CENTER	Internal Area:	80 m ²
Bedrooms:	2	Bathrooms:	2
Renovation:	Modern		

Property features:

Air Conditioning	Under Floor Heating	Air Condition	Telephone Line
Furnished	VRV central ceiling system	Solar panels for hot water	Washing machine
Cooker	Parking	Refrigerator	Balcony

Description:

New 2 bedroom apartments in the center of Limassol near Era Apollon.

Very bright and spacious new 2-bedroom apartments with two bathrooms, huge windows in the bedrooms, large veranda, covered parking and storage;

Underfloor heating (economical water type);

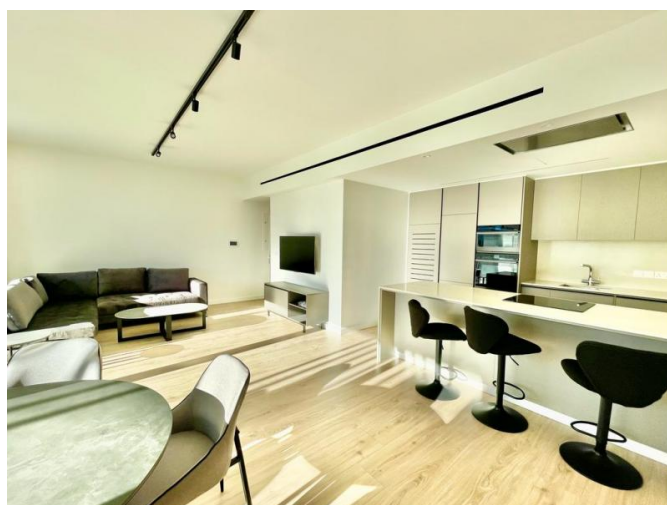
VRV AC system;

Furnished with new furniture and equipped with appliances, including dishwasher, drying machine, microwave, TV;

Quiet location within walking distance to the Era Apollon shopping center, supermarkets, cafes, pharmacies, banks etc. and very convenient access to Makariou Avenue and city center.

NEW 2 BEDROOM APARTMENTS LOCATED IN THE CENTER OF LIMASSOL

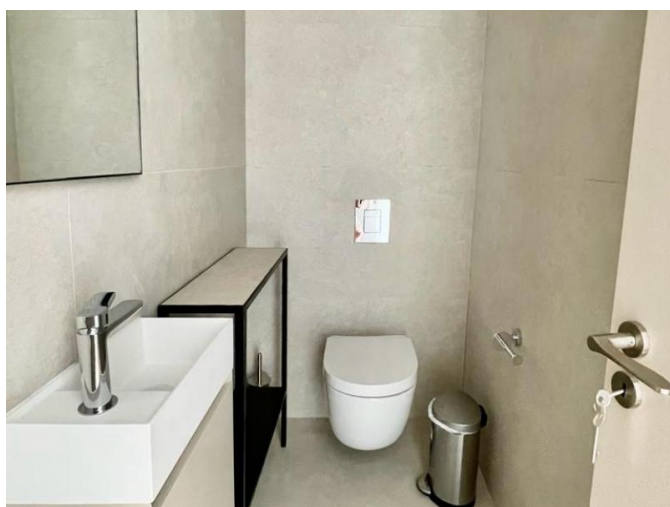
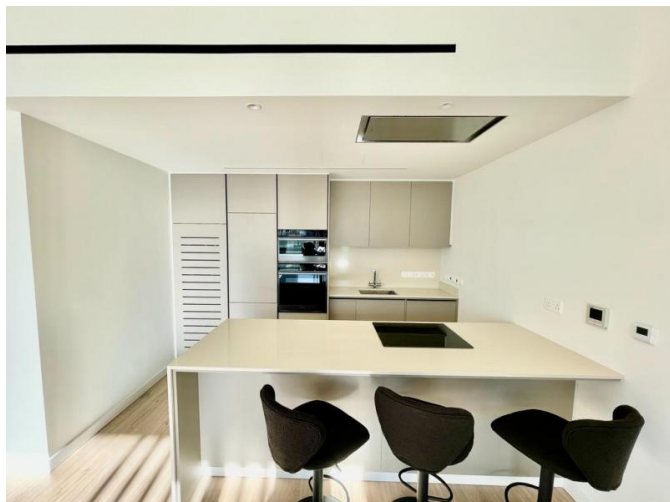
2 700 €/month



07.02.2026

NEW 2 BEDROOM APARTMENTS LOCATED IN THE CENTER OF LIMASSOL

2 700 €/month



07.02.2026