

**COMFORTABLE 4 BEDROOM HOUSE
WITHIN SMOOTH ACCESS TO THE HIGH
WAY**

3 000 €/month
~~3 500 €/month~~

Property Code:	6358	Type:	Long-term rent - House/Villa
Location:	Limassol - YPSONAS	Internal Area:	185 m ²
Bedrooms:	4	Bathrooms:	3
Renovation:	Modern	Year of construction:	2017
Distance to the sea:	5 km	Distance to airport:	50 km
Uncovered verandas, m²:	55		

Property features:

Furnished	Store Room	Solar panels for hot water	Double Glazing
Garage	Oven	Washing machine	Dish washer
Microwave	Cooker	Extractor Fan	Parking
Refrigerator	Furniture		

Description:

High quality comfortable 4 bedroom house in convenient location within easy access to high way, international schools Heritage, Iceland, Pascal

Features

Fully furnished

Security entrance door

Gated entrance

2 uncovered parkings

3 bedrooms

1 office

1 main bathroom

1 en-suite

1 guest toilet

A/C in all rooms

Covered area: 185m²

Uncovered area:55m²

Construction year: 2017

**COMFORTABLE 4 BEDROOM HOUSE
WITHIN SMOOTH ACCESS TO THE HIGH
WAY**

3 000 €/month

~~3 500 €/month~~

Photovoltaics

Solar panel

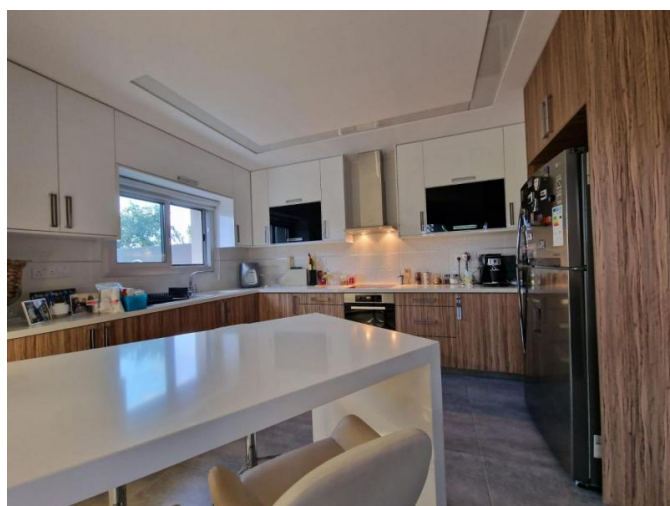
Energy Efficiency: A

Rental Price: €3,000 per month (including internet) (+ water bill and electricity) available immediately



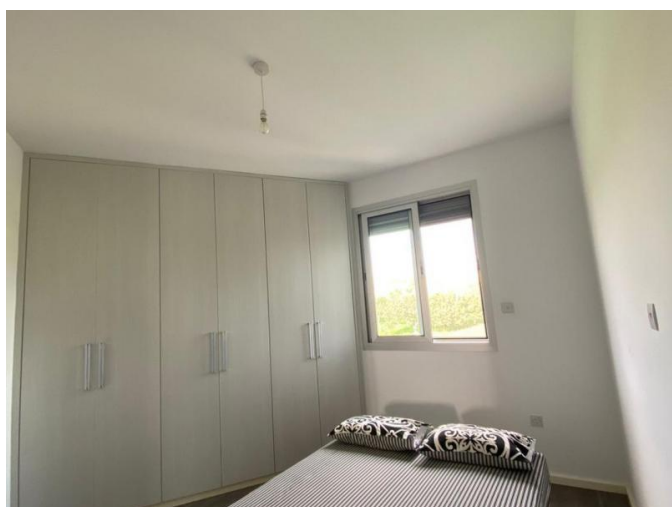
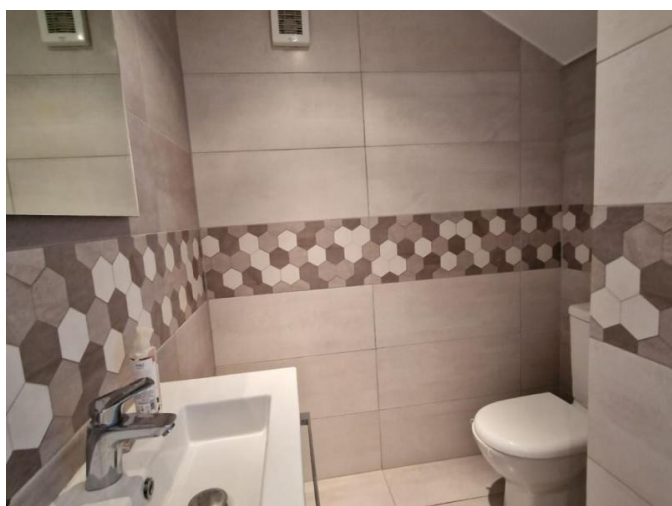
**COMFORTABLE 4 BEDROOM HOUSE
WITHIN SMOOTH ACCESS TO THE HIGH
WAY**

3 000 €/month
~~3 500 €/month~~



**COMFORTABLE 4 BEDROOM HOUSE
WITHIN SMOOTH ACCESS TO THE HIGH
WAY**

3 000 €/month
~~3 500 €/month~~



**COMFORTABLE 4 BEDROOM HOUSE
WITHIN SMOOTH ACCESS TO THE HIGH
WAY**

3 000 €/month
~~3 500 €/month~~

