

**OFFICE OF 400 SQM IN THE CITY CENTRE  
WITH PANORAMIC VIEWS**

---

7 000 €/month

<b>Property Code:</b>	789	<b>Type:</b>	Long-term rent - Office
<b>Location:</b>	Limassol	<b>Internal Area:</b>	400 m <sup>2</sup>
<b>Renovation:</b>	Cosmetic	<b>Floor:</b>	3
<b>Number of floors:</b>	7	<b>VAT:</b>	PLUS

**Property features:**

---

Unfurnished	Parking - Covered	Parking - Uncovered	Telephone Line
Double Glazing	Extractor Fan	Parking	

**Description:**

---

Office in a heart of city centre, on busy road, with easy access to all amenities and high way. Situated in the well maintained commercial building and has panoramic views.

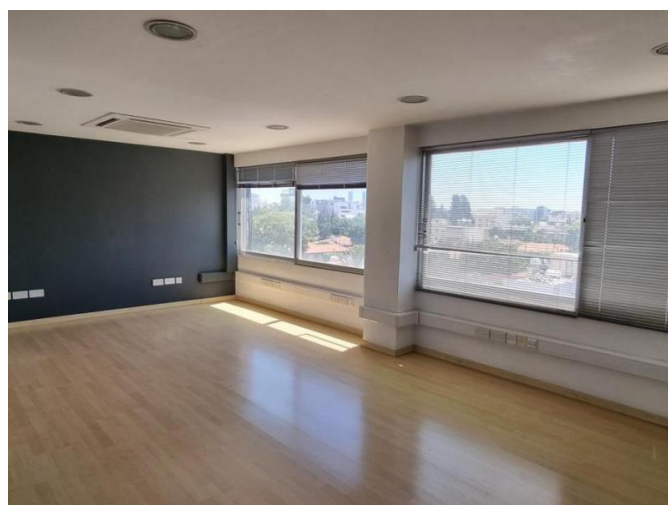
The space is open plan of 400 sqm or divided in 6-8 rooms, has 2 wc, 1 kitchen, server room, conference room, raised floor.

Parking places (garage) in a basement and on a ground floor.

**OFFICE OF 400 SQM IN THE CITY CENTRE  
WITH PANORAMIC VIEWS**

---

7 000 €/month



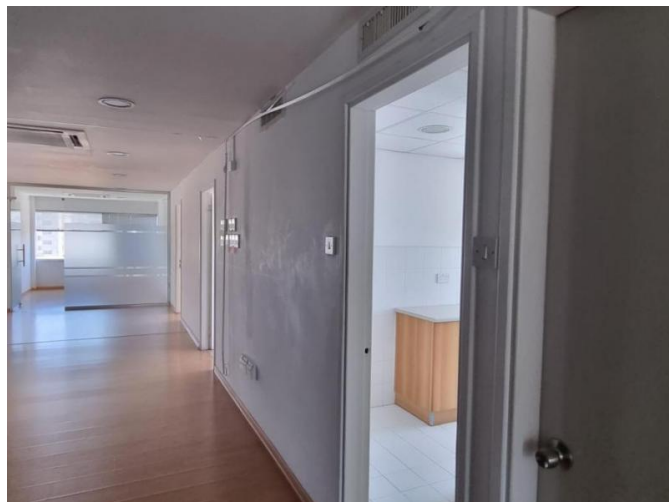
---

06.04.2026

**OFFICE OF 400 SQM IN THE CITY CENTRE  
WITH PANORAMIC VIEWS**

---

7 000 €/month



**OFFICE OF 400 SQM IN THE CITY CENTRE  
WITH PANORAMIC VIEWS**

---

7 000 €/month

