

Property Code:	6663	Type:	Long-term rent - Apartment
Location:	Limassol - POLEMIDIA	Internal Area:	55 m <sup>2</sup>
Bedrooms:	1	Bathrooms:	1
Renovation:	Modern	Floor:	2
Number of floors:	3	Energy class:	A
Distance to the sea:	2.5 km	Distance to airport:	65 km
Covered verandas, m <sup>2</sup> :	15		

Property features:

2nd Floor Apartment	Air Conditioning	Covered Parking	Elevator
Furnished	Storage	Air Condition	Parking - Covered
Telephone Line	Furnished	Store Room	Solar panels for hot water
Double Glazing	Oven	Washing machine	Cooker
Extractor Fan	Parking	Refrigerator	Balcony
Furniture			

Description:

Welcome to your new home in the vibrant area of Kato Polemedia. This spacious 1-bedroom apartment offers 55 sq.m. of internal living space, complemented by an additional 15 sq.m. of a covered veranda, perfect for enjoying the serene views of the city and mountains.

The apartment features an open-plan kitchen and living room area, designed to provide a modern and functional space for both cooking and relaxation. The large bedroom offers ample space for comfort, while the bathroom is equipped with a convenient shower. Step outside onto the spacious balcony, where you can unwind and take in the beautiful surroundings.

Located just 10-15 minutes' driving distance from the city center, this apartment provides easy access to all the amenities Limassol has to offer. You'll find a Sklavenitis supermarket only 150 meters away, and a pharmacy just 350 meters from your doorstep, ensuring that all your daily needs are met with ease.

Ideal for professionals or couples, this apartment is situated in a new building, only 1.5 years old. It boasts modern features such as double glazed windows, a storage room, and covered parking. The area is quiet, providing a peaceful retreat from the hustle and bustle of the city. Additionally, the apartment is energy efficient, with an A energy level rating.

**Don't miss out on this exceptional living space in Kato Polemedia. Contact us today to schedule a viewing and make this apartment your new home.**

**MODERN 1-BEDROOM APARTMENT WITH  
CITY AND MOUNTAIN VIEWS**

---

1 350 €/month

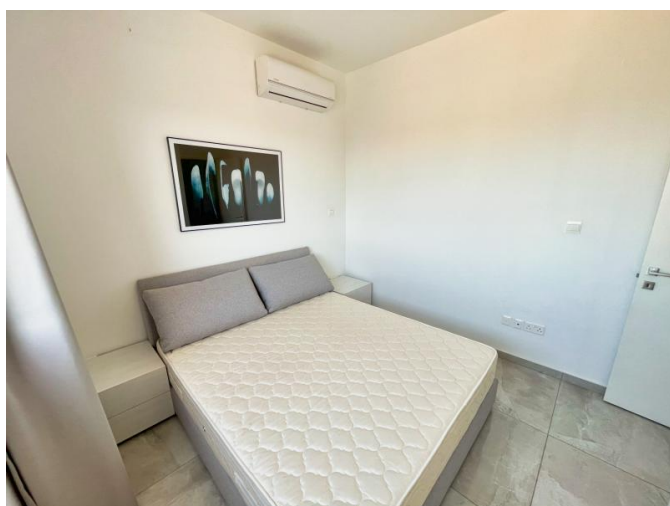




## MODERN 1-BEDROOM APARTMENT WITH CITY AND MOUNTAIN VIEWS

---

1 350 €/month



---

24.02.2026