

Property Code:	6669	Type:	Long-term rent - Apartment
Location:	Limassol - POTAMOS GERMASOGIA	Internal Area:	95 m²
Bedrooms:	2	Bathrooms:	2
Renovation:	Modern	Floor:	2
Number of floors:	2	Heating:	Underfloor heating
Energy class:	A	Year of construction:	2024
Distance to the sea:	400 m	Distance to airport:	65 km
Status:	New		

Property features:

Air Condition	Telephone Line	Solar panels for hot water	Double Glazing
Oven	Washing machine	Cooker	Extractor Fan
Parking	Refrigerator	Balcony	Furniture

Description:

Welcome to your new home! This spacious 2-bedroom apartment, boasting a generous 95m² of living space, is a perfect blend of comfort and convenience, with dedicated parking and ample storage in a brand-new residence.

This 2-bedroom residence defines sophistication, featuring a terrace offering a panoramic spectacle of the skyline.

Step inside to discover a gourmet kitchen adorned with top-of-the-line appliances. The living space is enhanced by fully natural light that bathes the interior. Impeccably finished to an extremely high standard, every detail has been meticulously curated to create an ambiance of refined elegance. Two bedrooms good size with wardrobes give you enough space for storage of your clothing.

NEW 2-BEDROOM APARTMENT CLOSE TO THE SEA

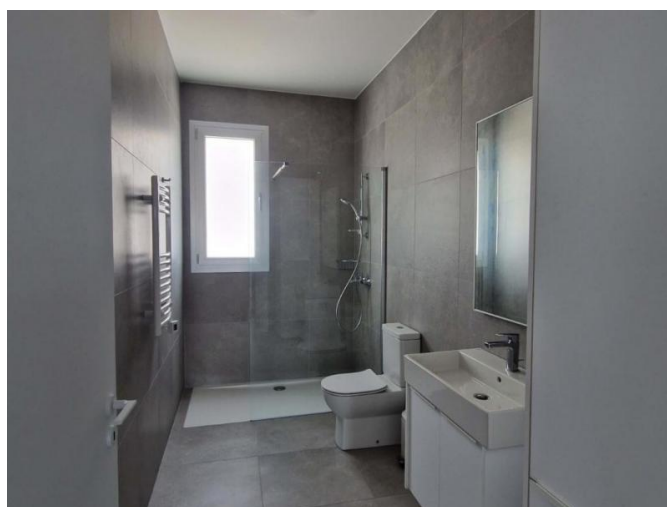
2 300 €/month



24.02.2026

NEW 2-BEDROOM APARTMENT CLOSE TO THE SEA

2 300 €/month



24.02.2026