

MODERN 2 BEDROOM APARTMENT CLOSE TO ST.NICOLAS ROUNDABOUT

2 200 €/month

Property Code:	6716	Type:	Long-term rent - Apartment
Location:	Limassol - NEAPOLIS	Internal Area:	85 m ²
Bedrooms:	2	Bathrooms:	2
Renovation:	Modern	Floor:	4
Number of floors:	5	Year of construction:	2022
Distance to the sea:	350 m	Distance to airport:	60 km
Covered verandas, m²:	15		

Property features:

Air Condition	Parking - Covered	Telephone Line	Furnished
Store Room	Solar panels for hot water	Double Glazing	Oven
Washing machine	Dish washer	Microwave	Cooker
Parking	Refrigerator	Balcony	Furniture

Description:

Modern and spacious 2 bedroom apartment sits on the 4th floor of new building in the most desirable area of Limassol. Walking distance to the sea and all amenities, such as offices, banks, supermarkets, restaurants.

Apartment consists of open space living/ kitchen area with spacious veranda, 2 double bedrooms, 2 bathrooms, storage room and covered parking space.

Apartment is fully equipped with high quality furniture, electric appliances and all household utilities.

Viewings are highly recommended to appreciate the quality of property.

Apartment is ready to move in under conditions: Contract for 1 year, monthly rent 2200 eur + 40 eur Common expenses, Deposit (refundable) 3000 eur, Utility bills - to be transferred onto Tenant

MODERN 2 BEDROOM APARTMENT CLOSE TO ST.NICOLAS ROUNDABOUT

2 200 €/month



25.02.2026

MODERN 2 BEDROOM APARTMENT CLOSE TO ST.NICOLAS ROUNDABOUT

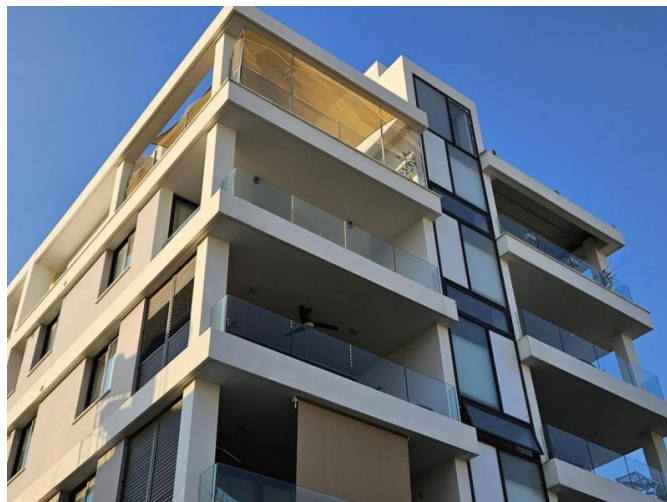
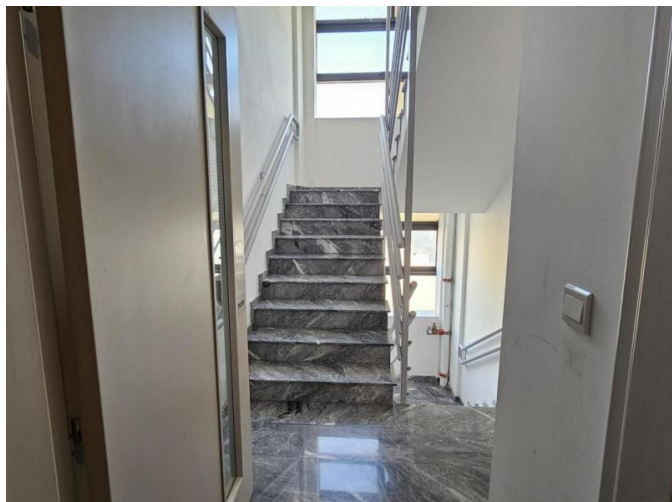
2 200 €/month



25.02.2026

MODERN 2 BEDROOM APARTMENT CLOSE TO ST.NICOLAS ROUNDABOUT

2 200 €/month



25.02.2026

MODERN 2 BEDROOM APARTMENT CLOSE TO ST.NICOLAS ROUNDABOUT

2 200 €/month



25.02.2026