

SPACIOUS AND MODERN 2 BR APARTMENT WITH SEA VIEW IN A COMPLEX

1 200 €/month

Property Code:	879	Type:	Long-term rent - Apartment
Location:	Limassol - POTAMOS GERMASOGIA	Internal Area:	90 m ²
Bedrooms:	2	Bathrooms:	2
Distance to the sea:	100 m	Distance to airport:	55 km
Covered verandas, m²:	20		

Property features:

Common Pool	Air Condition	Parking - Covered	Parking - Uncovered
Furnished	Solar panels for hot water	Double Glazing	Garden
Oven	Washing machine	Dish washer	Microwave
Cooker	Extractor Fan	Parking	Refrigerator
Balcony	Furniture		

Description:

SPACIOUS and MODERN 2 bedroom APARTMENT with nice SEA VIEW in a COMPLEX IN TOURIST AREA. This property is a part of a complex with a huge swimming pool, tennis court and a nice garden. Only a few steps to the beach! It consists of a semi-open plan kitchen/dining/ sitting area, separate 2 double bedrooms, one en-suite, full family bathroom. There is a spacious veranda with open views of the sea and mountain, a modern design, parking place.

Rental price - 1200 euro including common expenses.

SPACIOUS AND MODERN 2 BR APARTMENT WITH SEA VIEW IN A COMPLEX

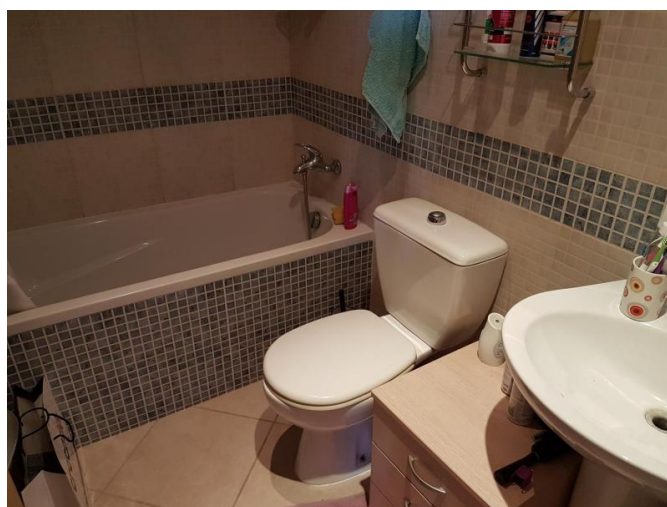
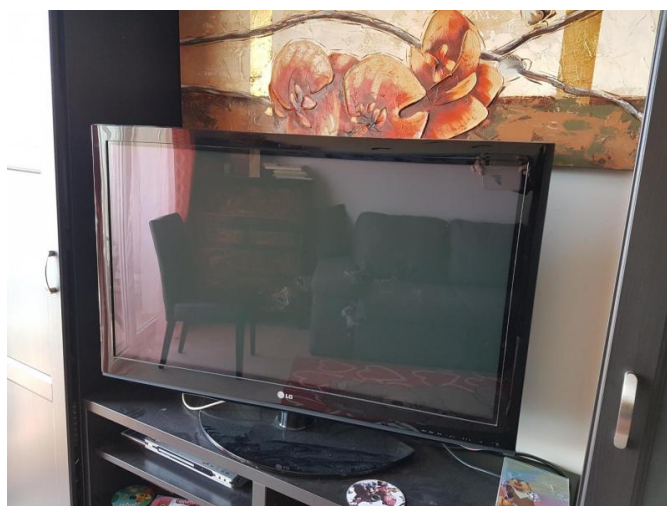
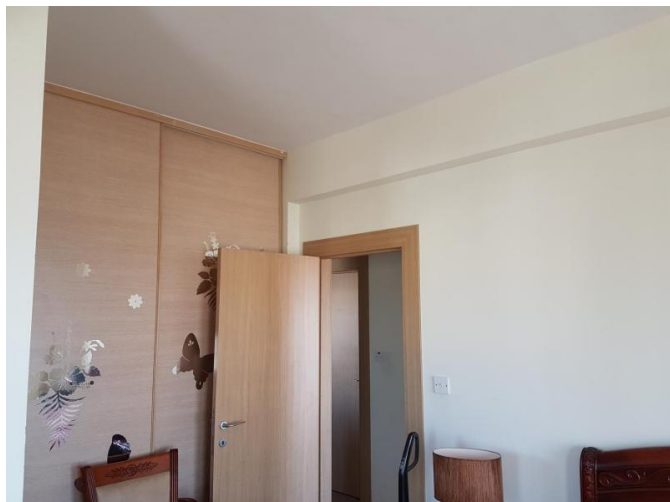
1 200 €/month



20.02.2026

SPACIOUS AND MODERN 2 BR APARTMENT WITH SEA VIEW IN A COMPLEX

1 200 €/month



SPACIOUS AND MODERN 2 BR APARTMENT WITH SEA VIEW IN A COMPLEX

1 200 €/month



20.02.2026