

400 SQ M SHOW ROOM FOR RENT NEAR THE NEW PORT

2 500 €/month

Property Code:	880	Type:	Long-term rent - Shop
Location:	Limassol - NEW PORT	Internal Area:	400 m ²
Renovation:	Renovated	Floor:	0
Number of floors:	2		

Property features:

Unfurnished	Air Condition	Parking - Uncovered	Telephone Line
Store Room	Parking		

Description:

The showroom consists of 200 sq m space on the ground floor and 200 sq m on the 1st floor. There are also WC, storage and kitchenette. The exterior will be repainted according to the tenant's needs. There is also parking space for 7-8 cars in front. It is located on a main commercial avenue, close to the port.

Will be available by the end of February 2022!

400 SQ M SHOW ROOM FOR RENT NEAR THE NEW PORT

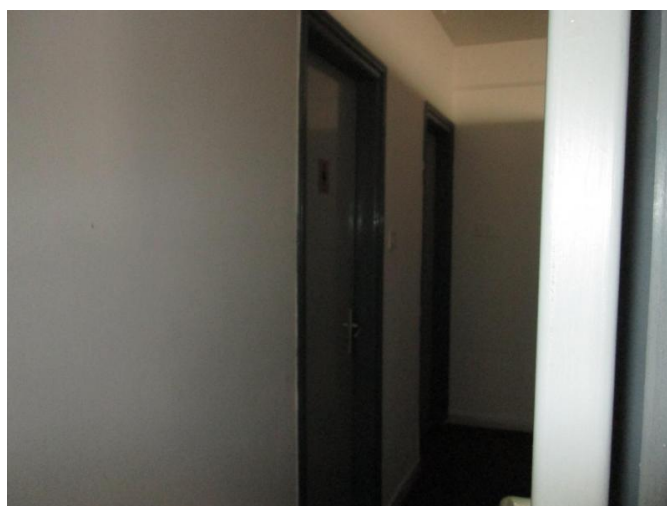
2 500 €/month



17.04.2024

400 SQ M SHOW ROOM FOR RENT NEAR THE NEW PORT

2 500 €/month



17.04.2024