

## COSY 2 BEDROOM APARTMENT IN A COMPLEX OPPOSITE THE BEACH

1 400 €/month

<b>Property Code:</b>	892	<b>Type:</b>	Long-term rent - Apartment
<b>Location:</b>	Limassol - POTAMOS GERMASOGIA	<b>Internal Area:</b>	87 m <sup>2</sup>
<b>Bedrooms:</b>	2	<b>Bathrooms:</b>	1
<b>Sleeps:</b>	2	<b>Floor:</b>	2
<b>Number of floors:</b>	3	<b>Distance to the sea:</b>	12 m
<b>Distance to airport:</b>	60 km		

### Property features:

Common Pool	Air Condition	Parking - Covered	Telephone Line
Furnished	Store Room	Solar panels for hot water	Double Glazing
Garden	Washing machine	Cooker	Extractor Fan
Parking	Refrigerator	Balcony	

### Description:

Perfectly located opposite the beachfront in the tourist area of Limassol, residents can enjoy a swim, or dine in one of many restaurants along the way. The two bedroom apartment of 87 sqm has the following:

2 bedrooms  
1 bathroom  
Open plan kitchen dining and living room area  
Veranda 12 sqm  
Furniture & Curtains  
Lightings  
Electrical appliances & A/C  
Covered parking  
Store room  
12m from the sea  
Common swimming pool  
24-hour security  
Playground  
Summer bar  
Luscious gardens

RENT 1400 EURO PER MONTH

## COSY 2 BEDROOM APARTMENT IN A COMPLEX OPPOSITE THE BEACH

---

1 400 €/month



---

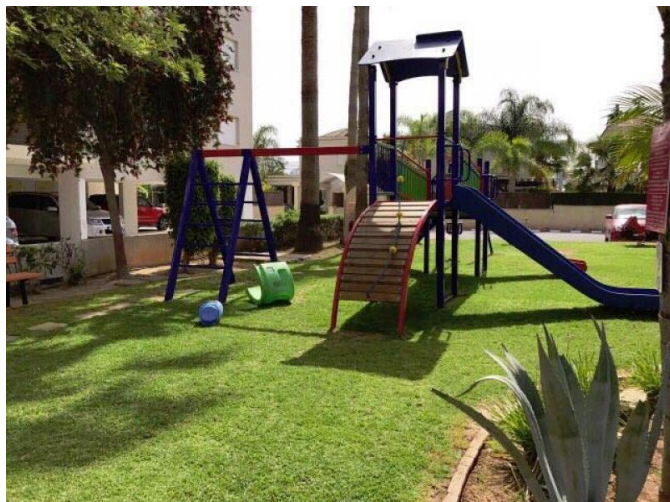
25.02.2026



## COSY 2 BEDROOM APARTMENT IN A COMPLEX OPPOSITE THE BEACH

---

1 400 €/month



---

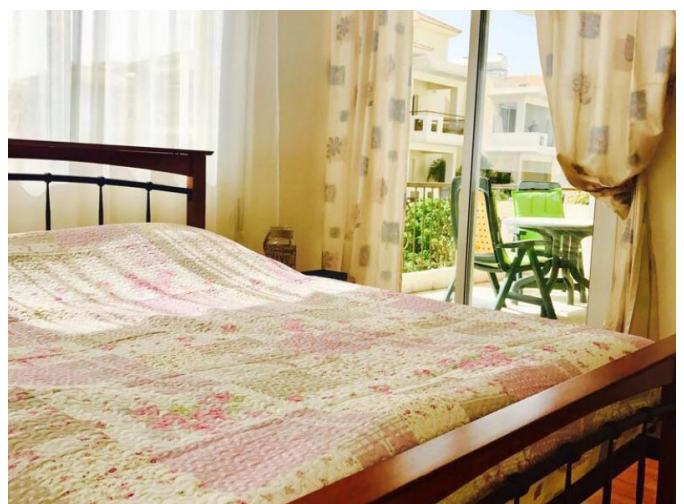
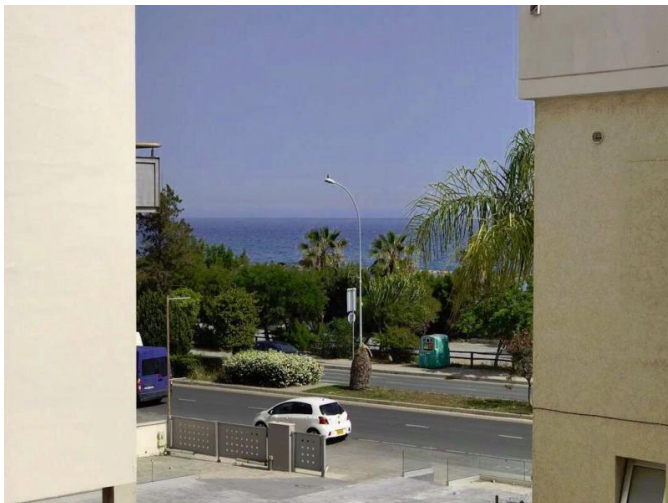
25.02.2026



## COSY 2 BEDROOM APARTMENT IN A COMPLEX OPPOSITE THE BEACH

---

1 400 €/month



---

25.02.2026