

UNIQUE 2-BEDROOM APARTMENT IN SKYSCRAPER

€ 6 500 /month

Property Code:	6805	Type:	Long-term rent - Apartment
Location:	Limassol - POTAMOS GERMASOGIA	Internal Area:	91 m ²
Bedrooms:	2	Bathrooms:	1
Renovation:	Modern	Floor:	12
Number of floors:	24	Energy class:	A
Distance to the sea:	300 m	Covered verandas, m²:	26

Property features:

Common Pool	Covered Parking	Gym	Air Condition
Telephone Line	Solar panels for hot water	Double Glazing	Washing machine
Cooker	Extractor Fan	Parking	Refrigerator
Balcony	Furniture		

Description:

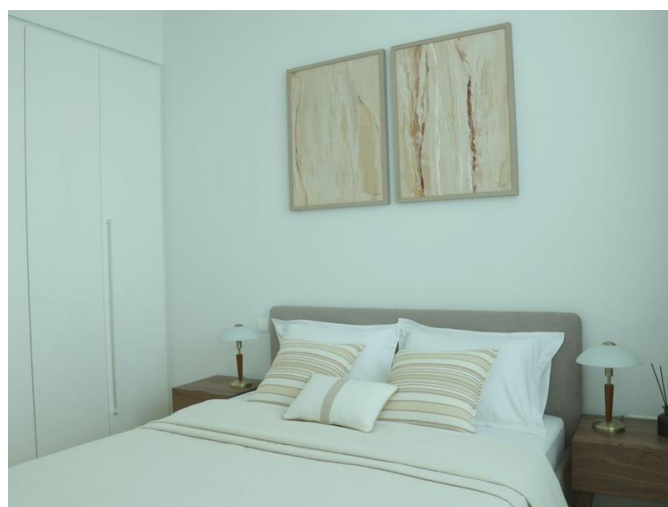
The rent price is 6500 euros per month, including common expenses + 2 security deposits against damages.

Utilities such as water, electricity, annual refuse collection and internet are payable extra by the Tenant.

Unique residential high-rise complex of 25 floors with hotel facilities developed with the world's latest architecture & planning trends in mind. Residents will enjoy unbelievable sea panoramas and the exceptional atmosphere of comfort and relaxation in the elegant gated community with exceptional indoor amenities like concierge, SPA, common outdoor pool, heated indoor pool, gym, tennis court, green area and underground parking. The complex blends ideally in the urban landscape of Limassol's sought after tourist area thanks to the well-balanced mix of sophistication, comfort and landmark design by a leading London architecture studio. Limassol's best sandy beaches, shops, restaurants and other holiday pleasures are in a stone's throw. The development comprises one-, two-, three- and four- bedroom luxurious apartments, penthouses and duplexes (sky houses) with private pools on the roof. Each unit has 3.15 m height ceilings and top quality finishings to astound the most demanding buyer. Most of the apartments offer breathtaking views of the Mediterranean sea, Limassol city and its picturesque hilly suburbs.

UNIQUE 2-BEDROOM APARTMENT IN SKYSCRAPER

€ 6 500 /month



UNIQUE 2-BEDROOM APARTMENT IN SKYSCRAPER

€ 6 500 /month



UNIQUE 2-BEDROOM APARTMENT IN SKYSCRAPER

€ 6 500 /month

