

**SPACIOUS 2 BEDROOM APARTMENT WITH
PRIVATE ENTRANCE IN PAPAS AREA**

1 000 €/month

Property Code:	912	Type:	Long-term rent - Apartment
Location:		Internal Area:	90 m ²
Bedrooms:	2	Bathrooms:	2
Renovation:	Renovated	Distance to the sea:	500 m
Distance to airport:	60 km	Covered verandas, 10 m²:	

Property features:

Air Condition	Parking - Uncovered	Telephone Line	Furnished
Solar panels for hot water	Double Glazing	Oven	Washing machine
Microwave	Cooker	Extractor Fan	Parking
Refrigerator	Furniture		

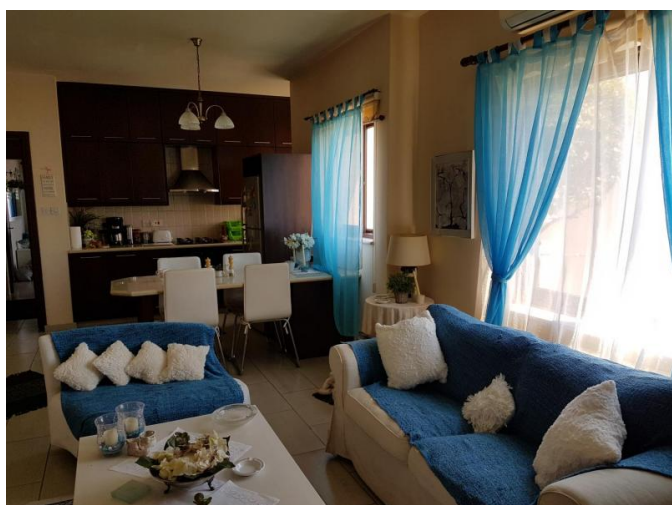
Description:

This spacious 2 double bedroom apartment is situated on the upper-half floor of the small, just 4 apartments, building and located in a very quiet residential area close to all amenities.

High-quality finishes feature the property: double glazed windows, A/C throughout, fully furnished and equipped with household equipment. The property has a separate entrance with a nice terrace.

SPACIOUS 2 BEDROOM APARTMENT WITH PRIVATE ENTRANCE IN PAPAS AREA

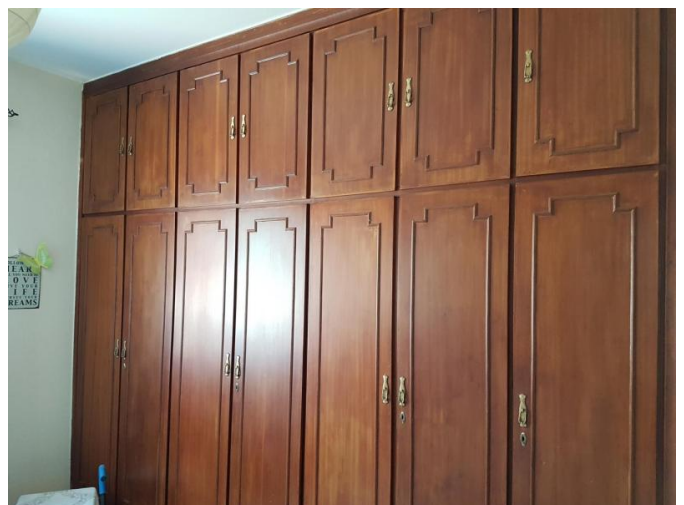
1 000 €/month



19.12.2025

SPACIOUS 2 BEDROOM APARTMENT WITH PRIVATE ENTRANCE IN PAPAS AREA

1 000 €/month



19.12.2025

SPACIOUS 2 BEDROOM APARTMENT WITH PRIVATE ENTRANCE IN PAPAS AREA

1 000 €/month



19.12.2025