

2 BEDROOM GROUND FLOOR DOUPLEX APARTMENT WITH A PRIVATE GARDEN IN A COMPLEX ON THE BEACH

560 000 €

Property Code:	6992	Type:	Sale - Apartment
Location:	Limassol - POTAMOS GERMASOGIA	Internal Area:	109 m ²
Bedrooms:	2	Bathrooms:	3
Renovation:	Modern	Distance to the sea:	20 m
Distance to airport:	60 km	Status:	Resale
VAT:	no	Uncovered verandas, m²:	12
Covered verandas, m²:	6		

Property features:

Air Conditioning	Common Pool	Furnished	Title Deeds
Parking - Covered	Double Glazing	Garden	Oven
Washing machine	Dish washer	Microwave	Cooker
Extractor Fan	Refrigerator	Balcony	

Description:

This luxurious and spacious sea front DOUPLEX 2 bedroom ground floor apartment of 109 sqm with private garden of 40 sqm offering privacy and tranquillity is situated in a stylish and contemporary, gated apartment complex with a direct access to the beach, communal swimming pool, gym. This wonderful condominium is perfectly situated in a prime location on a sandy beach in Limassol, close to the Dasoudi park, the city's largest and only seafront park. The property is reserved for those seeking elegance valuing spacious and privileged accommodation. The apartment is ideal for those with exceptional taste to life quality.

The apartment consists of spacious sitting/living area connected with a semi open kitchen, both areas leading to the private garden and guest wc on the ground floor. There're 2 double bedrooms with private showers on the upper floor. The master bedroom has a balcony of 5sqm offering beautiful landscape view.

The apartment is carefully decorated with modern furnishings in earthy tones and provides fully equipped kitchen with modern stainless steel appliances designed and installed by the world famous brand Miele® and climate control by Daikin®. Each apartment is equipped with international standard facilities such as free Wi-Fi internet access, satellite channels.

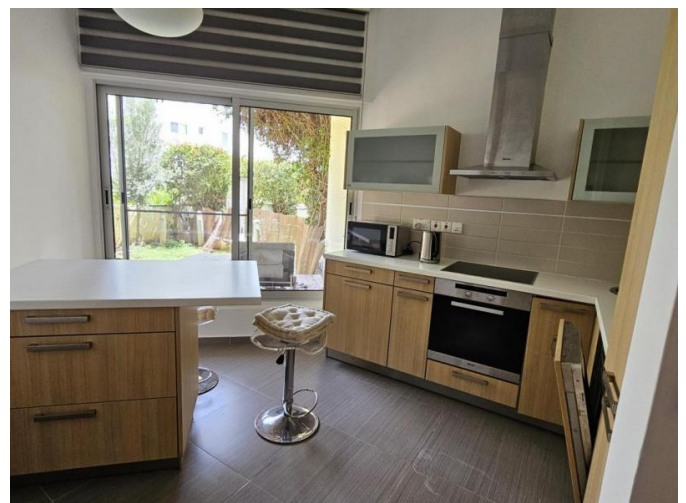
There's an underground parking allocated to this spectacular property.

Title dead is available.

Viewings are highly recommended.

**2 BEDROOM GROUND FLOOR DOUPLEX
APARTMENT WITH A PRIVATE GARDEN IN
A COMPLEX ON THE BEACH**

560 000 €



**2 BEDROOM GROUND FLOOR DOUPLEX
APARTMENT WITH A PRIVATE GARDEN IN
A COMPLEX ON THE BEACH**

560 000 €



**2 BEDROOM GROUND FLOOR DOUPLEX
APARTMENT WITH A PRIVATE GARDEN IN
A COMPLEX ON THE BEACH**

560 000 €



**2 BEDROOM GROUND FLOOR DOUPLEX
APARTMENT WITH A PRIVATE GARDEN IN
A COMPLEX ON THE BEACH**

560 000 €

