

## 2- BEDROOM MAISONETTE IN POTAMOS GERMASOGEIA AREA

2 200 €/month

<b>Property Code:</b>	7004	<b>Type:</b>	Long-term rent - Townhouse
<b>Location:</b>	Limassol - POTAMOS GERMASOGIA	<b>Internal Area:</b>	90 m <sup>2</sup>
<b>Bedrooms:</b>	2	<b>Bathrooms:</b>	2

### Property features:

Air Condition	Telephone Line	Solar panels for hot water	Double Glazing
Garden	Oven	Washing machine	Cooker
Extractor Fan	Refrigerator	Balcony	Furniture

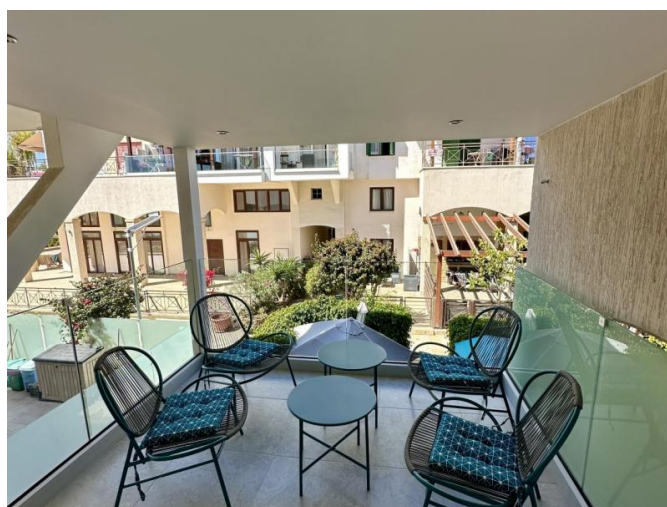
### Description:

A 2-bedroom maisonette is located on the first line in Potamos Germasogeia area, in a well-kept gated complex with a garden and direct access to the beach, next to the 4\* and 5\* hotels and close to all amenities. 2 Bedrooms (upper floor)/2 Bathrooms/ Open plan kitchen and living/dining (ground floor)/ Private garden/terrace/ Fully furnished and equipped with all necessary electrical appliances/ Sea view balcony/ Total area: 90 sq.m.

## 2- BEDROOM MAISONETTE IN POTAMOS GERMASOGEIA AREA

---

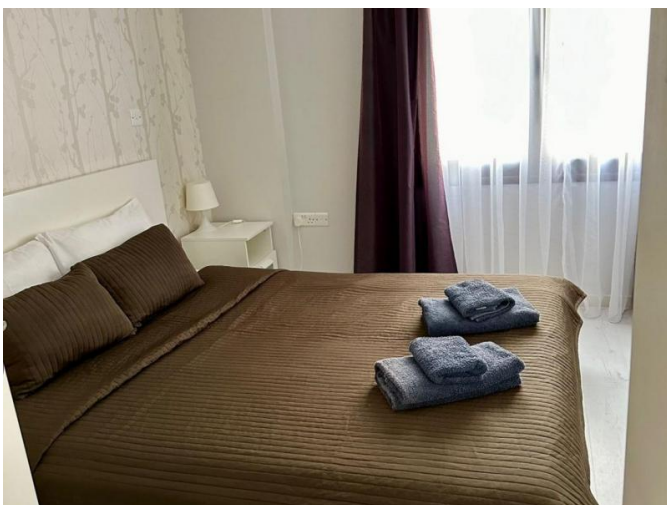
2 200 €/month



## 2- BEDROOM MAISONETTE IN POTAMOS GERMASOGEIA AREA

---

2 200 €/month



---

20.02.2026

## 2- BEDROOM MAISONETTE IN POTAMOS GERMASOGEIA AREA

---

2 200 €/month



---

20.02.2026