

## 4 BEDROOM MODERN HOUSE WITH EASY ACCESS TO THE HIGH WAY

700 000 €

|                       |                    |                             |                    |
|-----------------------|--------------------|-----------------------------|--------------------|
| <b>Property Code:</b> | 7110               | <b>Type:</b>                | Sale - House/Villa |
| <b>Location:</b>      | Limassol - YPSONAS | <b>Internal Area:</b>       | 180 m <sup>2</sup> |
| <b>Bedrooms:</b>      | 4                  | <b>Bathrooms:</b>           | 3                  |
| <b>Renovation:</b>    | Modern             | <b>Distance to airport:</b> | 50 km              |

### Property features:

|                 |                            |                   |           |
|-----------------|----------------------------|-------------------|-----------|
| Swimming Pool   | Air Condition              | Parking - Covered | Furnished |
| Fireplace       | Solar panels for hot water | Double Glazing    | Garden    |
| Washing machine | Cooker                     | Extractor Fan     | Parking   |
| Refrigerator    | Furniture                  |                   |           |

### Description:

Modern and very stylish 4 bedroom house in Ypsonas new residential area on the cul-de-sac road with an easy and smooth access to high way. Built in 2020 using the highest quality finishes.

Property consist of spacious living / lounge area, guest wc, semi-open comfortable kitchen leading to covered patio with built and nice arranged lounge/ BBQ area with a private swimming pool.

There're 4 bedrooms upstairs, walk—in shower room in a master bedroom and main family bathroom.

There's a fire place, Photovoltaic system, A/C throughout , double glazed and thermo isolated windows, stylish and high quality sanitary wears and equipmant.

Very queit neighbourhood, easy access to the high way, 10 min drive to Limassol center, upp to 15 min - to all International schools

## 4 BEDROOM MODERN HOUSE WITH EASY ACCESS TO THE HIGH WAY

---

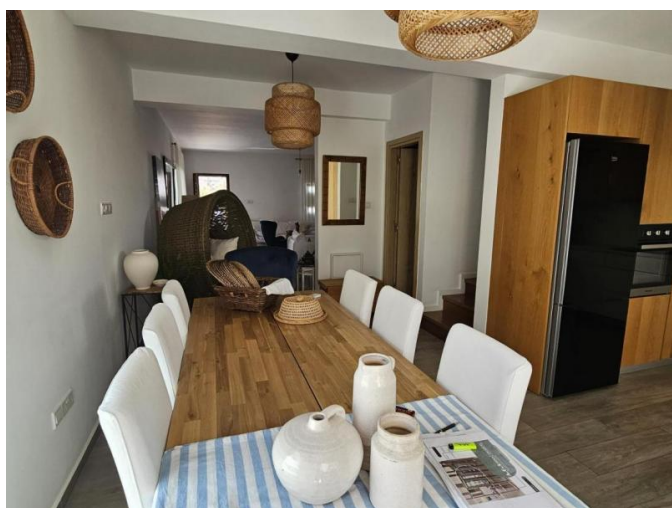
700 000 €



## 4 BEDROOM MODERN HOUSE WITH EASY ACCESS TO THE HIGH WAY

---

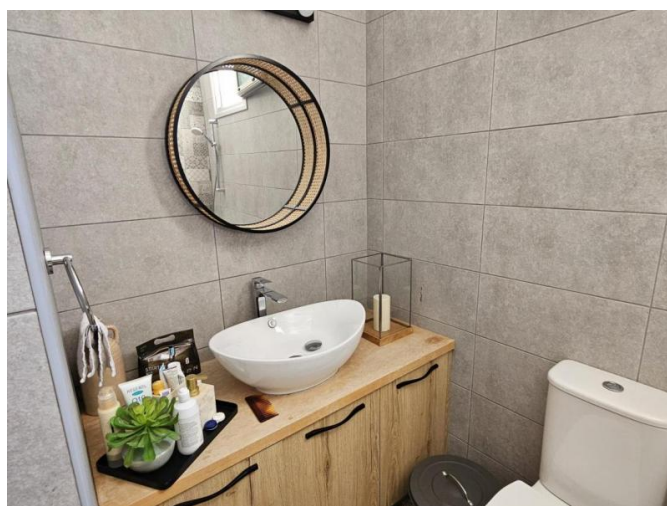
700 000 €



## 4 BEDROOM MODERN HOUSE WITH EASY ACCESS TO THE HIGH WAY

---

700 000 €



## 4 BEDROOM MODERN HOUSE WITH EASY ACCESS TO THE HIGH WAY

---

700 000 €

