

# ELEGANT 2-BEDROOM SEAFRONT APARTMENT WITH PANORAMIC VIEWS

€ 5 900 /month

|   |                                  |                                 |                               |
|---|----------------------------------|---------------------------------|-------------------------------|
| <b>Property Code:</b>                       | 7131                             | <b>Type:</b>                    | Long-term rent -<br>Apartment |
| <b>Location:</b>                            | Limassol - POTAMOS<br>GERMASOGIA | <b>Internal Area:</b>           | 101 m <sup>2</sup>            |
| <b>Bedrooms:</b>                            | 2                                | <b>Bathrooms:</b>               | 3                             |
| <b>Energy class:</b>                        | A                                | <b>Distance to<br/>airport:</b> | 65 km                         |
| <b>Covered verandas,<br/>m<sup>2</sup>:</b> | 36                               |                                 |                               |

## Property features:

|                               |                 |                               |                |
|-------------------------------|-----------------|-------------------------------|----------------|
| Air Conditioning              | Communal Pool   | Elevator                      | Furnished      |
| Gym                           | Sea View        | Swimming Pool                 | Telephone Line |
| VRV central ceiling<br>system | Private Pool    | Solar panels for hot<br>water | Double Glazing |
| Oven                          | Washing machine | Dish washer                   | Cooker         |
| Parking                       | Refrigerator    | Balcony                       |                |

## Description:

Step into refined coastal living with this luxurious 2-bedroom apartment offering breathtaking, unobstructed views of the Mediterranean. Boasting 101 m<sup>2</sup> of internal space and 36 m<sup>2</sup> of covered verandas, this residence combines modern design with superior comfort.

## Property Features:

Bright open-plan living and dining area with floor-to-ceiling glass for maximum light and sea views

Sleek, fully fitted kitchen with top-tier appliances and elegant finishes

Two spacious bedrooms, including a master with en-suite bathroom

High-quality interiors and stylish designer furnishings

Expansive verandas ideal for lounging or hosting, with seamless indoor-outdoor flow

Smart home system, underfloor heating, and VRV climate control for year-round comfort

## Resident Amenities:

24/7 security and concierge

Indoor and outdoor pools, including a stunning infinity pool

## ELEGANT 2-BEDROOM SEAFRONT APARTMENT WITH PANORAMIC VIEWS

---

€ 5 900 /month

State-of-the-art gym and luxury spa

Landscaped communal areas and private zones for residents

Underground parking and dedicated storage space

Access to a curated collection of boutiques, cafés, and fine dining options

Direct beach promenade access and close proximity to city attractions

**Terms:**

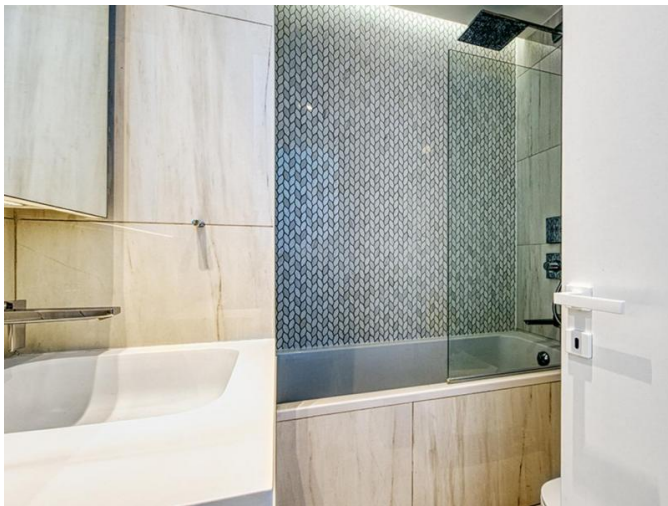
Two deposits required. Communal expenses not included.



# ELEGANT 2-BEDROOM SEAFRONT APARTMENT WITH PANORAMIC VIEWS

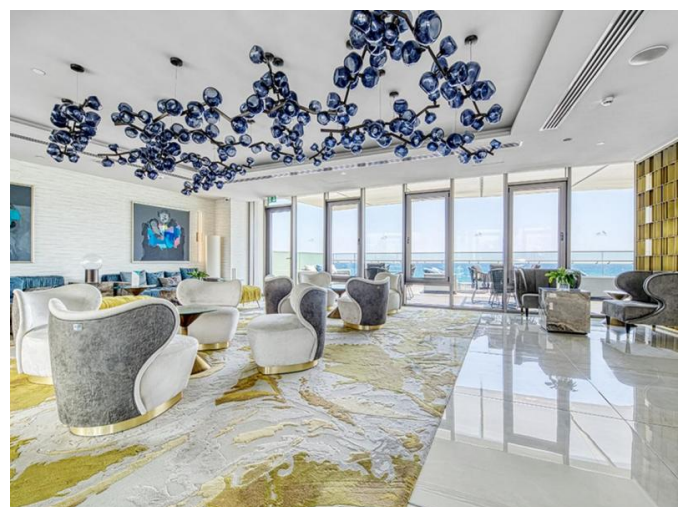
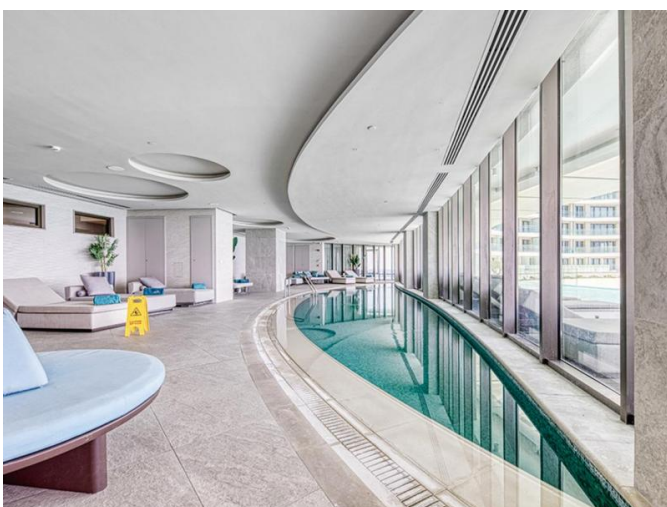
---

€ 5 900 /month



# ELEGANT 2-BEDROOM SEAFRONT APARTMENT WITH PANORAMIC VIEWS

€ 5 900 /month



# ELEGANT 2-BEDROOM SEAFRONT APARTMENT WITH PANORAMIC VIEWS

---

€ 5 900 /month

