

ELEGANT 2-BEDROOM SEAFRONT APARTMENT WITH PANORAMIC VIEWS

5 900 €/month

Property Code:	7159	Type:	Long-term rent - Apartment
Location:	Limassol - MOUTAGIAKA	Internal Area:	101 m ²
Bedrooms:	2	Bathrooms:	3
Heating:	Underfloor heating	Energy class:	A
Year of construction:	2017	Distance to the sea:	100 m
Distance to airport:	65 km	Covered verandas, m²:	36

Property features:

Air Conditioning	Common Pool	Communal Pool	Elevator
Furnished	SPA	Storage	Swimming Pool
Under Floor Heating	Heating	Air Condition	Parking - Covered
Telephone Line	Furnished	VRV central ceiling system	Solar panels for hot water
Double Glazing	Oven	Washing machine	Dish washer
Microwave	Cooker	Extractor Fan	Parking
Refrigerator	Balcony	Furniture	

Description:

This exquisite two-bedroom residence, situated on the 7th floor in Potamos Germasogeias, offers a rare opportunity to enjoy the very best of Limassol's seafloor living. With 101 m² of elegantly designed interiors and 36 m² of spacious covered verandas, the apartment combines refined style, comfort, and panoramic Mediterranean views.

The open-plan living and dining area is framed by floor-to-ceiling windows that flood the home with natural light and open directly to uninterrupted sea vistas. A modern kitchen with top-quality appliances and premium finishes complements the space, making it both practical and sophisticated. The master bedroom features its own en-suite bathroom, while a second generously sized bedroom and additional WCs provide comfort and convenience. Furnishings by Gianfranco Ferré Home, together with underfloor heating, VRV air conditioning, and smart home systems, ensure a lifestyle defined by elegance and ease.

Residents benefit from unmatched facilities, including 24-hour concierge and security, indoor and outdoor swimming pools with a striking infinity pool overlooking the sea, a luxury spa and fitness center, landscaped gardens, and direct access to the seafloor promenade. A curated selection of boutique shops, cafés, and fine dining options are within immediate reach. Secure underground parking and private storage complete the offering.

Available at €5,900 per month, with two deposits required and common expenses extra, this property is ideal for those seeking refined living in one of Limassol's most prestigious addresses!

11.04.2026

**ELEGANT 2-BEDROOM SEAFRONT
APARTMENT WITH PANORAMIC VIEWS**

5 900 €/month



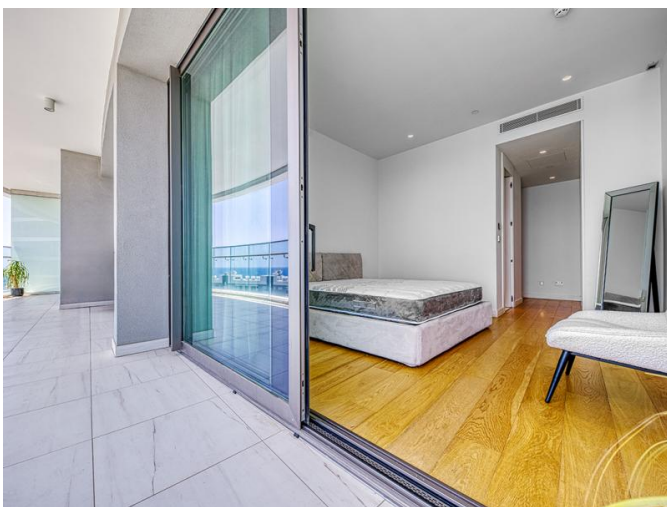
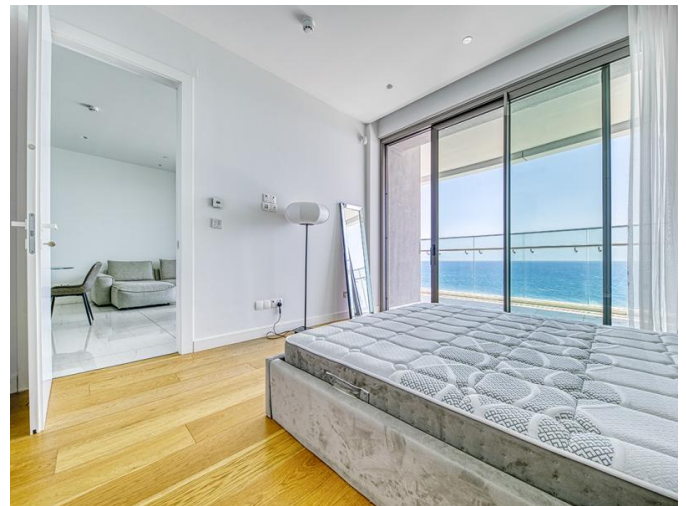
ELEGANT 2-BEDROOM SEAFRONT APARTMENT WITH PANORAMIC VIEWS

5 900 €/month



ELEGANT 2-BEDROOM SEAFRONT APARTMENT WITH PANORAMIC VIEWS

5 900 €/month



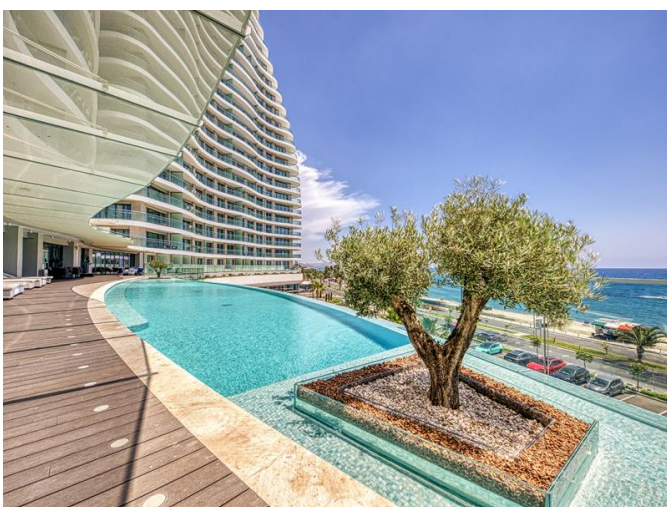
ELEGANT 2-BEDROOM SEAFRONT APARTMENT WITH PANORAMIC VIEWS

5 900 €/month



**ELEGANT 2-BEDROOM SEAFRONT
APARTMENT WITH PANORAMIC VIEWS**

5 900 €/month



ELEGANT 2-BEDROOM SEAFRONT APARTMENT WITH PANORAMIC VIEWS

5 900 €/month

