

**PRESTIGIOUS SEAFRONT TWO-BEDROOM  
APARTMENT WITH PANORAMIC VIEWS  
AND RESORT AMENITIES**

€ 1 800 000

<b>Property Code:</b>	7200	<b>Type:</b>	Sale - Apartment
<b>Location:</b>	Limassol - Pyrgos Tourist Area	<b>Internal Area:</b>	120 m <sup>2</sup>
<b>Bedrooms:</b>	2	<b>Bathrooms:</b>	2
<b>Renovation:</b>	Modern	<b>Number of floors:</b>	14
<b>Energy class:</b>	A	<b>Distance to the sea:</b>	100 m
<b>Distance to airport:</b>	54 km	<b>VAT:</b>	No VAT

**Property features:**

Air Conditioning	Common Pool	Communal Pool	Covered Parking
Elevator	Furnished	Gym	Sauna
Sea View	SPA	Storage	Title Deeds
Air Condition	Parking - Covered	Telephone Line	Alarm
VRV central ceiling system	Solar panels for hot water	Double Glazing	Oven
Washing machine	Dish washer	Cooker	Extractor Fan
Parking	Refrigerator	Balcony	Furniture

**Description:**

This exceptional two-bedroom apartment offers the ultimate in luxury beachfront living in the prestigious Pyrgos tourist area of Limassol. Situated within an iconic 14-story tower at the eastern entrance of the city, it combines elegant design, premium finishes, and panoramic sea views that capture the essence of Mediterranean sophistication.

Spanning 120 m<sup>2</sup>, this residence features two spacious bedrooms, two bathrooms, and an open-plan living area that flows seamlessly onto a private balcony overlooking the sea and marina. Every detail has been crafted to the highest standard, from the high-quality kitchen cabinets and sanitary ware to the double-glazed thermal aluminium windows and VRV air-conditioning system.

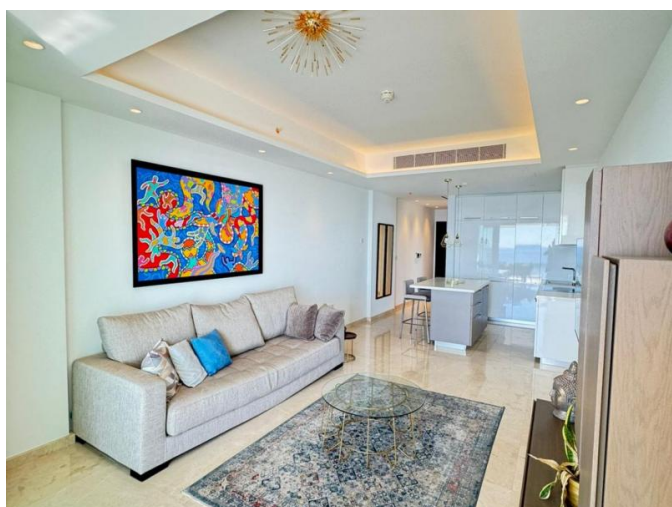
Residents enjoy access to a wealth of world-class amenities, including an infinity pool and sunbathing area on the roof garden terrace, a fully equipped gym, a luxury bar, a spa, and a sauna. The property forms part of an exclusive beachfront community connected to a five-star resort, granting residents hotel membership privileges, professional management, concierge service, room service, and access to 43,000 m<sup>2</sup> of landscaped gardens and a private marina suitable for yacht entry.

Located just 15 minutes from Limassol's dynamic city centre, the apartment offers a rare combination of serenity, convenience, and prestige. Secure covered parking, gated access, and title deeds further enhance the value and peace of mind this property provides.

**PRESTIGIOUS SEAFRONT TWO-BEDROOM  
APARTMENT WITH PANORAMIC VIEWS  
AND RESORT AMENITIES**

---

€ 1 800 000



**PRESTIGIOUS SEAFRONT TWO-BEDROOM  
APARTMENT WITH PANORAMIC VIEWS  
AND RESORT AMENITIES**

---

€ 1 800 000

