

## 3 BEDROOM PENTHOUSE IN SMALL BUILDING WITH EASY ACCESS TO HIGH WAY

2 000 €/month

<b>Property Code:</b>	7264	<b>Type:</b>	Long-term rent - Apartment
<b>Location:</b>	Limassol - KATO POLEMIDIA	<b>Internal Area:</b>	160 m <sup>2</sup>
<b>Bedrooms:</b>	3	<b>Bathrooms:</b>	2
<b>Renovation:</b>	Renovated	<b>Floor:</b>	3
<b>Number of floors:</b>	3	<b>Year of construction:</b>	2015
<b>Distance to airport:</b>	50 km	<b>Covered verandas, m<sup>2</sup>:</b>	40

### Property features:

Shutters	Air Condition	Furnished	Store Room
Solar panels for hot water	Double Glazing	Maids Room	Washing machine
Dish washer	Microwave	Cooker	Refrigerator
Balcony	Furniture		

### Description:

Very spacious 3 bedroom penthouse located in Kato Polemidia within smooth and easy access to all major infrastructure.

Apartment is situated on the 3<sup>rd</sup> floor of small and very well maintained building with 5 apartments only and consists of very spacious living/sitting area with wood burned fire place leading to huge verandas with built in BBQ area and offering marvellous panoramic views to surroundings. There're 3 double bedrooms, 2 bathrooms, separate very spacious kitchen equipped with highest quality appliances and furniture. There're double glazed windows , A/C throughout, Solar system for Hot water preparation. Very spacious storage room and covered parking place are allocated as well.

Very quiet neighbourhood, nice maintained surroundings.

The rent is 2000 eur/ month , 2 deposits will be requested.

## 3 BEDROOM PENTHOUSE IN SMALL BUILDING WITH EASY ACCESS TO HIGH WAY

---

2 000 €/month



---

09.02.2026



## 3 BEDROOM PENTHOUSE IN SMALL BUILDING WITH EASY ACCESS TO HIGH WAY

---

2 000 €/month



---

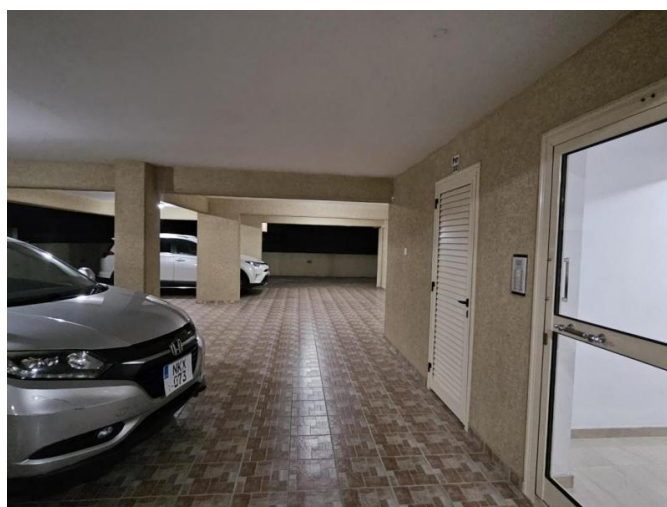
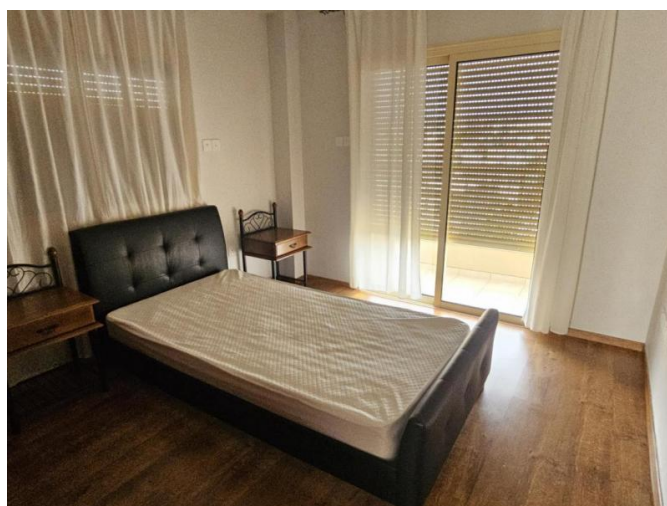
09.02.2026



## 3 BEDROOM PENTHOUSE IN SMALL BUILDING WITH EASY ACCESS TO HIGH WAY

---

2 000 €/month



---

09.02.2026

## 3 BEDROOM PENTHOUSE IN SMALL BUILDING WITH EASY ACCESS TO HIGH WAY

---

2 000 €/month



---

09.02.2026