

Property Code:	A10023	Type:	Sale - Apartment
Location:	Larnaca - Livadia	Internal Area:	78 m ²
Bedrooms:	2	Bathrooms:	2
Year of construction:	2027	Status:	Under Construction
VAT:	+ VAT		

Property features:

Covered Parking	Elevator	Roof Garden	Storage
Top Floor Apartment (Penthouse)			

Description:

Modern 2-Bedroom Penthouse in Livadia, Larnaca - Near “Land of Tomorrow”

This bright and spacious **2-bedroom penthouse** is located on the **3rd floor** of a **low-density residential block (only 8 units)**, offering privacy and a peaceful living environment.

Property Features:

- ☐ **Covered area:** 78 m²
- ☐ **Covered veranda:** 18 m² (perfect for year-round relaxation)
- ☐ **Covered parking & storage room** included
- ☐ **Elevator access** for added convenience

Prime Location:

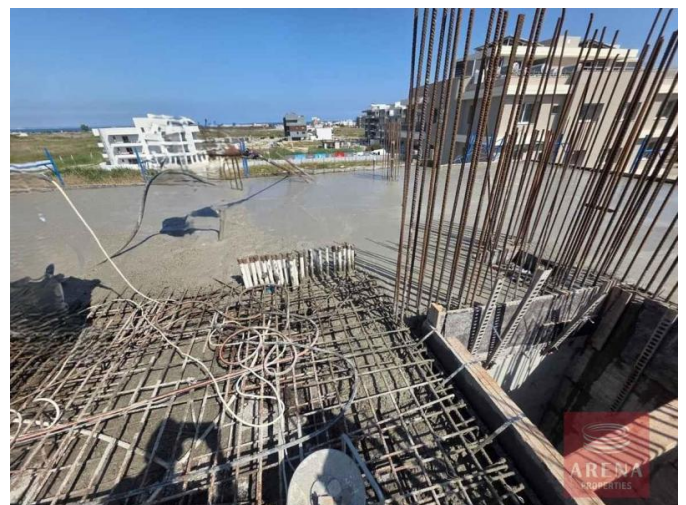
Just **1 km from the sea** - easy access to beaches & coastal walks
21 km from Larnaca International Airport (quick commute)
Next to **“Land of Tomorrow”** - a vibrant area with future development potential

This well-maintained apartment is an excellent opportunity for a **permanent residence, holiday home, or investment**. Don't miss out - schedule a viewing today!

PENTHOUSE NEAR "LAND OF TOMORROW"

€ 320 000

€ ~~335 000~~



PENTHOUSE NEAR "LAND OF TOMORROW"

€ 320 000

~~€ 335 000~~

