

125 SQ M GROUND FLOOR FURNISHED OFFICE ON A MAIN ROAD FOR RENT CLOSE TO THE CENTRE

1 300 €/month

Property Code:	1190	Type:	Long-term rent - Office
Location:	Limassol - PETROU AND PAVLOU	Internal Area:	125 m ²
Renovation:	Design	Floor:	0
Number of floors:	2		

Property features:

Air Condition	Parking - Uncovered	Telephone Line	Alarm
Furnished	Store Room	Solar panels for hot water	Double Glazing
Parking	Refrigerator		

Description:

The office has a ground floor area of 75 sq m which consists of a reception area, one open office, one conference room, server room, WC and kitchenette. At the upper level, there is a WC, an open office and the director's office. The office is for rent fully furnished and equipped. It is located on the main road on the ground floor and has parking in front and nearby.

**125 SQ M GROUND FLOOR FURNISHED
OFFICE ON A MAIN ROAD FOR RENT CLOSE
TO THE CENTRE**

1 300 €/month



15.12.2025

**125 SQ M GROUND FLOOR FURNISHED
OFFICE ON A MAIN ROAD FOR RENT CLOSE
TO THE CENTRE**

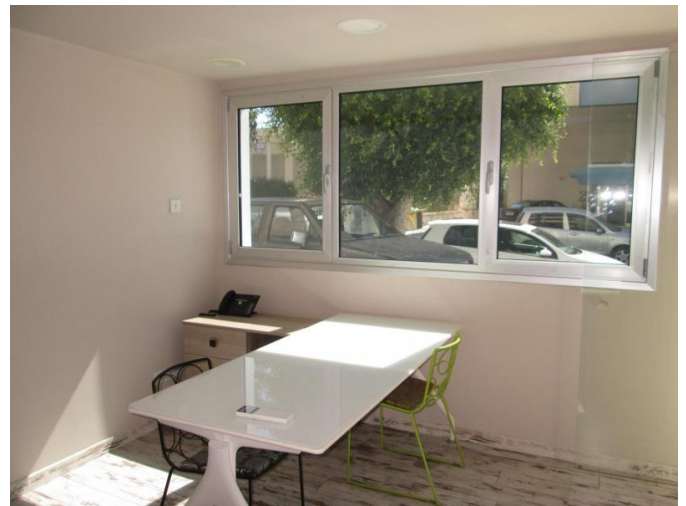
1 300 €/month



15.12.2025

**125 SQ M GROUND FLOOR FURNISHED
OFFICE ON A MAIN ROAD FOR RENT CLOSE
TO THE CENTRE**

1 300 €/month



15.12.2025