
Property Code:	A10582	Type:	Long-term rent - Apartment
Location:	Larnaca - Livadia	Internal Area:	83 m ²
Bedrooms:	2	Bathrooms:	2
VAT:	Monthly		

Property features:

Air Conditioning	Elevator	Furnished	Roof Garden
------------------	----------	-----------	-------------

Top Floor Apartment (Penthouse)

Description:

For Rent | Brand-New Penthouse with Panoramic Sea & Mountain Views - New Livadia

A spectacular brand-new penthouse apartment, located in New Livadia, within a secure, gated residential project, offering breathtaking panoramic views of the sea and the mountains.

Property Highlights:

- 2 bedrooms, including a master bedroom with en-suite bathroom
- 83 sqm internal area
- 30 sqm main balcony
- 40 sqm stunning rooftop terrace
- Additional 10 sqm service balcony
- Fully furnished and fully equipped
- High-quality finishes and modern design
- Elevator in the building
- Private uncovered parking

Prime Location:

- Schools, kindergardens, supermarket, pharmacy & daily services within 400 meters
- Only 7 minutes' drive to Larnaca city center

Condition:

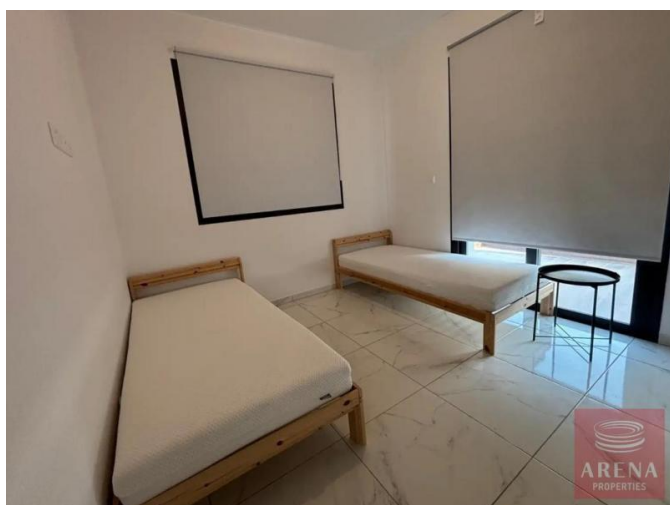
- Brand new - never lived in
- Located in a closed, community-style project

An exceptional opportunity for families, expats, professionals or couples seeking a luxury penthouse lifestyle in a quiet, high-quality residential area, just minutes from Larnaca.

Contact for further details or to arrange a private viewing.

**PENTHOUSE WITH PANORAMIC SEA &
MOUNTAIN VIEWS**

€ 1 650 /month



PENTHOUSE WITH PANORAMIC SEA & MOUNTAIN VIEWS

€ 1 650 /month

