

2 BEDROOMS PENTHOUSE IN LIVADIA TOURIST AREA

€ 409 500

Property Code:	A11166	Type:	Sale - Apartment
Location:	Larnaca - Livadia Tourist Area	Internal Area:	86 m ²
Bedrooms:	2	Bathrooms:	2
Year of construction:	2028	Status:	Off Plan
VAT:	+ VAT		

Property features:

Communal Pool	Covered Parking	Elevator	Garden
Gym	Kid's Play Area	Roof Garden	Storage
Top Floor Apartment (Penthouse)			

Description:

Modern 2 Bedrooms penthouse for sale in Livadia Tourist Area

This modern apartment is located in Livadia, within a well-designed residential complex consisting of 5 buildings and a total of 46 apartments, offering a sense of community along with privacy and comfort.

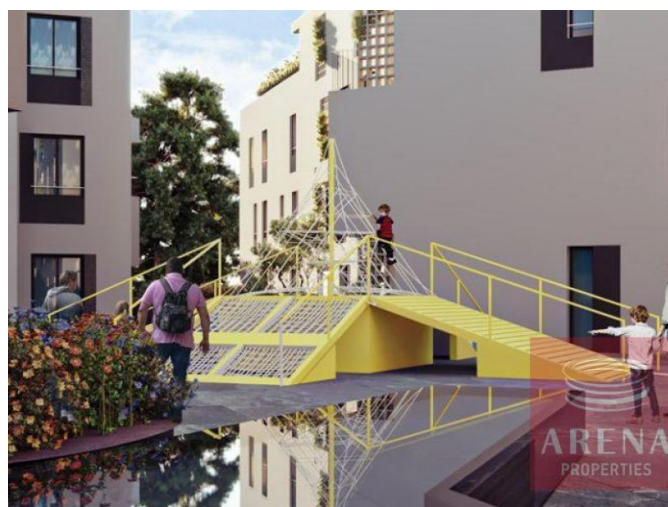
Residents can enjoy a range of excellent communal facilities, including a swimming pool, fully equipped indoor gym, children's playground, and beautifully landscaped gardens with green areas – ideal for families and relaxation.

The property is conveniently situated just 2 km from the sea and only 12 km from Larnaca International Airport, providing easy access for both daily living and travel. In addition, it is close to all essential amenities such as shops, supermarkets, schools, and services.

An ideal choice for both residence and investment in a growing and desirable area.

**2 BEDROOMS PENTHOUSE IN LIVADIA
TOURIST AREA**

€ 409 500



**2 BEDROOMS PENTHOUSE IN LIVADIA
TOURIST AREA**

€ 409 500

