

# BRAND-NEW PREMIUM 2-BEDROOM APARTMENT IN A LUXURY BEACHFRONT TOWER

€ 6 500 /month

<b>Property Code:</b>	11397	<b>Type:</b>	Long-term rent - Apartment
<b>Location:</b>	Limassol - POTAMOS GERMASOGIA	<b>Internal Area:</b>	151 m <sup>2</sup>
<b>Bedrooms:</b>	2	<b>Bathrooms:</b>	3
<b>Renovation:</b>	Modern	<b>Floor:</b>	8
<b>Heating:</b>	Underfloor heating	<b>Distance to airport:</b>	65 km

## Property features:

Communal Pool	Covered Parking	Elevator	Furnished
Gym	Sauna	SPA	Swimming Pool
Under Floor Heating	Telephone Line	VRV central ceiling system	Double Glazing
Washing machine	Dish washer	Cooker	Parking
Refrigerator	Balcony		

## Description:

An exceptional brand-new 2-bedroom apartment located on the 8th floor of a prestigious luxury beachfront tower, offering refined living, impressive sea views, and access to exclusive resident-only facilities.

The apartment offers 151 sq.m. of covered area and features a spacious, elegant living area with panoramic sea views, a large sea-view veranda, and an additional private veranda connected to the bedroom. The property is fully furnished and fully equipped to a high standard, combining comfort, modern design, and premium finishes throughout.

The layout includes 2 well-sized bedrooms and 3 bathrooms, including a guest WC, a shower, and a bathtub. The apartment is fitted with a Smart Home system, underfloor heating, and VRV air conditioning, ensuring year-round comfort and convenience.

Additional benefits include underground parking and a private storage room.

Residents enjoy access to exclusive premium facilities, including reception and concierge service, 24/7 security and CCTV, spa and massage room, indoor swimming pool, gym, saunas, relaxation areas, hammam, and a panoramic outdoor swimming pool.

A rare opportunity to rent a brand-new premium apartment in one of the most luxurious residential towers by the sea.

Terms: 2 deposits

Common expenses are included in the price

**BRAND-NEW PREMIUM 2-BEDROOM  
APARTMENT IN A LUXURY BEACHFRONT  
TOWER**

---

€ 6 500 /month



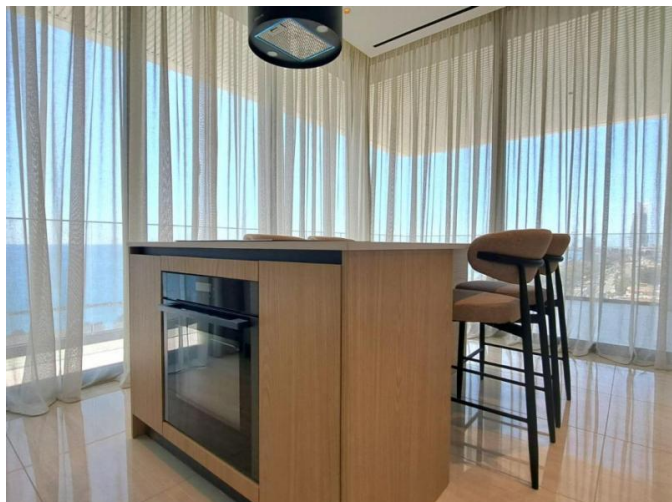
---

01.06.2026

**BRAND-NEW PREMIUM 2-BEDROOM  
APARTMENT IN A LUXURY BEACHFRONT  
TOWER**

---

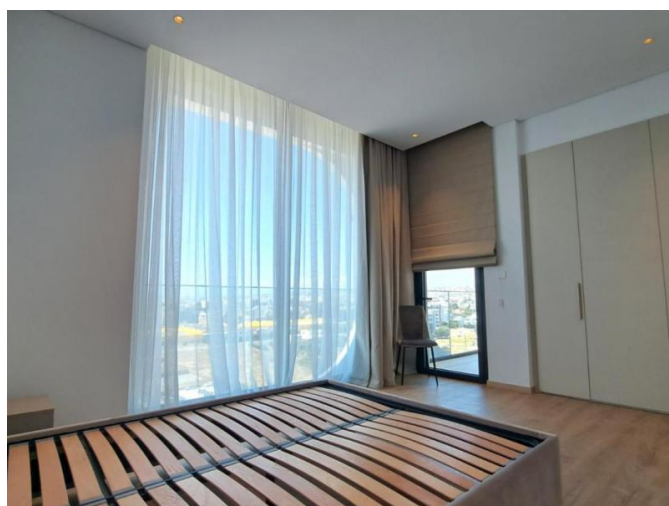
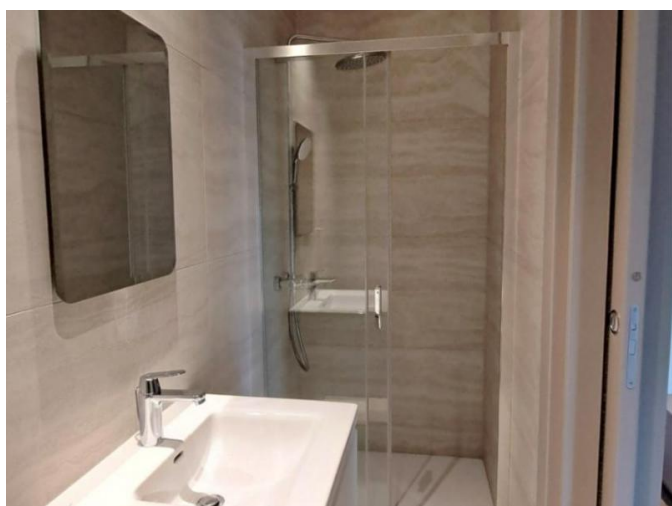
€ 6 500 /month



**BRAND-NEW PREMIUM 2-BEDROOM  
APARTMENT IN A LUXURY BEACHFRONT  
TOWER**

---

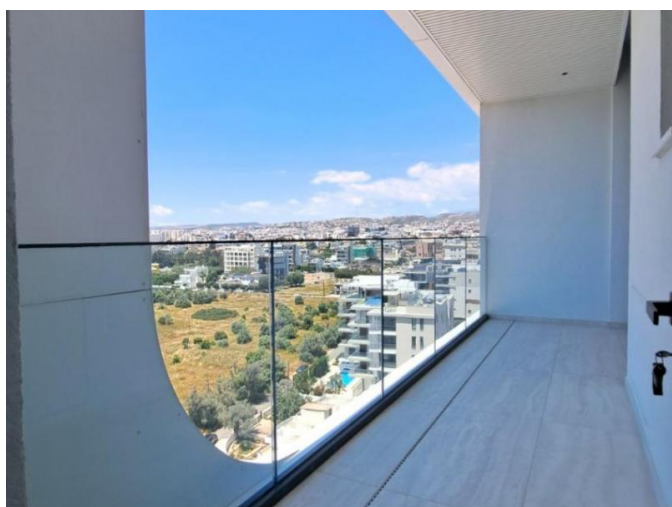
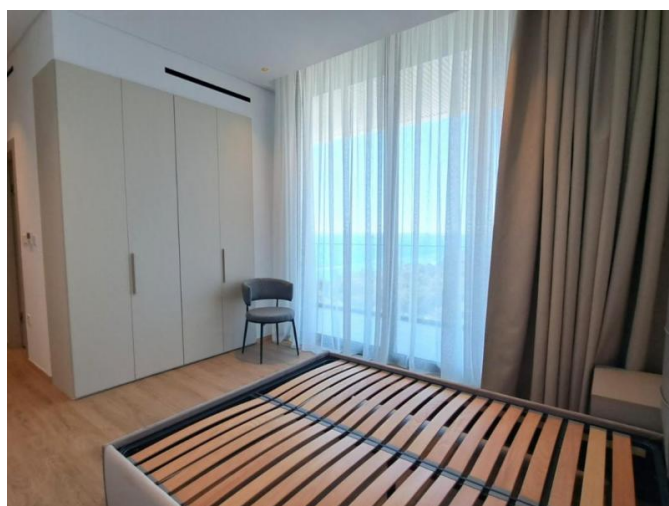
€ 6 500 /month



**BRAND-NEW PREMIUM 2-BEDROOM  
APARTMENT IN A LUXURY BEACHFRONT  
TOWER**

---

€ 6 500 /month



**BRAND-NEW PREMIUM 2-BEDROOM  
APARTMENT IN A LUXURY BEACHFRONT  
TOWER**

---

€ 6 500 /month

