

A MODERN DELUXE ONE BEDROOM APARTMENT JUST 300 M AWAY FROM THE SEA

290 000 €

Property Code:	1270	Type:	Sale - Apartment
Location:	Limassol - POTAMOS GERMASOGIA	Internal Area:	50 m ²
Bedrooms:	1	Bathrooms:	1
Floor:	3	Number of floors:	4
Energy class:	B	Year of construction:	2019
Distance to the sea:	300 m	Distance to airport:	60 km
Status:	New	VAT:	PLUS VAT
Uncovered verandas, m²:	5	Covered verandas, m²:	12

Property features:

Common Pool	Air Condition	Telephone Line	Store Room
Solar panels for hot water	Double Glazing	Parking	Balcony

Description:

A modern de-luxe class apartment complex consisting of only 17 apartments is located in the most attractive area of Limassol - Potamos Germasoyia, 300 m away from the sea with a sandy beach and the eucalyptus park 'Dasudi'. Quiet atmosphere of the neighborhood is combined with the proximity to the entire urban infrastructure, which provides excellent conditions for resting and as well as for comfortable family stay. It's important that the rent price of an apartment in this area is higher than in other areas. This fact automatically turns those units into a successful investment that provides a guaranteed income.

The best area of Limassol

300 m to the sandy beach and the Dasudi park City's entire infrastructure is just few Footsteps away

Fenced area with the entrance under surveillance

Each apartment has a storage room on the ground floor High ceilings

Fitted wardrobes in the bedrooms Modern kitchen

Fully equipped bathrooms

THE 1 BEDROOM APARTMENT IS LOCATED ON THE 3RD FLOOR WITH TOTAL COVERED AREA OF 73.34 M2

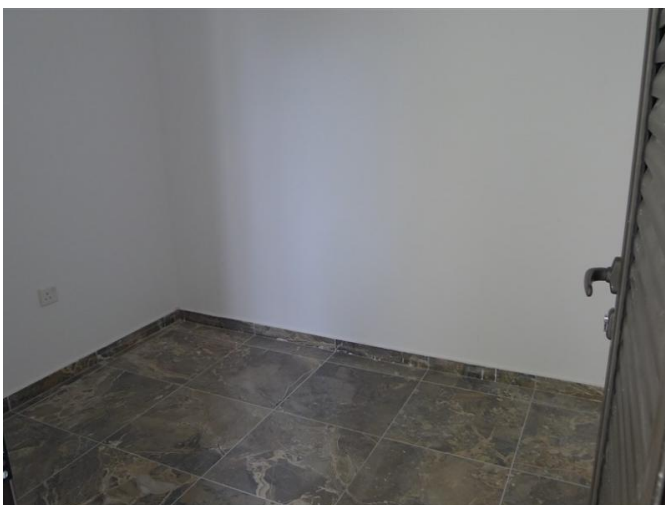
**A MODERN DELUXE ONE BEDROOM
APARTMENT JUST 300 M AWAY FROM THE
SEA**

290 000 €



**A MODERN DELUXE ONE BEDROOM
APARTMENT JUST 300 M AWAY FROM THE
SEA**

290 000 €



**A MODERN DELUXE ONE BEDROOM
APARTMENT JUST 300 M AWAY FROM THE
SEA**

290 000 €



22.12.2025