

MODERN 2-BEDROOM APARTMENT IN A PRIME CENTRAL LIMASSOL LOCATION

€ 475 000

Property Code:	11423	Type:	Sale - Apartment
Location:	Limassol - MESA GEITONIA	Internal Area:	86 m ²
Bedrooms:	2	Bathrooms:	2
Renovation:	Modern	Floor:	1
Number of floors:	5	Distance to airport:	65 km
Status:	New	VAT:	+ 19% VAT
Covered verandas, m²:	23.3		

Property features:

1st Floor Apartment	Covered Parking	Elevator	Gym
Kid's Play Area	Swimming Pool	Unfurnished	Telephone Line
Solar panels for hot water	Double Glazing	Washing machine	Balcony

Description:

An excellent opportunity to acquire a modern 2-bedroom apartment within a well-designed residential development in one of Limassol's most convenient and established urban areas.

The residence offers a practical layout, comfortable living spaces, and easy access to everyday amenities, business areas, schools, shops, and main road connections.

Sold unfurnished. The photos shown are from a furnished presentation apartment and are intended for illustrative purposes only; furniture is not included in the sale price.

The apartment is offered at €475,000 + 19% VAT.

Title deeds are available, providing additional confidence and security for the buyer.

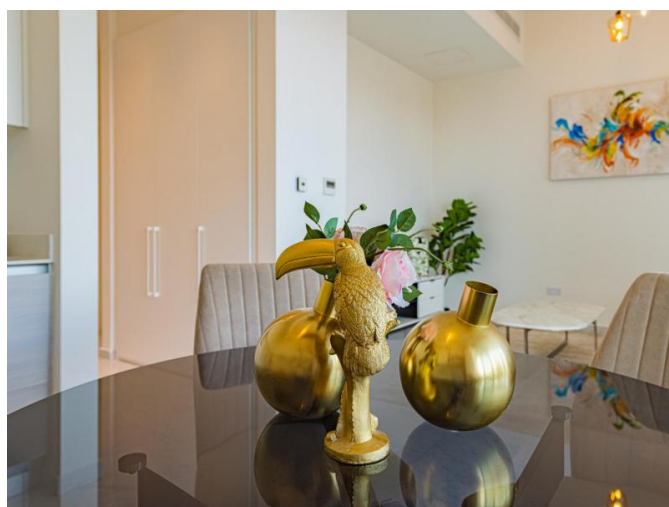
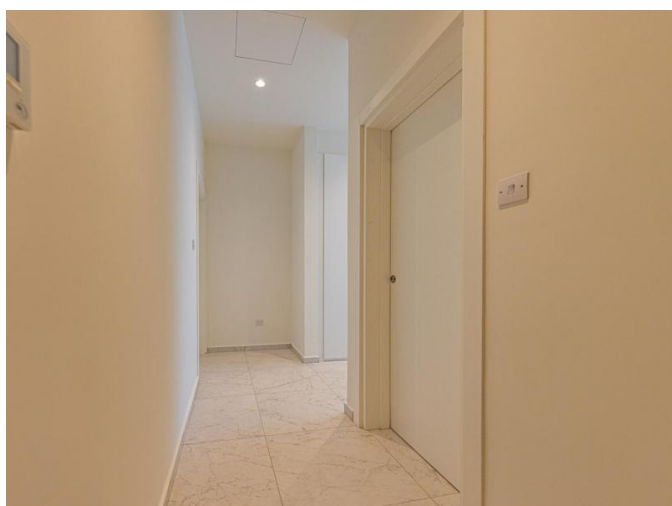
**MODERN 2-BEDROOM APARTMENT IN A
PRIME CENTRAL LIMASSOL LOCATION**

€ 475 000



MODERN 2-BEDROOM APARTMENT IN A PRIME CENTRAL LIMASSOL LOCATION

€ 475 000



MODERN 2-BEDROOM APARTMENT IN A PRIME CENTRAL LIMASSOL LOCATION

€ 475 000



MODERN 2-BEDROOM APARTMENT IN A PRIME CENTRAL LIMASSOL LOCATION

€ 475 000



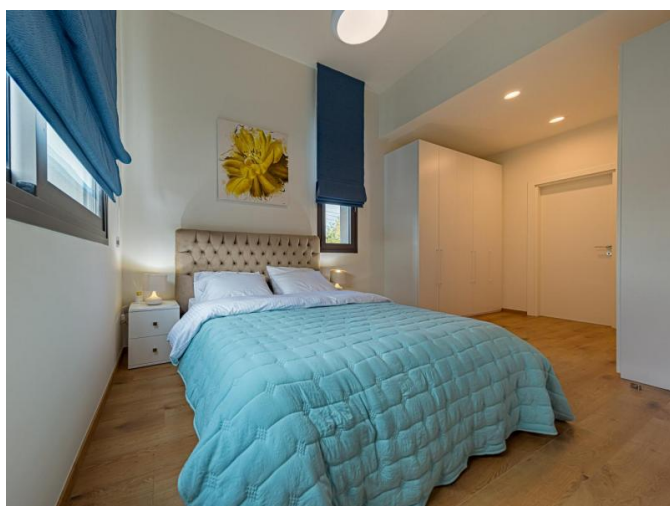
MODERN 2-BEDROOM APARTMENT IN A PRIME CENTRAL LIMASSOL LOCATION

€ 475 000



**MODERN 2-BEDROOM APARTMENT IN A
PRIME CENTRAL LIMASSOL LOCATION**

€ 475 000



MODERN 2-BEDROOM APARTMENT IN A PRIME CENTRAL LIMASSOL LOCATION

€ 475 000

