

# BRAND NEW 3 BEDROOM PENTHOUSE WITH ROOF GARDEN AND PANORAMIC VIEWS

€ 5 500 /month

<b>Property Code:</b>	11429	<b>Type:</b>	Long-term rent - Apartment
<b>Location:</b>	Limassol - PANTHEA	<b>Internal Area:</b>	122 m <sup>2</sup>
<b>Bedrooms:</b>	3	<b>Bathrooms:</b>	3
<b>Renovation:</b>	Modern	<b>Floor:</b>	4
<b>Number of floors:</b>	4	<b>Heating:</b>	Underfloor heating
<b>Energy class:</b>	A	<b>Year of construction:</b>	2025
<b>Distance to airport:</b>	60 km	<b>Uncovered verandas, m<sup>2</sup>:</b>	82
<b>Covered verandas, m<sup>2</sup>:</b>	34		

## Property features:

Covered Parking	Gym	Penthouse	Roof Garden
Sea View	Shutters	Storage	Swimming Pool
Top Floor Apartment (Penthouse)	Air Condition	Furnished	Store Room
Solar panels for hot water	Double Glazing	Garden	Dish washer
Cooker	Extractor Fan	Refrigerator	Balcony

## Description:

This luxury brand new 3 bedrooms Penthouse is located in the prestigious Panthea area, on the hill from where it enjoys panoramic views of all the city of Limassol all the way down to the sea. Panthea hills are located in Limassol just above the highway, and more specifically above "Mesa Geitonia" roundabout from where you can access any location of Limassol in less than 5 to 10 minutes drive. The area is surrounded by all everyday amenities and is very near to all international schools like Foley's, Heritage, Iceland, Pascall.

The unit features:

3 bedrooms and 3 Bathrooms

122m2 covered internal areas, 34m2 covered balconies, 82m2 private roof garden

Underfloor heating

Photovoltaics for free electricity

Unobstructed view of the whole city of Limassol all the way down to the sea

Private swimming pool on the roof garden

Large communal swimming pool on the ground floor

03.07.2026

## **BRAND NEW 3 BEDROOM PENTHOUSE WITH ROOF GARDEN AND PANORAMIC VIEWS**

---

€ 5 500 /month

Communal gym on the ground floor

Private storage room and covered parking on the ground floor

PRICE FOR RENT PER MONTH €5500 FURNISHED with brand new furniture (nobody lived before)



---

03.07.2026

# BRAND NEW 3 BEDROOM PENTHOUSE WITH ROOF GARDEN AND PANORAMIC VIEWS

---

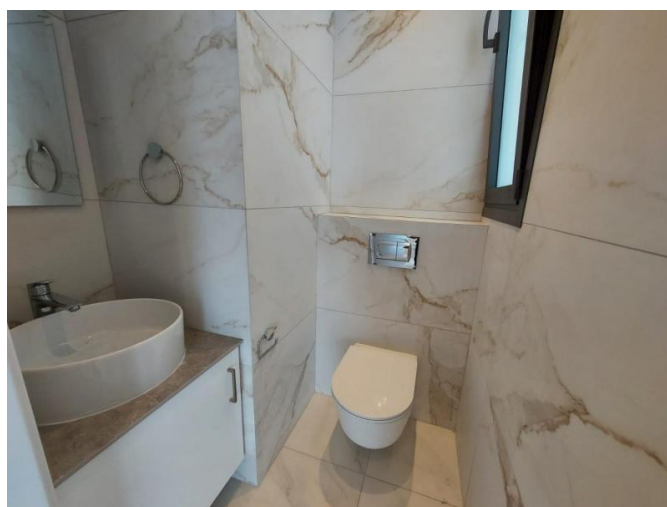
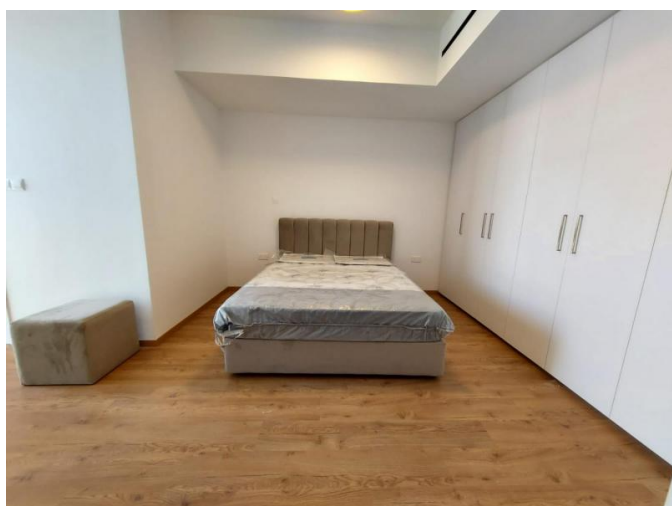
€ 5 500 /month



**BRAND NEW 3 BEDROOM PENTHOUSE  
WITH ROOF GARDEN AND PANORAMIC  
VIEWS**

---

€ 5 500 /month



**BRAND NEW 3 BEDROOM PENTHOUSE  
WITH ROOF GARDEN AND PANORAMIC  
VIEWS**

---

€ 5 500 /month

