

SPACIOUS GROUND FLOOR OFFICE/SHOP  
IN THE CITY CENTER CLOSE TO THE  
COURT

1 300 €/month

.....

Property Code:	1372	Type:	Long-term rent - Office
Location:	Limassol	Internal Area:	180 m²
Floor:	0		

Property features:			
Air Condition	Alarm	Solar panels for hot water	Double Glazing
Extractor Fan	Parking	Furniture	

Description:

SPACIOUS GROUND FLOOR OFFICE/SHOP IN THE CITY CENTER CLOSE TO THE COURT

The spacious office consists of:

reception area at the entrance  
waiting room  
room of 120SQ downstairs plus 60SQ upstairs  
W/C  
Kitchen  
Parking area  
conference room meeting

**SPACIOUS GROUND FLOOR OFFICE/SHOP  
IN THE CITY CENTER CLOSE TO THE  
COURT**

---

1 300 €/month



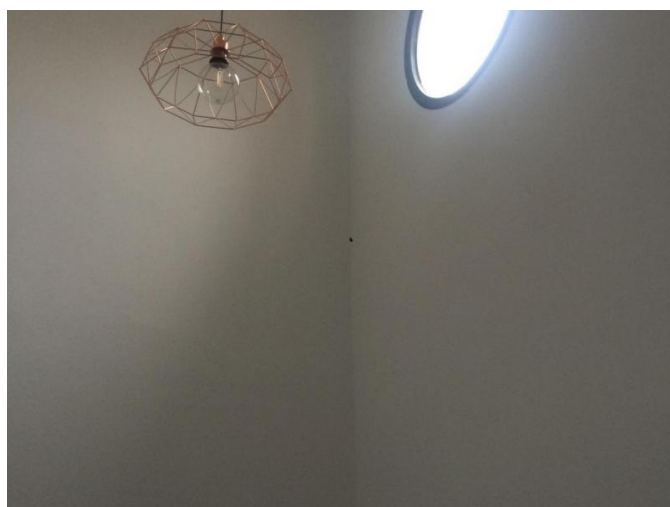
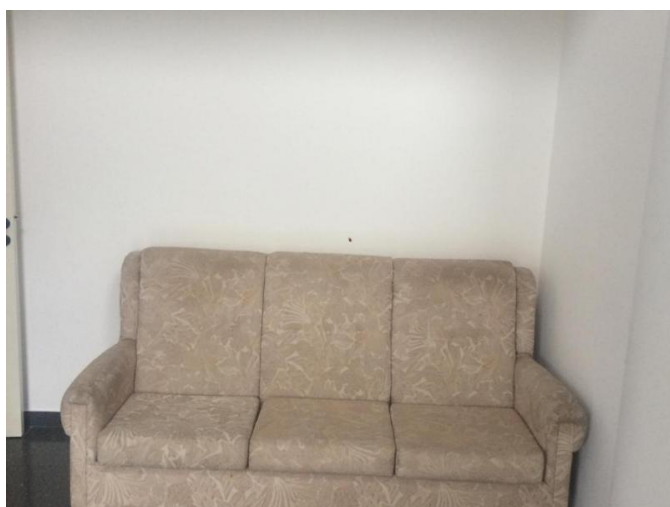
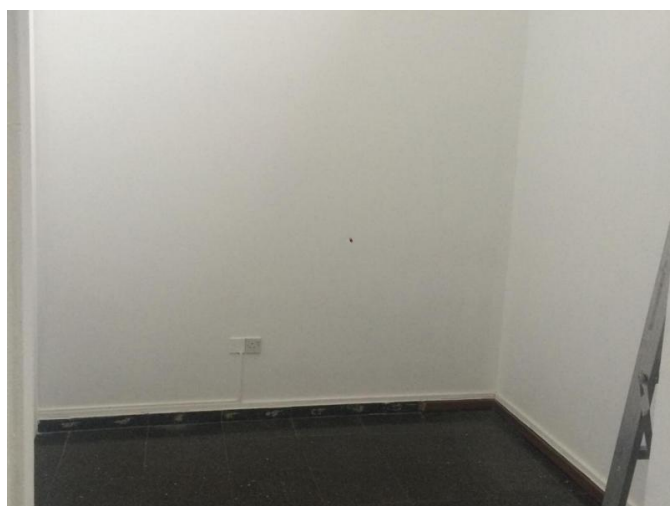
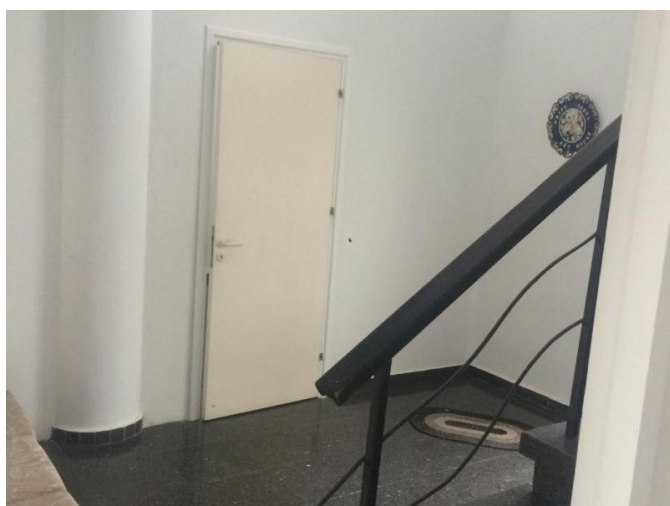
---

25.04.2024

**SPACIOUS GROUND FLOOR OFFICE/SHOP  
IN THE CITY CENTER CLOSE TO THE  
COURT**

---

1 300 €/month



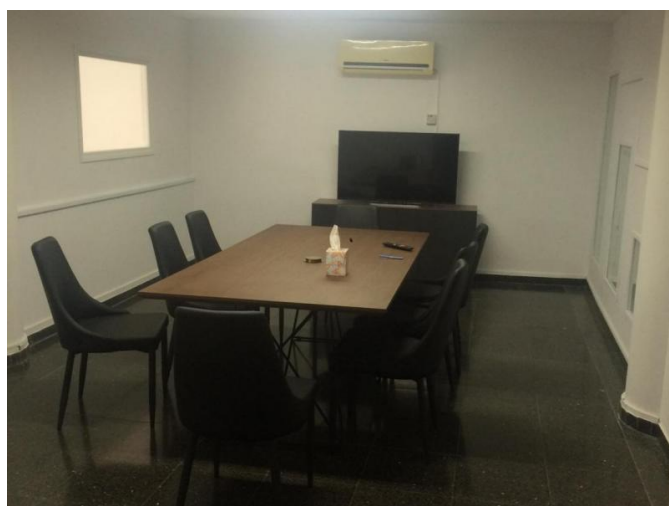
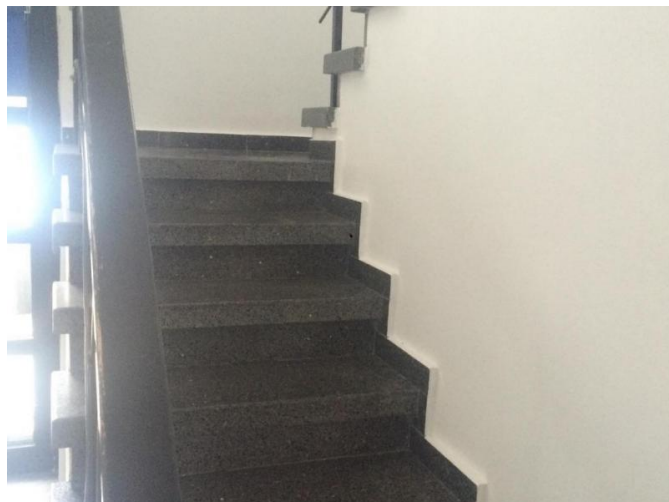
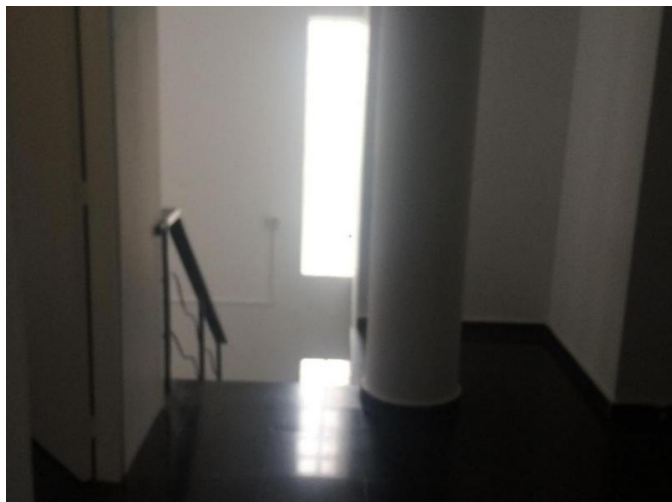
---

25.04.2024

**SPACIOUS GROUND FLOOR OFFICE/SHOP  
IN THE CITY CENTER CLOSE TO THE  
COURT**

---

1 300 €/month



---

25.04.2024