

COMMERCIAL UNIT OF 92 SQM ON BUSY ROAD WITH PRIVATE ENTRANCE

1 000 €/month

Property Code:	1438	Type:	Long-term rent - Commercial
Location:	Limassol - AGIOS SPYRIDONOS	Internal Area:	92 m ²
Renovation:	Renovated	Floor:	0
Number of floors:	2	Distance to airport:	65 km

Property features:

Unfurnished	Air Condition	Parking - Uncovered	Telephone Line
Alarm	Garden	Parking	

Description:

The commercial space of 92 sqm is under renovation and can be finished as per needs. The property has a direct exit to the live and busy road so can be used both as an office or retail unit.

Lights, A/C, sensors, and partitions (if needed) are included in the price. There's private parking for up to 3 cars and a private garden.

Viewings are highly recommended.

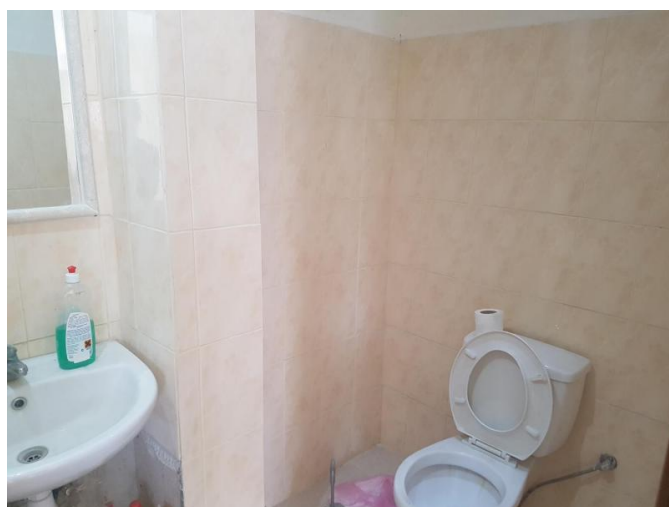
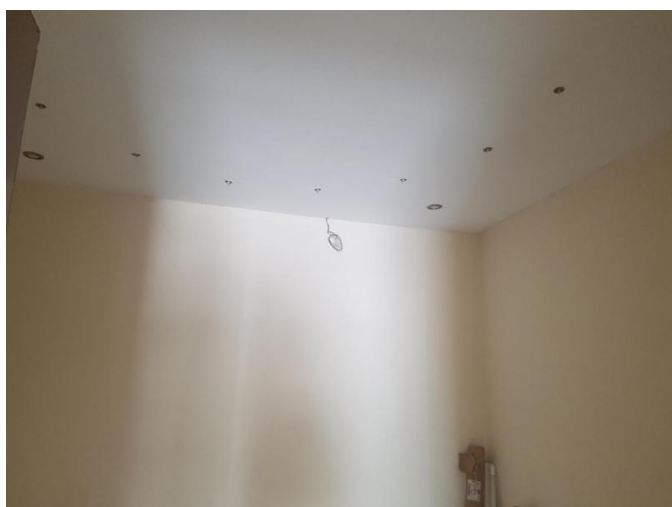
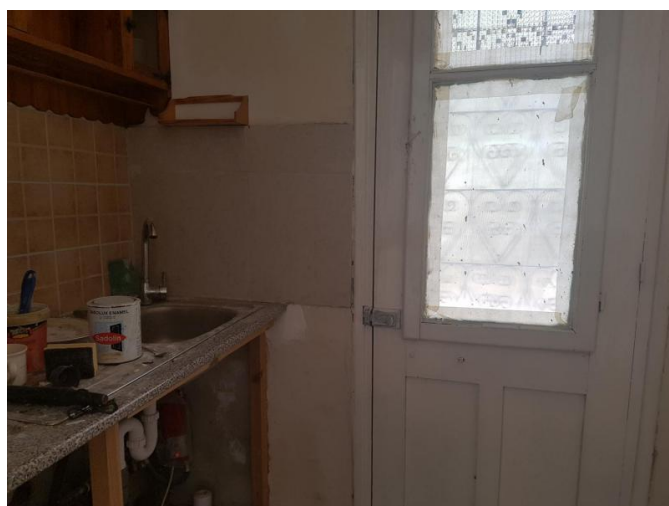
**COMMERCIAL UNIT OF 92 SQM ON BUSY
ROAD WITH PRIVATE ENTRANCE**

1 000 €/month



**COMMERCIAL UNIT OF 92 SQM ON BUSY
ROAD WITH PRIVATE ENTRANCE**

1 000 €/month



**COMMERCIAL UNIT OF 92 SQM ON BUSY
ROAD WITH PRIVATE ENTRANCE**

1 000 €/month

