

# OFFICE FOR RENT AT THE SEAFRONT NEAR LIMASSOL MARINA

3 900 €/month

---

<b>Property Code:</b>	1560	<b>Type:</b>	Long-term rent - Office
<b>Location:</b>	Limassol - MOLOS	<b>Internal Area:</b>	170 m <sup>2</sup>
<b>Floor:</b>	6	<b>Number of floors:</b>	8

---

## Property features:

---

Unfurnished	Air Condition	Telephone Line	VRV central ceiling system
Double Glazing	Balcony		

## Description:

---

LOCATION, LOCATION, LOCATION

AVAILABLE FROM 01/04/20

Office of 170m<sup>2</sup> at the six floor opposite the sea, with direct sea views located at Molos area, walking distance to Limassol Marina, Limassol's promenade and Limassol town centre

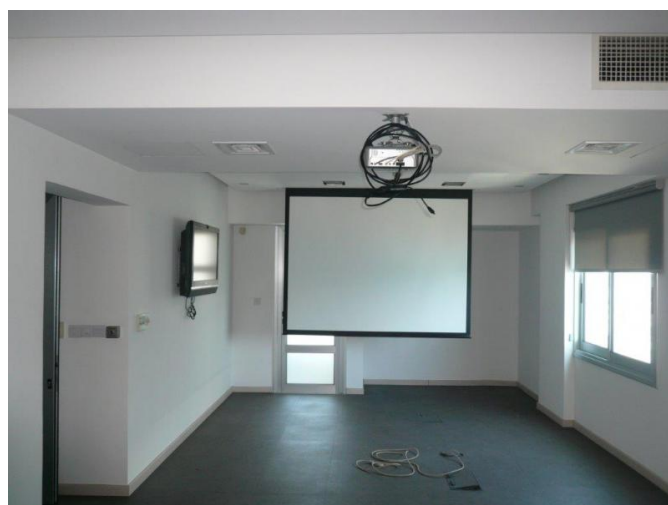
- 
- VRV air conditioning system
- Rising floor
- Separation with glass - 6 offices
- Director's office with private toilet and shower
- Structure cabling ready
- Telephone system
- Security system
- Access panels in doors
- Separate server room
- Two separate toilets
- Kitchen
- Parking spaces
- Large car park next door owned by the municipality

**2 deposits required**

**OFFICE FOR RENT AT THE SEAFRONT  
NEAR LIMASSOL MARINA**

---

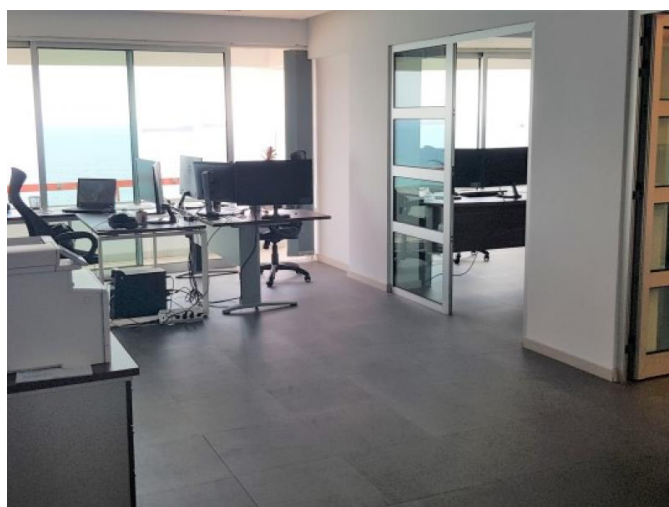
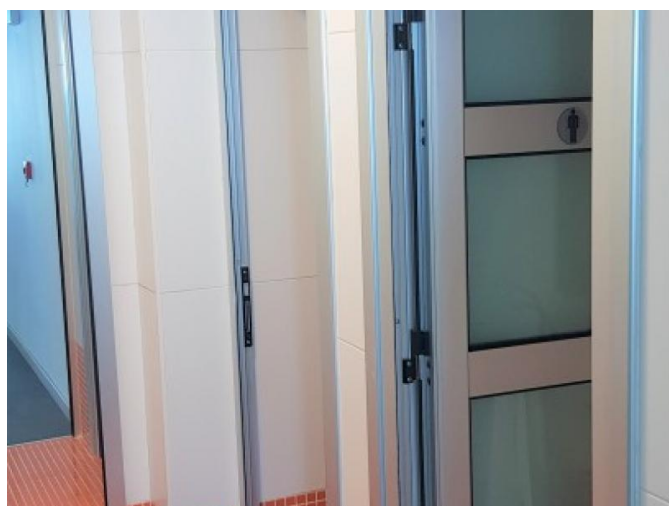
3 900 €/month



**OFFICE FOR RENT AT THE SEAFRONT  
NEAR LIMASSOL MARINA**

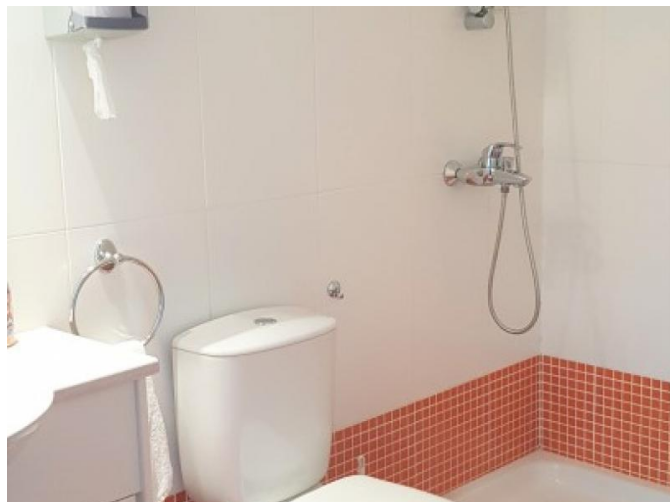
---

3 900 €/month



**OFFICE FOR RENT AT THE SEAFRONT  
NEAR LIMASSOL MARINA**

3 900 €/month



**OFFICE FOR RENT AT THE SEAFRONT  
NEAR LIMASSOL MARINA**

---

3 900 €/month

