

---

<b>Property Code:</b>	1613	<b>Type:</b>	Long-term rent - Shop
<b>Location:</b>	Limassol - CITY CENTER	<b>Internal Area:</b>	100 m <sup>2</sup>
<b>Renovation:</b>	Design	<b>Number of floors:</b>	2

---

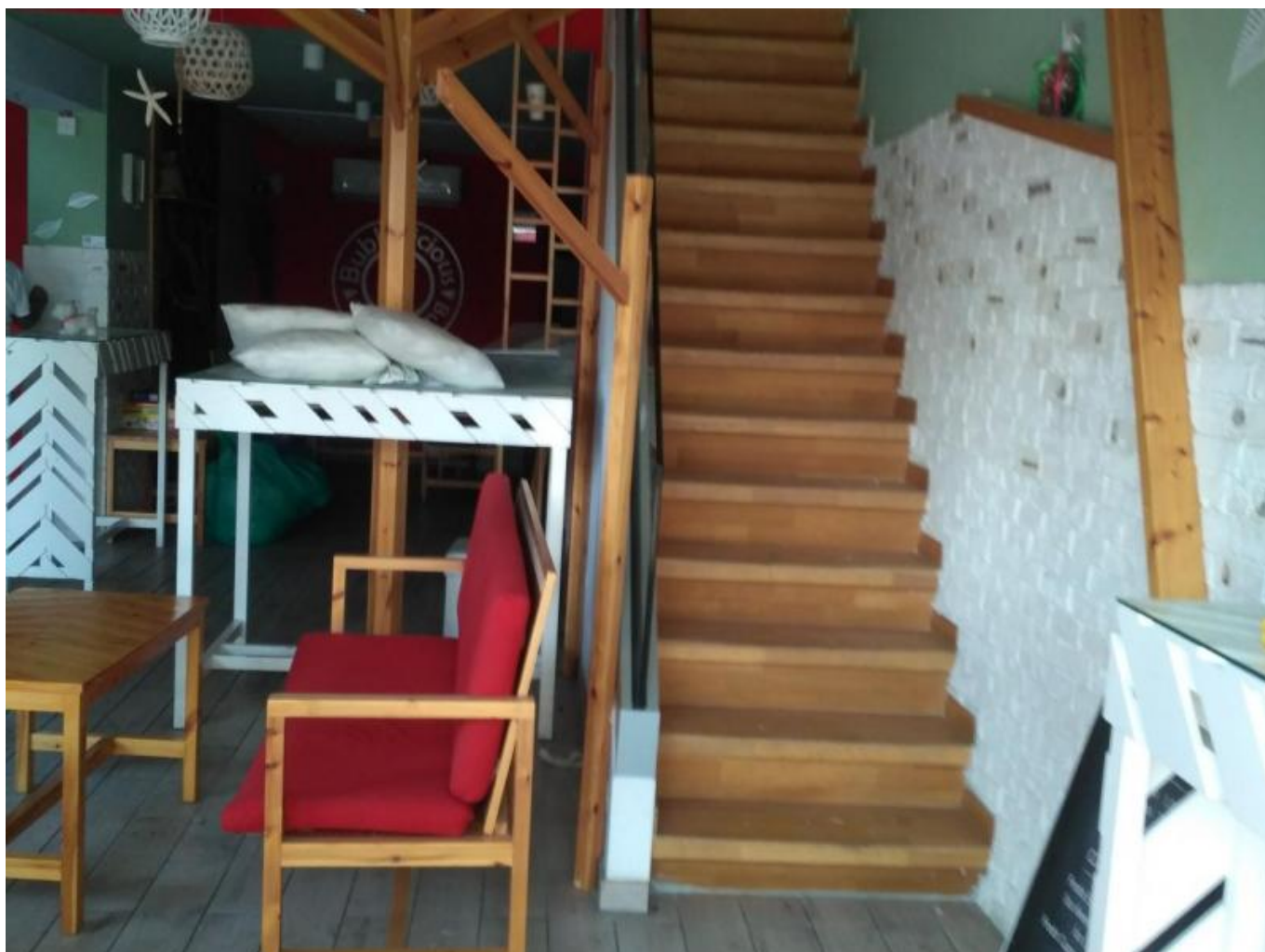
**Property features:**

Air Condition                      Parking - Uncovered      Telephone Line

**Description:**

FOR RENT SHOWROOM/SHOP IN ENAERIOS.

This property is located on a very busy road. Covered area of the shop is 100 sq m. and it consists of 2 floors, 3 WCs, 1 shower and a kitchen. There are 2 parking places in front and 2 private parking places at the back side of the shop.



**FOR RENT SHOWROOM/SHOP IN  
ENAERIOS**

---

€ 2 000 /month

