

**120 SQM SPACE WITH EASY ACCESS TO
THE HIGH WAY**

1 000 €/month

Property Code:	1666	Type:	Long-term rent - Office
Location:	Limassol - POTAMOS GERMASOGIA	Internal Area:	120 m ²

Property features:

Unfurnished	Air Condition	Telephone Line	Solar panels for hot water
Cooker	Parking	Refrigerator	Balcony

Description:

120 sqm SPACE WITH EASY ACCESS TO THE HIGH WAY

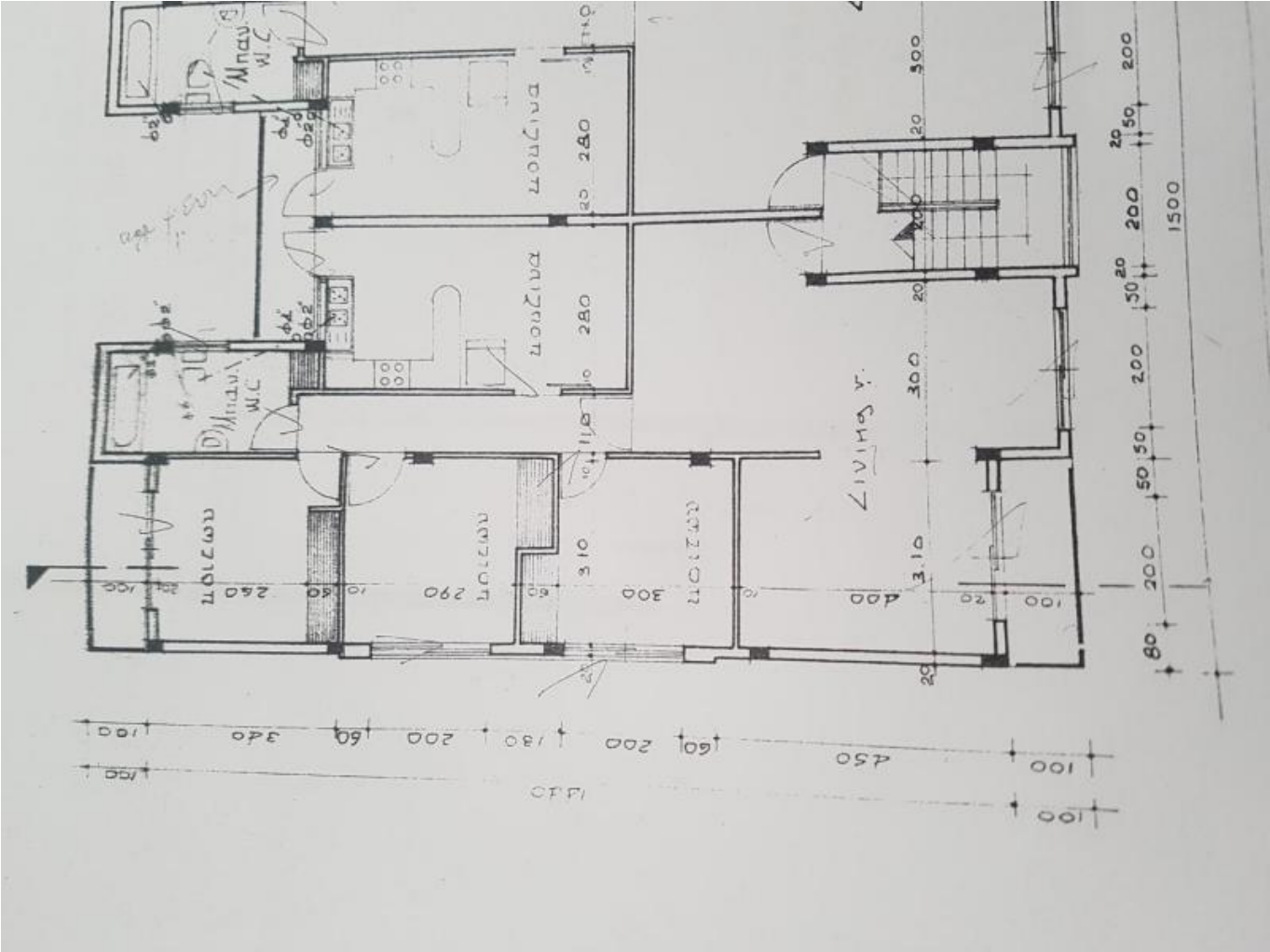
The property of 120 sqm sits on the first floor of a small building situated in Potamos Germasogias close to all amenities and easy access to the highway.

The property comprises of spacious entrance area with a balcony, 3 separate rooms, a separate kitchen with electric appliances, a veranda, bathroom.

There's an A/C throughout, a solar system for hot water preparation, and a parking space.

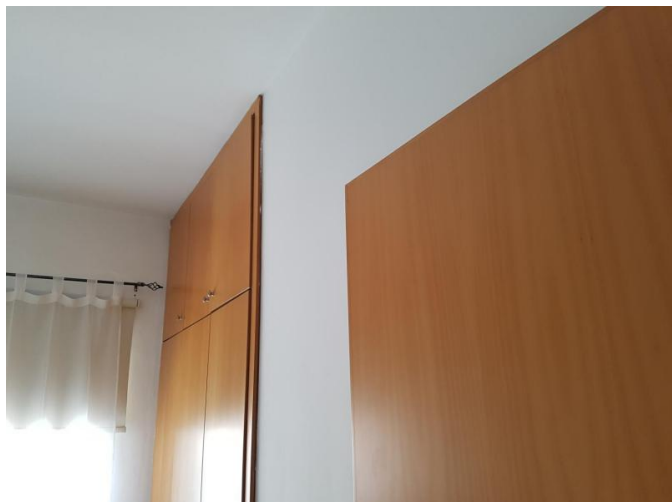
120 SQM SPACE WITH EASY ACCESS TO
THE HIGH WAY

1 000 €/month



**120 SQM SPACE WITH EASY ACCESS TO
THE HIGH WAY**

1 000 €/month



15.12.2025