

SPACIOUS 2 BEDROOM APARTMENT WITH PANORAMIC VIEWS IN A QUIET AREA

1 200 €/month

Property Code:	1763	Type:	Long-term rent - Apartment
Location:	Limassol - PANTHEA	Internal Area:	86 m ²
Bedrooms:	2	Bathrooms:	2
Floor:	1	Number of floors:	3
Year of construction:	2010	Distance to the sea:	5 km
Distance to airport:	65 km	Uncovered verandas, m²:	150

Property features:

Air Condition	Parking - Covered	Parking - Uncovered	Telephone Line
Furnished	Store Room	Solar panels for hot water	Double Glazing
Washing machine	Dish washer	Microwave	Cooker
Extractor Fan	Parking	Refrigerator	Balcony
Furniture			

Description:

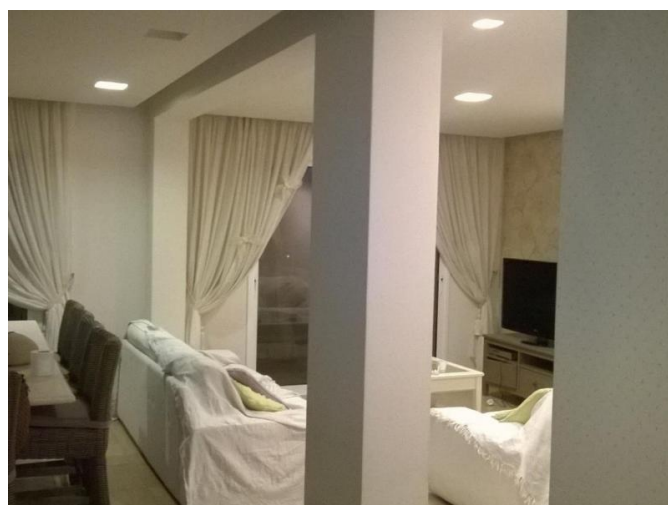
SPACIOUS 2 BEDROOM APARTMENT WITH PANORAMIC VIEWS IN A QUIET AREA

This very spacious 2 bedroom apartment sits in a small apartment block located in the Panthea area in a quiet location. Placed on the first floor with only three flats per floor this flat comes for rent fully furnished and equipped, with an added benefit of an exceptionally large veranda of 150 sqm with sea views giving the feel of ground floor living. The open planned kitchen entails a large island bar joining the cosy living room together. The main bathroom is spacious with special effect day lighting. The main bedroom has a built-in lady's dressing table, floor-to-ceiling mirrored wardrobe doors and designed wallpaper, as well as the second bedroom, has floor-to-ceiling mirrored wardrobe doors and designed wallpaper. Both bedrooms have access to the veranda. The apartment has plenty of storage space with ground storage and covered parking space. There's A/C throughout, solar panels for hot water and a water pressure system.

The flat is available for long-term rental and ready to move in.

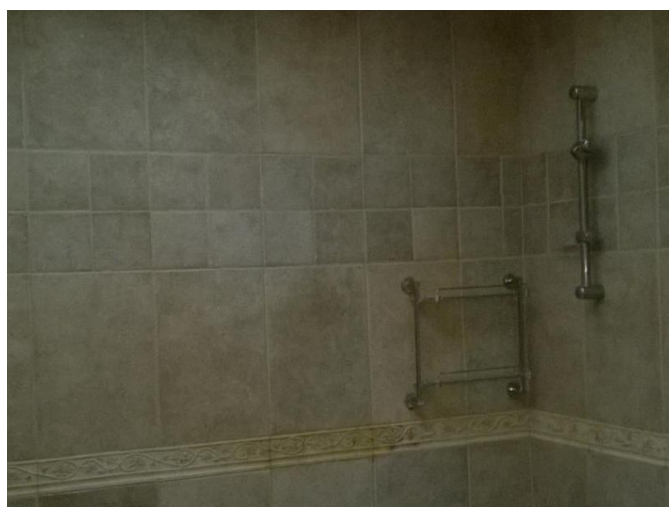
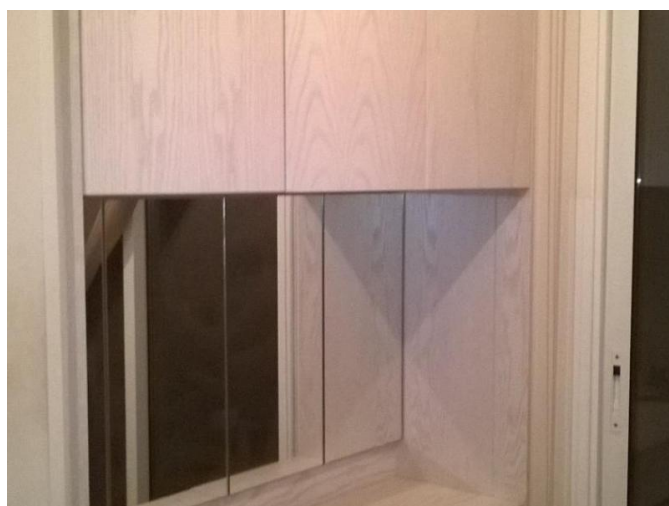
**SPACIOUS 2 BEDROOM APARTMENT WITH
PANORAMIC VIEWS IN A QUIET AREA**

1 200 €/month



**SPACIOUS 2 BEDROOM APARTMENT WITH
PANORAMIC VIEWS IN A QUIET AREA**

1 200 €/month



**SPACIOUS 2 BEDROOM APARTMENT WITH
PANORAMIC VIEWS IN A QUIET AREA**

1 200 €/month

