

1 BEDROOM APARTMENT JUST ACCROS THE SEA AND EASY ACCESS TO HIGH WAY

1 000 €/month
~~1 100 €/month~~

Property Code:	1848	Type:	Long-term rent - Apartment
Location:	Limassol - POTAMOS GERMASOGIA	Internal Area:	48 m ²
Bedrooms:	1	Bathrooms:	1
Distance to the sea:	100 m	Distance to airport:	60 km
Covered verandas, 20 m²:			

Property features:

Common Pool	Air Condition	Parking - Covered	Parking - Uncovered
Telephone Line	Furnished	Solar panels for hot water	Double Glazing
Garden	Oven	Washing machine	Microwave
Cooker	Balcony		

Description:

LOVELY and MODERN 1 bedroom APARTMENT IN A PALM BEACH COMPLEX IN TOURIST AREA. This property is a part of a complex with a 2 swimming pools (just renovated), tennis court and a nice garden. Only a few steps to the beach! It consists of an open plan kitchen/ sitting area, separate bedroom, full family bathroom. There A/C throughout, double glazed windows, parquet flooring.

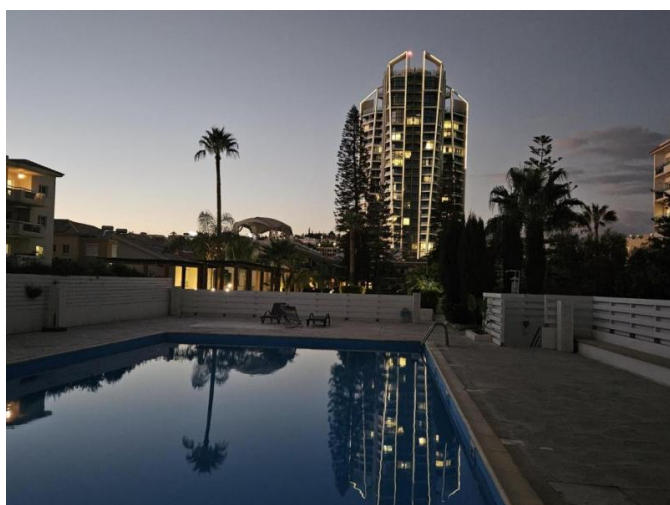
There is a spacious veranda all around with side sea view and nice views to the inner yard and swimming pools, modern design, parking place. Flat comes for rent fully furnished and equipped with hose hold equipment, new washing machine .

Bus stop with a route Nr.30 is just outside of building, supermarkets Metro and Lidl, Pharmacy, bakery Sigma 24/7 - just around the corney within 2min walk, easy and smooth access to the high way.

Rental price - 1000 eur / month including common expenses, 1 deposit

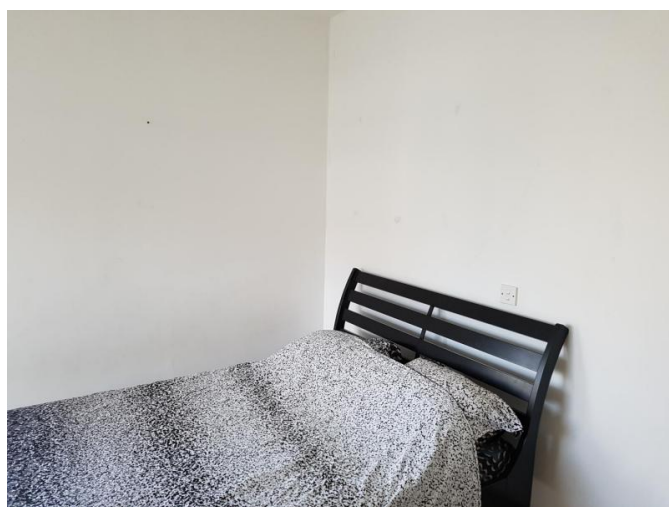
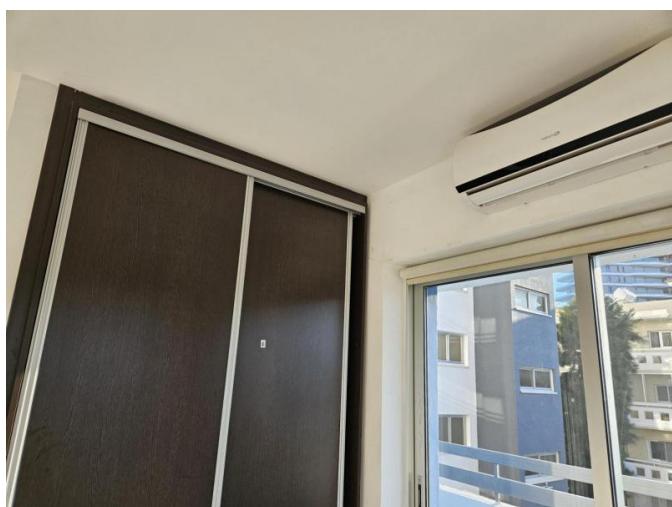
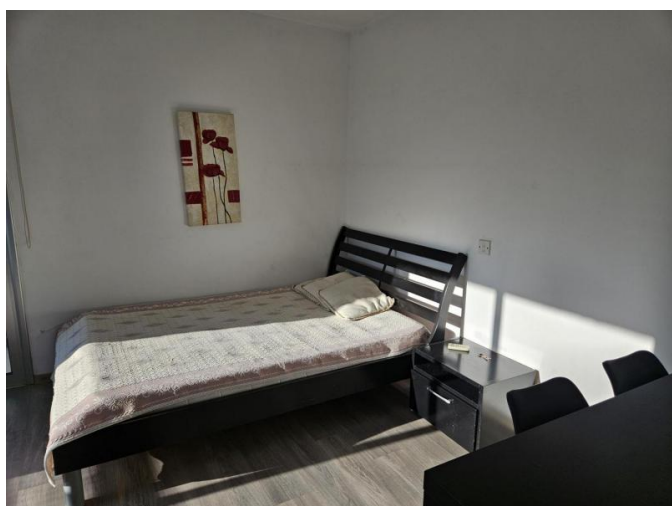
**1 BEDROOM APARTMENT JUST ACCROS
THE SEA AND EASY ACCESS TO HIGH WAY**

1 000 €/month
~~1-100 €/month~~



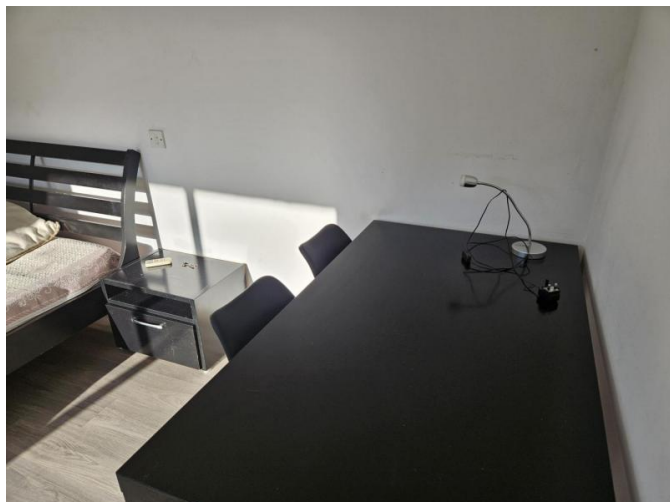
**1 BEDROOM APARTMENT JUST ACCROS
THE SEA AND EASY ACCESS TO HIGH WAY**

1 000 €/month
~~1-100 €/month~~



**1 BEDROOM APARTMENT JUST ACCROSS
THE SEA AND EASY ACCESS TO HIGH WAY**

1 000 €/month
~~1-100 €/month~~



**1 BEDROOM APARTMENT JUST ACCROSS
THE SEA AND EASY ACCESS TO HIGH WAY**

1 000 €/month
~~1-100 €/month~~

