

## MODERN 5 BEDROOMS VILLA WITH BEAUTIFUL VIEWS LOCATED IN RESIDENTIAL AREA OF PANTHEA...

3 000 €/month

<b>Property Code:</b>	1917	<b>Type:</b>	Long-term rent - House/Villa
<b>Location:</b>	Limassol - PANTHEA	<b>Internal Area:</b>	340 m <sup>2</sup>
<b>Plot Area:</b>	800 m <sup>2</sup>	<b>Bedrooms:</b>	4
<b>Bathrooms:</b>	4+	<b>Number of floors:</b>	2
<b>Heating:</b>	Central heating	<b>Distance to the sea:</b>	5.4 km
<b>Covered verandas, 30 m<sup>2</sup>:</b>			

### Property features:

Heating	Air Condition	Furnished	Garden
Washing machine	Cooker	Parking	Refrigerator

### Description:

Modern UNFURNISHED villa with 5 bedrooms and beautiful views, located in residential area of Panthea (Opalia Hill).

Reflects privacy, house equipped for a comfortable long stay, has central heating, air conditioning, wood floor in all bedrooms, bathrooms with high-quality finishes.

The ground floor consists of: 2 bedrooms, laundry room, kitchen and store room.

On the first floor there is a large landscaped garden outside, a spacious veranda with a barbecue area; inside on the first floor there is a large open plan living room with fireplace, dining room, separate kitchen, guest toilet.

On the second floor there are 3 bedrooms, a bathroom, 2 showers, a large veranda. Perfectly located in quiet residential area and at the same time within five minutes drive from the city center, public and private schools.

### Two deposits

**If payment is made every 6 months the price can be reduced to €2 600 per month**

net covered area 367sqm

plot area 801sqm

4 bedrooms (3 + 1 basement/maids room)

Semi -furnished

a/c in all rooms

fire place

kitchen appliances

underfloor heating

### Ground floor:

An open plan spacious living and dinning area,

Separate large fully equipped kitchen,

TV room,

guest wc,

huge verandas

### First floor:

3 large bedrooms,

1 en-suite with walk in wardrobe,

verandas

25.02.2026

## MODERN 5 BEDROOMS VILLA WITH BEAUTIFUL VIEWS LOCATED IN RESIDENTIAL AREA OF PANTHEA...

---

3 000 €/month

1 bathroom.

**Basement:**

2 bedrooms

kitchen,

living/TV area,

wc.



---

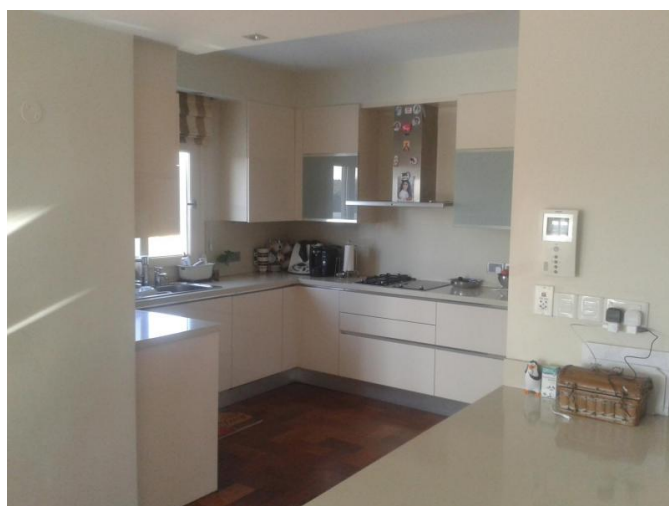
25.02.2026



**MODERN 5 BEDROOMS VILLA WITH  
BEAUTIFUL VIEWS LOCATED IN  
RESIDENTIAL AREA OF PANTHEA...**

---

3 000 €/month





**MODERN 5 BEDROOMS VILLA WITH  
BEAUTIFUL VIEWS LOCATED IN  
RESIDENTIAL AREA OF PANTHEA...**

---

3 000 €/month



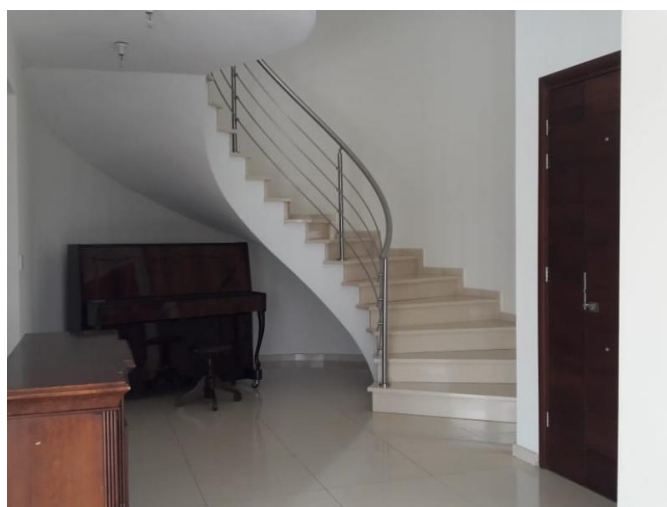
---

25.02.2026

**MODERN 5 BEDROOMS VILLA WITH  
BEAUTIFUL VIEWS LOCATED IN  
RESIDENTIAL AREA OF PANTHEA...**

---

3 000 €/month



---

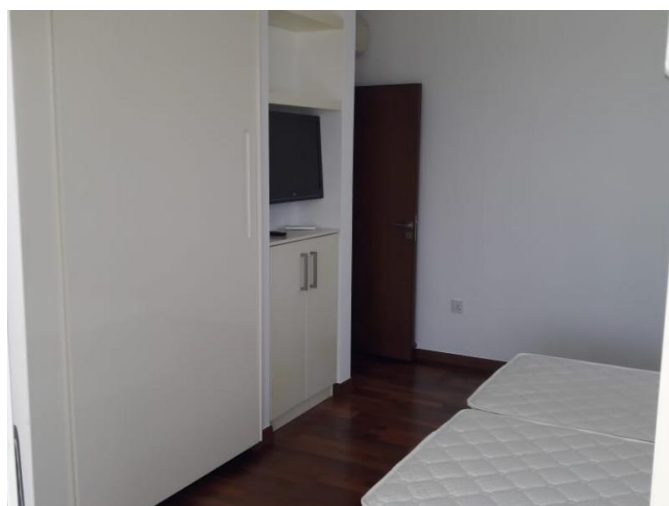
25.02.2026



**MODERN 5 BEDROOMS VILLA WITH  
BEAUTIFUL VIEWS LOCATED IN  
RESIDENTIAL AREA OF PANTHEA...**

---

3 000 €/month



---

25.02.2026