

SUPERRIOR 3 BEDROOM APARTMENT +SELF CONTAINED STUDIO IN SMALL BUILDING CLOSE TO ALL...

1 800 €/month

Property Code:	1944	Type:	Long-term rent - Apartment
Location:	Limassol - PANTHEA	Internal Area:	165 m ²
Bedrooms:	3	Bathrooms:	3
Floor:	2	Number of floors:	3
Heating:	Diesel heating	Year of construction:	2013
Distance to the sea:	4 km	Distance to airport:	65 km
Covered verandas, m²:	40		

Property features:

Heating	Air Condition	Parking - Covered	Parking - Uncovered
Telephone Line	Alarm	Furnished	Store Room
Solar panels for hot water	Double Glazing	Garden	Maids Room
Washing machine	Dish washer	Microwave	Cooker
Extractor Fan	Parking	Refrigerator	Balcony
Furniture			

Description:

A very spacious 3 BR apartment of 165 sqm is situated on the 2nd floor of 7 y.o. 3 floors building with 5 apartments only and is located in a very quiet neighbourhood, close to Grammar School, smooth access to Folley's, Heritage and Pascal International schools. It is very close to all amenities, such as supermarkets, pharmacies, banks, public schools and kindergartens, with smooth access to the highway and 15 min drive to the sea.

An apartment consists of a large living room with a spacious veranda offering amazing panoramic views, a separate kitchen with a back veranda, equipped with built-in high-quality furniture and all electric appliances MIELE, with a balcony. There're 3 double bedrooms, one with a master ensuite, another 2 bedrooms sharing a full family bathroom and a spacious balcony. In addition, there's a guest WC. On the ground floor of the building, there's a storage and extra studio apartment of 15 sqm, which can be used as made's accommodation or hobby studio, covered parking place for 2 cars. There's a nicely equipped and maintained common park with a BBQ area for residents only. All premises are gated and secured with video cameras.

The property is built using high-end materials, such as double-glazed thermal isolated windows with electric shutters, A/C and Central Heating throughout, wooden parquet flooring in the bedrooms, high-quality sanitary wear and electric appliances, and solar panels for hot water preparation.

Viewings are very highly recommended.

06.02.2026

**SUPERIOR 3 BEDROOM APARTMENT
+SELF CONTAINED STUDIO IN SMALL
BUILDING CLOSE TO ALL...**

1 800 €/month



06.02.2026

**SUPERIOR 3 BEDROOM APARTMENT
+SELF CONTAINED STUDIO IN SMALL
BUILDING CLOSE TO ALL...**

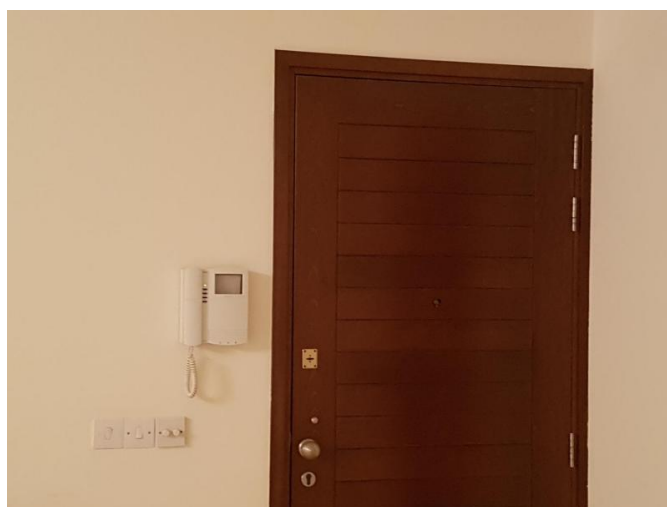
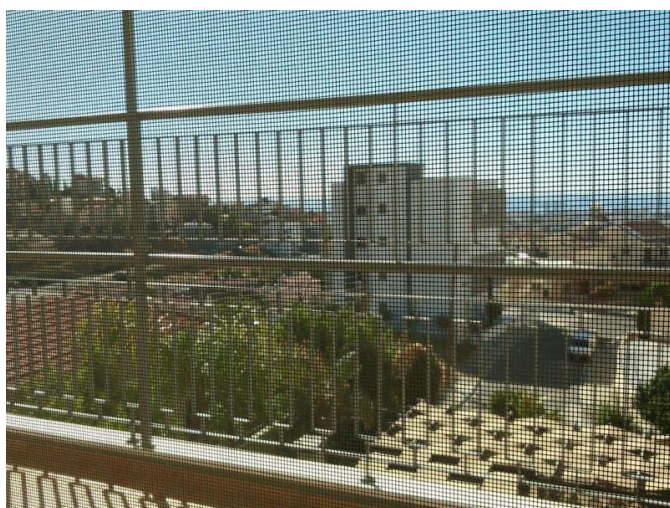
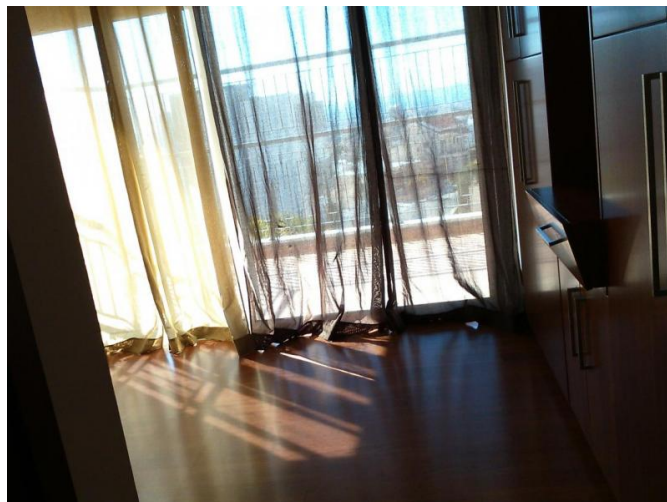
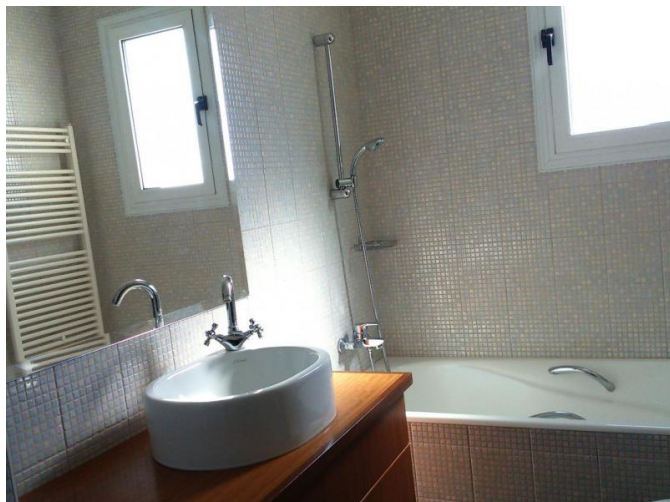
1 800 €/month



06.02.2026

**SUPERIOR 3 BEDROOM APARTMENT
+SELF CONTAINED STUDIO IN SMALL
BUILDING CLOSE TO ALL...**

1 800 €/month



06.02.2026

**SUPERIOR 3 BEDROOM APARTMENT
+SELF CONTAINED STUDIO IN SMALL
BUILDING CLOSE TO ALL...**

1 800 €/month



06.02.2026