

SPACIOUS 4 BEDROOM HOUSE WITH PANORAMIC VIEWS AND EASY ACCESS TO HIGH WAY AND...

€ 2 500 /month

Property Code:	2045	Type:	Long-term rent - House/Villa
Location:	Limassol - AGIOS ATHANASIOS	Internal Area:	250 m ²
Plot Area:	450 m ²	Bedrooms:	4
Bathrooms:	3	Renovation:	Renovated
Heating:	Diesel heating	Year of construction:	2004
Distance to the sea:	3 km	Distance to airport:	60 km
Covered verandas, m²:	45		

Property features:

Heating	Air Condition	Parking - Covered	Parking - Uncovered
Telephone Line	Alarm	Furnished	Store Room
Laundry room	Solar panels for hot water	Double Glazing	Garage
Garden	Oven	Washing machine	Dish washer
Microwave	Cooker	Extractor Fan	Parking
Refrigerator	Balcony	Furniture	

Description:

This spacious 4 bedroom villa of 250 sqm sits on the plot with panoramic views of 450 sqm within a quiet and prestigious area of Ag. Athanasios within 3 min drive to the high way (Linopetra roundabout) and 7min- to the beach.

The house is built in 3 levels and consists of spacious dining/living area with an exit to spacious patio leading to private back yard, separate spacious kitchen with breakfast area, extended to pantry room and guest WC on the ground floor. There're 4 double bedrooms, one of them -the master bedroom with en-suite and balcony with nice panoramic views, full family bathroom with bathtub and shower; the spacious area is in an attic which can be used as an extra storage place.

House is 15 years old, recently refurbished and was built using high-quality finishes, such as double glazed windows, mosquito nets, electric shutters, A/C (GREE), C/H (diesel), Alarm Security system, Solar system for water preparation and much more features the property.

There's a spacious yard with BBQ area, private parking lot for up to 3 cars, gated entrance to the property.

The house comes for rent either semi furniture or fully furnished and equipped with electric appliances for the price 2500 euro/month.

Must be seen to be fully appreciated.

**SPACIOUS 4 BEDROOM HOUSE WITH
PANORAMIC VIEWS AND EASY ACCESS TO
HIGH WAY AND...**

€ 2 500 /month



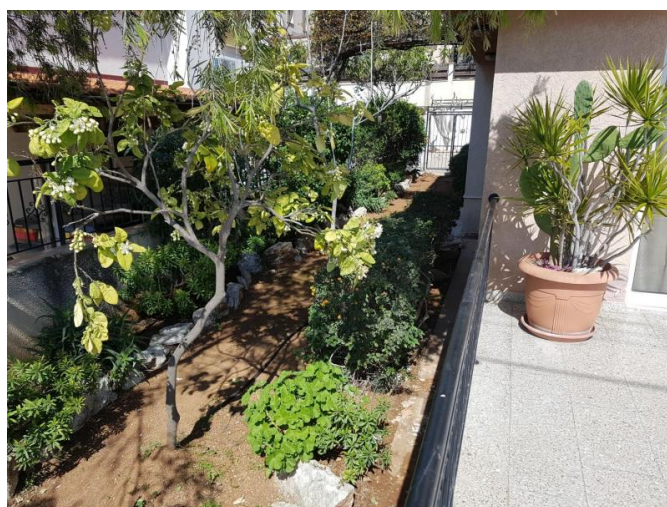
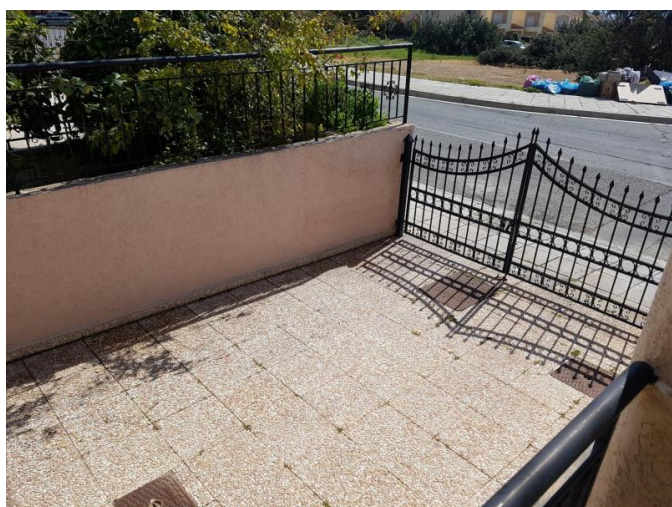
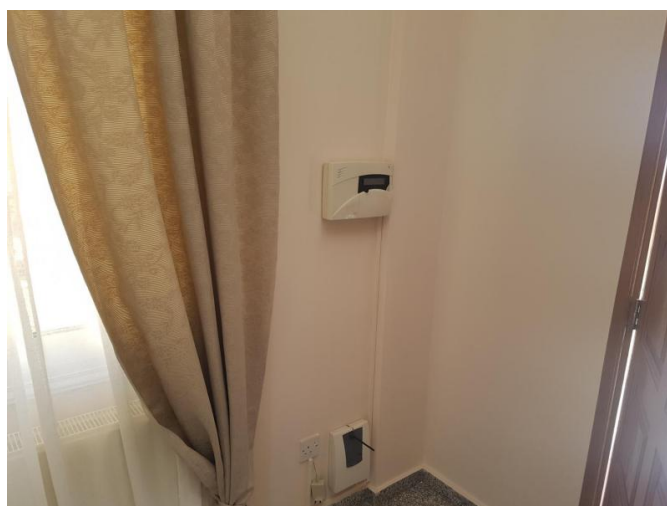
**SPACIOUS 4 BEDROOM HOUSE WITH
PANORAMIC VIEWS AND EASY ACCESS TO
HIGH WAY AND...**

€ 2 500 /month



**SPACIOUS 4 BEDROOM HOUSE WITH
PANORAMIC VIEWS AND EASY ACCESS TO
HIGH WAY AND...**

€ 2 500 /month



**SPACIOUS 4 BEDROOM HOUSE WITH
PANORAMIC VIEWS AND EASY ACCESS TO
HIGH WAY AND...**

€ 2 500 /month

