

SPACIOUS 4BR VILLA WITH PRIVATE GARDEN WITH EASY ACCES TO THE HIGH WAY

1 500 €/month

Property Code:	2047	Type:	Long-term rent - House/Villa
Location:	Limassol - YPSONAS	Internal Area:	320 m ²
Plot Area:	450 m ²	Bedrooms:	4
Bathrooms:	4+	Renovation:	Renovated
Heating:	Central heating	Year of construction:	2007
Distance to the sea:	5 km	Distance to airport:	60 km
Covered verandas, m²:	25		

Property features:

Unfurnished	Heating	Air Condition	Parking - Covered
Parking - Uncovered	Telephone Line	Store Room	Laundry room
Solar panels for hot water	Double Glazing	Garage	Garden
Maids Room	Oven	Washing machine	Dish washer
Microwave	Cooker	Extractor Fan	Parking
Refrigerator	Balcony		

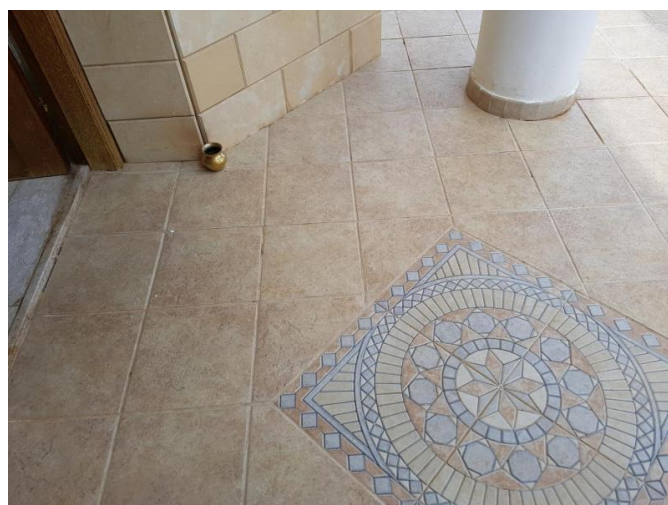
Description:

The 4br villa of 320sqm was built in 2007 and is in excellent condition. It is situated on a big plot and has a big parametric courtyard, garden and garage. At the ground floor level, there is a huge double living area, guest WC, a spacious separate kitchen and a kitchenette/pantry room. On the upper floor, there is a spacious hall with a mini kitchenette, a family bathroom and 4 spacious bedrooms, 2 of them with balconies and the master bedroom with an ensuite shower. The villa has full AC, provision for central heating, double glazed windows, a Solar system for hot water preparation, and wardrobes. It is located in the Ypsonas-Agiaas Syllas area, 7 minutes drive to the city centre, close to Curium beach and with easy access to the highway.

Viewings are highly recommended!

**SPACIOUS 4BR VILLA WITH PRIVATE
GARDEN WITH EASY ACCES TO THE HIGH
WAY**

1 500 €/month



19.02.2026

SPACIOUS 4BR VILLA WITH PRIVATE GARDEN WITH EASY ACCES TO THE HIGH WAY

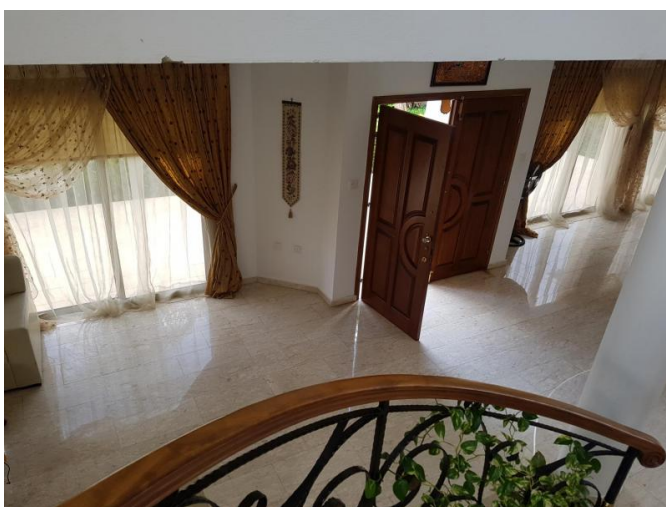
1 500 €/month



19.02.2026

SPACIOUS 4BR VILLA WITH PRIVATE GARDEN WITH EASY ACCES TO THE HIGH WAY

1 500 €/month



19.02.2026

SPACIOUS 4BR VILLA WITH PRIVATE GARDEN WITH EASY ACCES TO THE HIGH WAY

1 500 €/month



19.02.2026