

DOUPLEX 3 BEDROOM PENTHOUSE WITH ROOF GARDEN AND PRIVATE SWIMMING POOL/JACCUZZI

575 000 €

| | | | |
|---|----------------------|------------------------------|--------------------|
| Property Code: | 2053 | Type: | Sale - Apartment |
| Location: | Limassol - LINOPETRA | Internal Area: | 120 m ² |
| Bedrooms: | 3 | Bathrooms: | 4+ |
| Renovation: | Modern | Floor: | 3 |
| Number of floors: | 3 | Heating: | Underfloor heating |
| Energy class: | B | Year of construction: | 2020 |
| Distance to the sea: | 1.2 km | Distance to airport: | 65 km |
| Status: | Under Construction | VAT: | PLUS |
| Covered verandas, m²: | 29 | | |

Property features:

| | | | |
|----------------------------|----------------|-------------------|---------------------|
| Heating | Air Condition | Parking - Covered | Parking - Uncovered |
| Telephone Line | Alarm | Private Pool | Store Room |
| Solar panels for hot water | Double Glazing | Garage | Garden |
| Washing machine | Dish washer | Cooker | Parking |
| Refrigerator | Balcony | Furniture | |

Description:

Brand new and modern luxury building in Linopetra area in Limassol. The building is located in an excellent location near to all amenities (schools, supermarkets, pharmacies, restaurants etc). It is 5 minutes drive to the sea. It consists of 8 apartments, 2 of one bedroom, 3 of 2 bedrooms and 3 of 3 bedrooms.

Halcyon is a high quality development and will be constructed to the highest standards with the best materials. All the apartments are spacious with large balconies. Each flat comes with private parking and storage room.

Interior and exterior specifications:

High quality first choice porcelanato tiles

Laminated parquet in bedrooms

Modern Italian high standard kitchen cabinets and wardrobes

German insulated aluminium double glazes windows

Provision for floor heating

Provision for air condition VRV system□

**DOUPLEX 3 BEDROOM PENTHOUSE WITH
ROOF GARDEN AND PRIVATE SWIMMING
POOL/JACCUZZI**

575 000 €

Thermo insulation shell around building and roof□

Intercom system

Security entrance doors

Solar panel, reservoir tank

Pressure system

Property description:

Bedrooms: 3

Bathrooms: 4

Covered Area: 120m²

Covered Veranda: 29m²

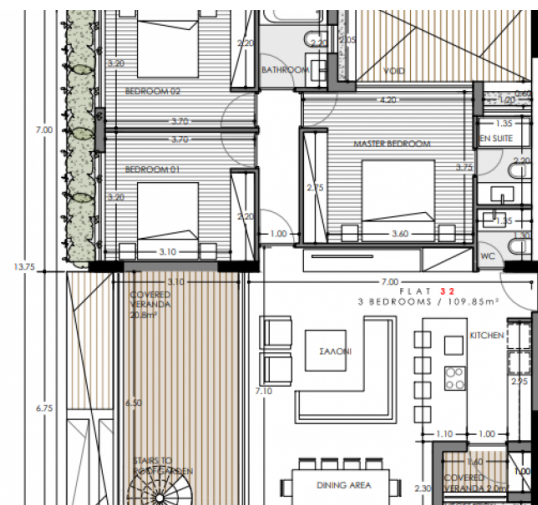
Total Covered Area: 211m²

Parking spaces: 2

Storage

DOUPLEX 3 BEDROOM PENTHOUSE WITH ROOF GARDEN AND PRIVATE SWIMMING POOL/JACUZZI

575 000 €



DOUPLEX 3 BEDROOM PENTHOUSE WITH ROOF GARDEN AND PRIVATE SWIMMING POOL/JACUZZI

575 000 €

