

## SPACIOUS 2 BEDROOM APARTMENT OF 100 SQM IN THE CITY CENTRE

1 000 €/month

---

|                                 |                        |   |                               |
|---------------------------------|------------------------|---|-------------------------------|
| <b>Property Code:</b>           | 2071                   | <b>Type:</b>                                      | Long-term rent -<br>Apartment |
| <b>Location:</b>                | Limassol - CITY CENTER | <b>Internal Area:</b>                             | 100 m <sup>2</sup>            |
| <b>Bedrooms:</b>                | 2                      | <b>Bathrooms:</b>                                 | 1                             |
| <b>Renovation:</b>              | Renovated              | <b>Floor:</b>                                     | 3                             |
| <b>Number of floors:</b>        | 4                      | <b>Year of<br/>construction:</b>                  | 2010                          |
| <b>Distance to<br/>airport:</b> | 65 km                  | <b>Covered verandas,<br/>8<br/>m<sup>2</sup>:</b> |                               |

### Property features:

---

|                 |                               |                     |                |
|-----------------|-------------------------------|---------------------|----------------|
| Air Condition   | Parking - Covered             | Parking - Uncovered | Telephone Line |
| Furnished       | Solar panels for hot<br>water | Double Glazing      | Oven           |
| Washing machine | Microwave                     | Cooker              | Parking        |
| Refrigerator    | Balcony                       | Furniture           |                |

### Description:

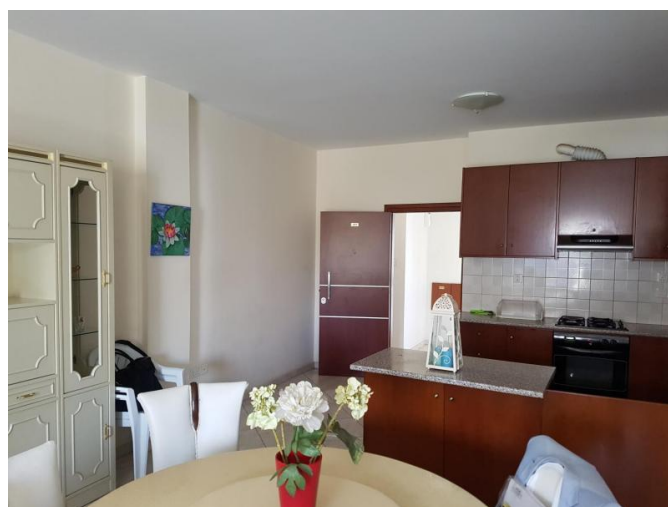
---

This nearly new, fully furnished apartment of 100m<sup>2</sup> sits on the 3rd floor of a small and well-maintained building with just 8 apartments, has a spacious veranda, facing the East/South and offers beautiful panoramic views with partial sea and mountain views. The apartment is nicely decorated, has A/C throughout, double glazed windows with electric shutters, solar panels and covered parking.

**SPACIOUS 2 BEDROOM APARTMENT OF  
100 SQM IN THE CITY CENTRE**

---

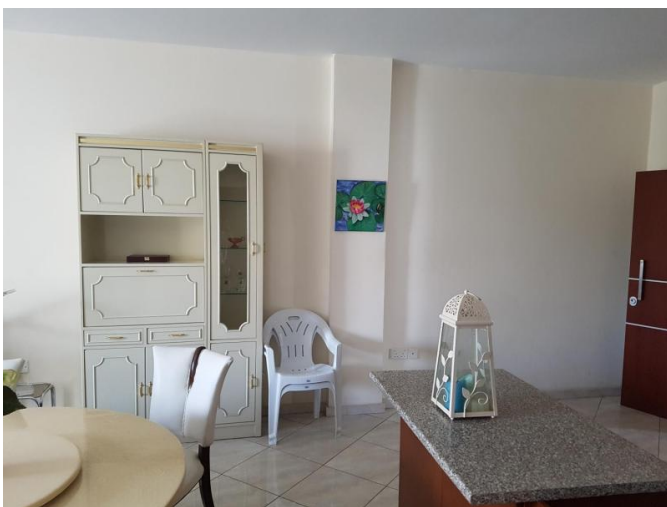
1 000 €/month



**SPACIOUS 2 BEDROOM APARTMENT OF  
100 SQM IN THE CITY CENTRE**

---

1 000 €/month



**SPACIOUS 2 BEDROOM APARTMENT OF  
100 SQM IN THE CITY CENTRE**

---

1 000 €/month



**SPACIOUS 2 BEDROOM APARTMENT OF  
100 SQM IN THE CITY CENTRE**

---

1 000 €/month

