

MODERN 2-BEDROOM APARTMENT IN THE QUIET RESIDENTIAL AREA IN THE CITY CENTER

1 750 €/month

Property Code:	2133	Type:	Long-term rent - Apartment
Location:	Limassol - PETROU AND PAVLOU	Internal Area:	80 m ²
Bedrooms:	2	Bathrooms:	2
Renovation:	Modern	Number of floors:	3
Year of construction:	2019	Distance to the sea:	1 km
Distance to airport:	60 km	Status:	New

Property features:

Unfurnished	Air Condition	Parking - Covered	Telephone Line
Store Room	Solar panels for hot water	Double Glazing	Oven
Washing machine	Dish washer	Cooker	Extractor Fan
Refrigerator	Balcony		

Description:

This amazing newish 2-apartment located in very quiet area in the centre of Limassol but only in 5 minutes' drive to Limassol Marina and with easy access to the highway,

Located in a building with 9 apartments, in the city center.

The apartment consists of 2 bedrooms. The apartment is fully equipped with electrical appliances and fully Air conditioned. Also, has one parking place and one storage room on the ground floor.

High quality finishes such as parquet floor, double glazed windows with electric shutters, A/C throughout, security doors, modern design, covered parking place and storage room.

The total covered verandas for the apartment is 83 sq. m.

RENTAL PRICE INCLUDES COMMON EXPENSES AND YEARLY PAYMENT FOR THE GARBAGE/ REFUSE REMOVAL CHARGES

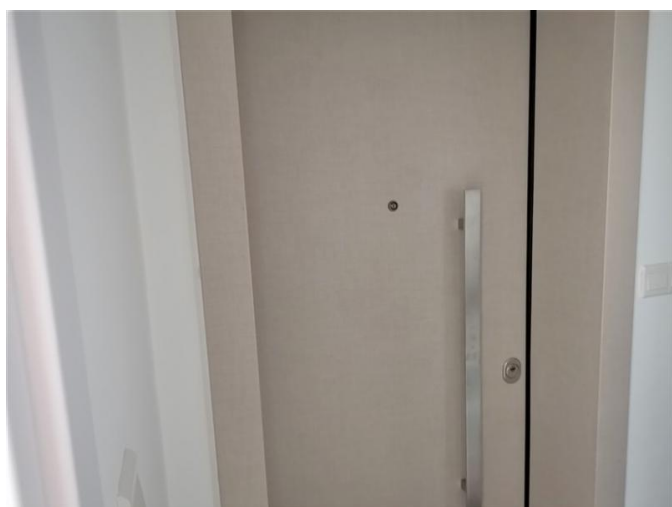
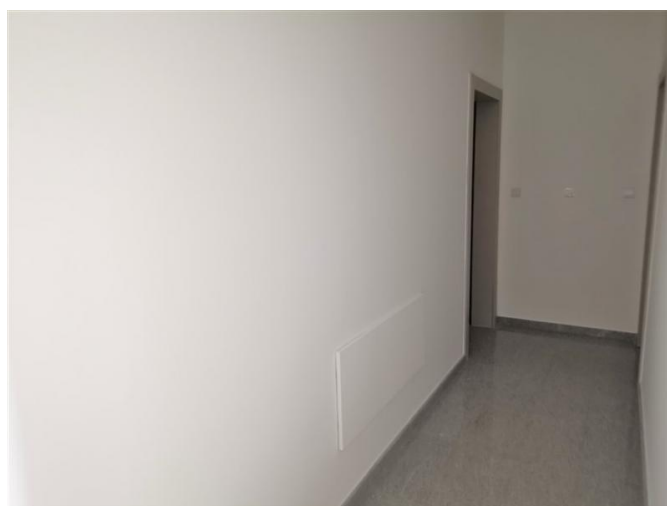
**MODERN 2-BEDROOM APARTMENT IN THE
QUIET RESIDENTIAL AREA IN THE CITY
CENTER**

1 750 €/month



**MODERN 2-BEDROOM APARTMENT IN THE
QUIET RESIDENTIAL AREA IN THE CITY
CENTER**

1 750 €/month



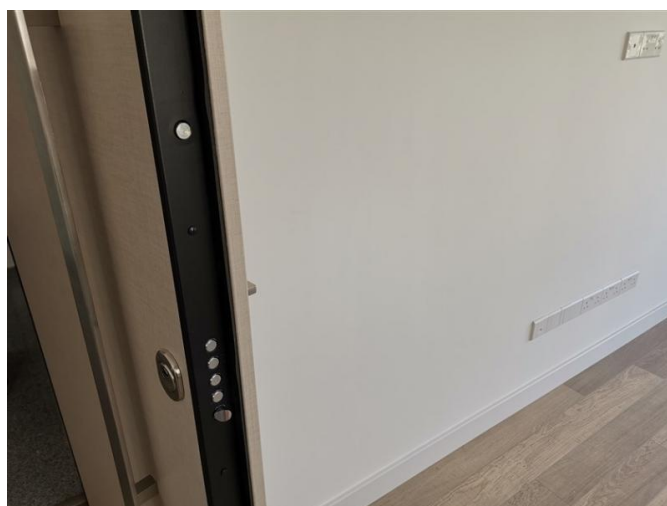
**MODERN 2-BEDROOM APARTMENT IN THE
QUIET RESIDENTIAL AREA IN THE CITY
CENTER**

1 750 €/month



**MODERN 2-BEDROOM APARTMENT IN THE
QUIET RESIDENTIAL AREA IN THE CITY
CENTER**

1 750 €/month



08.04.2026