

NEWISH 3 BEDROOM HOUSE IN SOUNI WITH SWIMMING POOL

1 200 €/month

Property Code:	2290	Type:	Long-term rent - House/Villa
Location:	Limassol - SOUNI	Internal Area:	150 m ²
Plot Area:	500 m ²	Bedrooms:	3
Bathrooms:	1	Number of floors:	2
Year of construction:	2018	Distance to the sea:	20 km
Distance to airport:	40 km		

Property features:

Unfurnished	Parking - Uncovered	Telephone Line	Private Pool
Store Room	Fireplace	Solar panels for hot water	Double Glazing
Garden	Cooker	Extractor Fan	Balcony

Description:

This is a three-bedroom family house, located in Souni village. A truly idyllic quiet area, far from the noise and traffic, full of pine trees and green areas. Unique designed house with 3 bedrooms, private swimming pool and garden. It has a plot size of 470 sq.m and internal areas of 150 sq.m. Also has a spectacular view of the Mediterranean sea as well as a view of Limassol town and in the other direction, the pine trees and the beauty of the nearby green areas can be admired.

The ground floor has a living and dining area, an open plan kitchen and a guest toilet. On the first floor, it has 3 bedrooms and a bathroom. In addition, it has a spacious yard at the back of the house with a swimming pool.

Furthermore, is close to the motorway and provides fast and easy access to Paphos airport and a 15-20 minute drive to Limassol town. Also close to all city amenities such as shopping, cultural activities, nightlife entertainment and fine restaurants.

NEWISH 3 BEDROOM HOUSE IN SOUNI WITH SWIMMING POOL

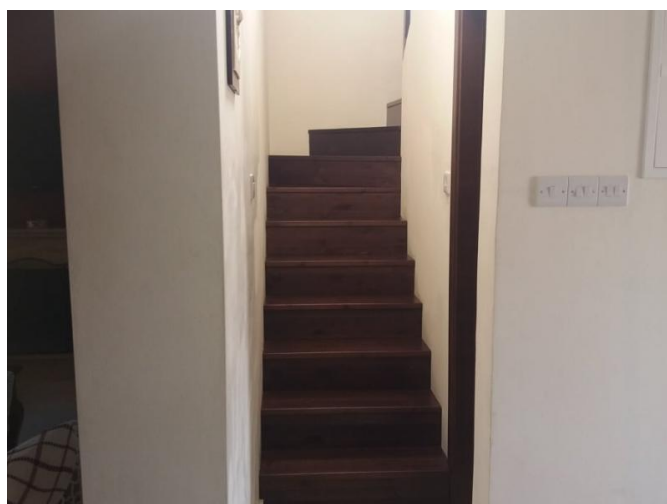
1 200 €/month



06.02.2026

NEWISH 3 BEDROOM HOUSE IN SOUNI WITH SWIMMING POOL

1 200 €/month



06.02.2026

NEWISH 3 BEDROOM HOUSE IN SOUNI WITH SWIMMING POOL

1 200 €/month

