

# LUXURY 3 BEDROOM APARTMENT WITH THE DIRECT EXIT TO THE BEACH

2 500 €/month  
~~2 700 €/month~~

<b>Property Code:</b>	2371	<b>Type:</b>	Long-term rent - Apartment
<b>Location:</b>	Limassol - POTAMOS GERMASOGIA	<b>Internal Area:</b>	130 m <sup>2</sup>
<b>Bedrooms:</b>	3	<b>Bathrooms:</b>	2
<b>Renovation:</b>	Renovated	<b>Distance to the sea:</b>	0 m
<b>Distance to airport:</b>	60 km	<b>Covered verandas, m<sup>2</sup>:</b>	15

## Property features:

Common Pool	Air Condition	Parking - Covered	Parking - Uncovered
Telephone Line	Alarm	Furnished	VRV central ceiling system
Double Glazing	Oven	Washing machine	Dish washer
Microwave	Cooker	Extractor Fan	Parking
Refrigerator	Balcony	Furniture	

## Description:

This 3 BR luxury apartment with stunning and unobstructed panoramic view is located in a very well-maintained building with a direct exit to the beach. The property is equipped with luxury furniture, all household equipment, MIELE electric appliances, a separate utility/laundry room, a security Alarm system, VRV engineering solution for a quality and comfortable life. There's a full family bathroom with a Jacuzzi shower and one more bathroom with a tube.

The building is situated on the front line and has a prime exit to the beach. Also, there's a common swimming pool with a sun terrace. Premises are gated and secured by video cameras 24/7.

The price is 2500eur/month .

Viewings are highly recommended!

**LUXURY 3 BEDROOM APARTMENT WITH  
THE DIRECT EXIT TO THE BEACH**

2 500 €/month  
~~2 700 €/month~~

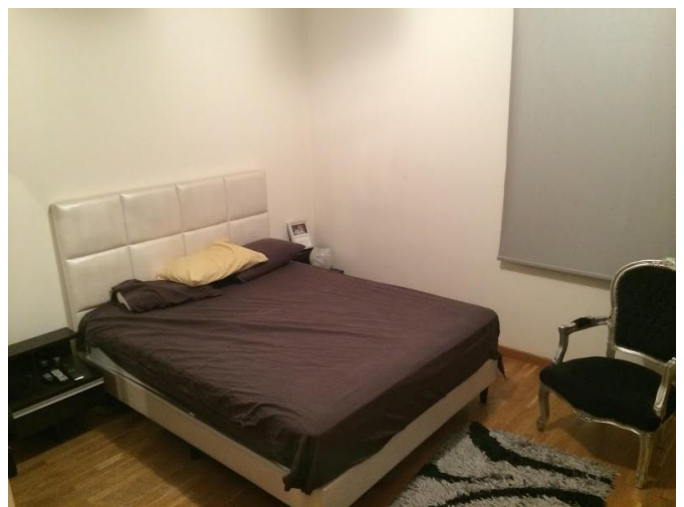
---



**LUXURY 3 BEDROOM APARTMENT WITH  
THE DIRECT EXIT TO THE BEACH**

2 500 €/month  
~~2 700 €/month~~

---



**LUXURY 3 BEDROOM APARTMENT WITH  
THE DIRECT EXIT TO THE BEACH**

2 500 €/month  
~~2 700 €/month~~

---



# LUXURY 3 BEDROOM APARTMENT WITH THE DIRECT EXIT TO THE BEACH

2 500 €/month  
~~2 700 €/month~~

