

LUXURIOUS 1 BEDROOM PENTHOUSE WITH AMAZING PANORAMIC VIEWS

1 600 €/month

Property Code:	2402	Type:	Long-term rent - Apartment
Location:	Limassol - COLUMBIA	Internal Area:	60 m ²
Bedrooms:	1	Bathrooms:	1
Energy class:	A	Year of construction:	2018
Distance to the sea:	1.1 km	Distance to airport:	65 km
Uncovered verandas, m²:	60		

Property features:

Heating	Air Condition	Parking - Covered	Parking - Uncovered
Telephone Line	Furnished	Store Room	Solar panels for hot water
Double Glazing	Washing machine	Dish washer	Cooker
Extractor Fan	Parking	Refrigerator	Balcony
Furniture			

Description:

Luxurious 1 BR penthouse of 60sqm in a brand new 3 store building with 4 apartments only is situated in a very quiet neighbourhood in Columbia/Germasogia area, which is close to all amenities, such as supermarkets, pharmacies, banks, schools and kindergartens, with smooth access to the high way, 5 min drive to the sea.

It consists of an open plan living/kitchen area facing a spacious outdoor covered veranda of 60 sqm with amazing panoramic and sea views. There's 1 double bedroom with a spacious balcony offering panoramic views as well, as a family bathroom. There's a storage of 10 sqm and a covered parking place.

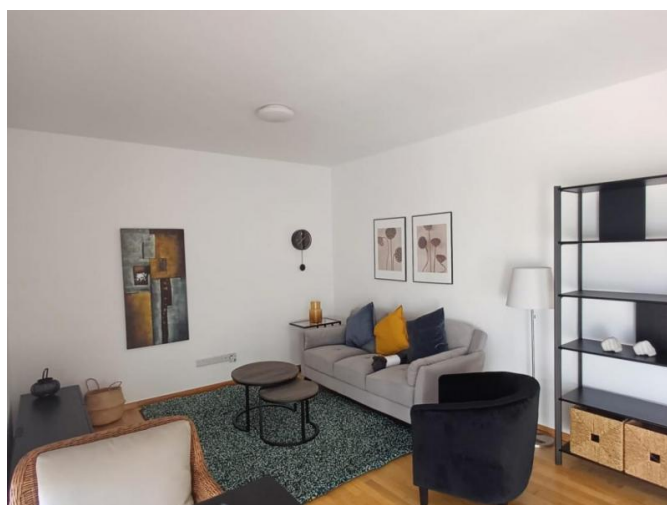
The property is built using high-end materials, such as double-glazed thermal isolated windows with electric shutters, A/C, wooden parquet flooring, high-quality sanitary wear and electric appliances, and solar panels for hot water preparation.

The apartment comes for rent fully furnished with all electric appliances included for the price 1600 eur/ month (common expenses included).

Viewings are very much suggested to be appreciated by the level and quality of the property.

LUXURIOUS 1 BEDROOM PENTHOUSE WITH AMAZING PANORAMIC VIEWS

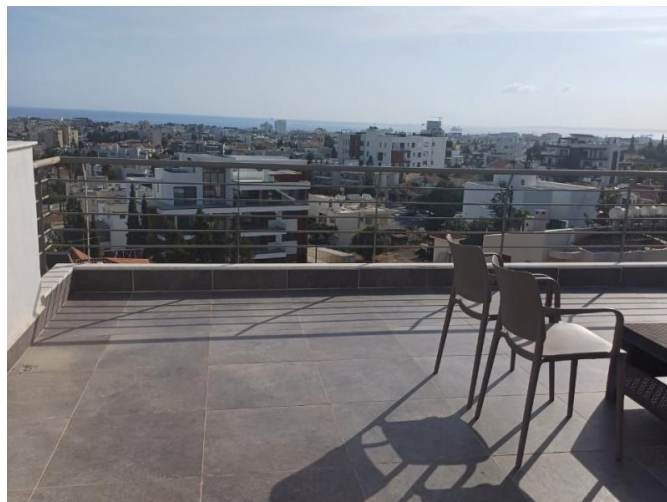
1 600 €/month



05.02.2026

LUXURIOUS 1 BEDROOM PENTHOUSE WITH AMAZING PANORAMIC VIEWS

1 600 €/month



05.02.2026

LUXURIOUS 1 BEDROOM PENTHOUSE WITH AMAZING PANORAMIC VIEWS

1 600 €/month



05.02.2026