

**BRAND NEW 3-BEDROOM WHOLE FLOOR
APARTMENT WITH 70 SQ.M. ROOF GARDEN
IN GERMASOGIA...**

3 500 €/month

Property Code:	2422	Type:	Long-term rent - Apartment
Location:	Limassol - POTAMOS GERMASOGIA	Internal Area:	160 m ²
Bedrooms:	3	Bathrooms:	3
Floor:	2	Number of floors:	3
Year of construction:	2020	Distance to the sea:	1.2 km
Distance to airport:	65 km	Status:	Under Construction
Covered verandas, 30 m²:			

Property features:

Common Pool	Air Condition	Parking - Covered	Telephone Line
Furnished	Store Room	Solar panels for hot water	Double Glazing
Garden	Oven	Microwave	Cooker
Extractor Fan	Parking	Refrigerator	Balcony
Furniture			

Description:

Important:

- * 14 minutes walking distance to the sea (1.2km)
- * 3-bedroom whole floor flats for rent (only 3 flats in the building)
- * Big communal Swimming pool & playground with gardens
- * Private road with roundabout
- * Complex of 6 blocks
- *Modern & luxury interior / exterior design
- *First-quality materials
- * 6500 m2 Land

Specification:

The apartment is situated in the great area of Potamos Germasogeia 14 minutes walking distance to the sea, 10 minutes drive east of the town centre and at the same time being within easy access of the highway linking all major towns on the island. Constructed in 6500m2 land, surrounded by gardens, park, playground, private road with a roundabout and a big communal swimming pool.

**BRAND NEW 3-BEDROOM WHOLE FLOOR
APARTMENT WITH 70 SQ.M. ROOF GARDEN
IN GERMASOGIA...**

3 500 €/month

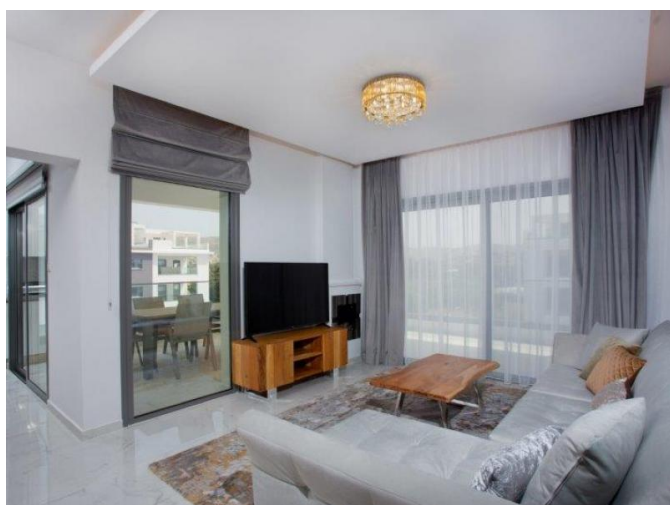
The building is constructed with high-quality materials, with our professional staff, and certainly with the care, quality and our long-term experience.

Included:

First quality sanitary ware and ceramics
Water mixers in bathroom brand CROHE
Carpentry with accessories systems in kitchen and wardrobes
Sliding Wardrobes in bedrooms
Kitchen's countertop from synthetic granite
All external doors and windows are an aluminium charcoal grey colour and double glassed glass.
Mosquito nets
Electric shutters in bedroom
Electrical underfloor heating
Entrance phone with colour camera
Fully Air conditioning units
Furnished
Fully lights
Fully curtains
Fully electrical supplies brand BOSCH
Rugs
Kitchen equipment
Linen
Alarm system
Security fireproof entrance door
Guest W.C.
Solar water system
Water pressure system
Communal mature garden
Electrical entrance gate
Private road with a big roundabout
Communal Playground
Communal swimming pool
Covered parking for each flat
Storage each flat

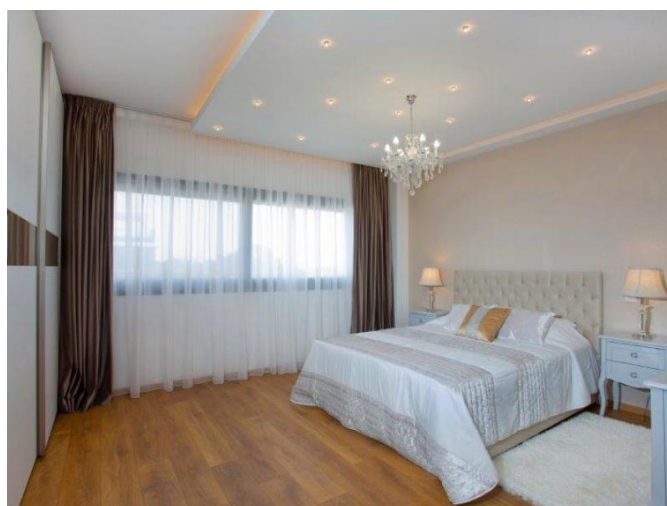
**BRAND NEW 3-BEDROOM WHOLE FLOOR
APARTMENT WITH 70 SQ.M. ROOF GARDEN
IN GERMASOGIA...**

3 500 €/month



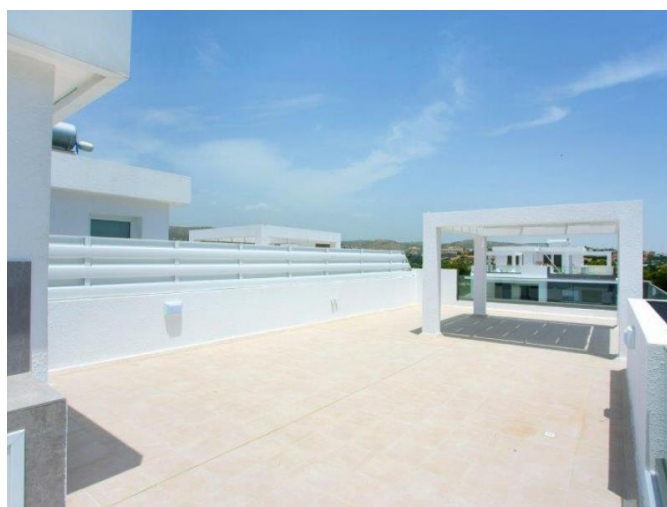
**BRAND NEW 3-BEDROOM WHOLE FLOOR
APARTMENT WITH 70 SQ.M. ROOF GARDEN
IN GERMASOGIA...**

3 500 €/month



**BRAND NEW 3-BEDROOM WHOLE FLOOR
APARTMENT WITH 70 SQ.M. ROOF GARDEN
IN GERMASOGIA...**

3 500 €/month



**BRAND NEW 3-BEDROOM WHOLE FLOOR
APARTMENT WITH 70 SQ.M. ROOF GARDEN
IN GERMASOGIA...**

3 500 €/month

