

---

<b>Property Code:</b>	2436	<b>Type:</b>	Long-term rent - Office
<b>Location:</b>	Limassol - MOLOS	<b>Internal Area:</b>	230 m <sup>2</sup>

---

**Property features:**

---

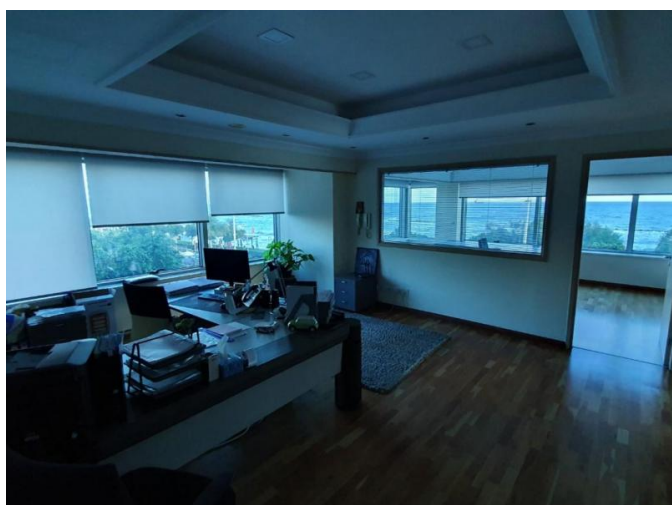
Air Condition	Parking - Covered	Telephone Line	Furnished
VRV central ceiling system	Double Glazing		

**Description:**

Prestigious and luxurious office space is now available for RENT facing the Limassol seafront on a commercial newly refurbished and impressive building. This buildings location offers easy and quick access with key arterial roads. This sophisticated office area consists of 230sqm (1st floor - Office No: 12), 4 bright stylish glamorous spacious rooms: 1 very large reception/entrance area, 1 centre office, 1 office facing the sea, 1 extra-large open plan director's office that includes a conference and sitting area.

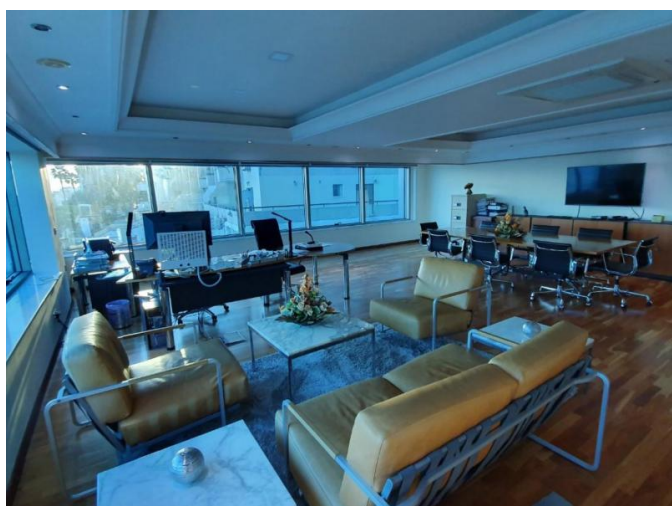
This office enjoys a range of facilities and features to benefit any business, as it is ideally located nearby a range of business centres and institutions. It is also, within an ideal short distance from the Limassol courthouse and surrounded by plenty of local amenities, cafes and restaurants.

- Fully Furnished
- Adequate Telephone Lines
- Sufficient Electrical Provisions
- False-ceiling in all Areas with LED lighting
- 2 bathrooms with Marble Deco (Directors Office Toilet has Private Shower)
- Fully VRV Air-Conditioned (Mitsubishi)
- Fibre Optics Internet Connection
- Secured Building Entrance with Videophone Monitor  Office Door Intercom and CYPCANA Alarm System
- Ample Fitted Cupboards space throughout the office
- New Semi Black Out Blinds on all windows
- Secured Entrance to Building
- Parquet Flooring
- Kitchenette + Small Pantry
- Closet Coat Space next to the kitchenette
- Elevators x2 (new)
- Server Room with AC
- 1 Basement Covered Parking
- Close to Amenities
- Close to Large Enaerios Municipality Parking.



**OFFICE OPPOSITE THE SEA ENAERIOS  
AREA**

6 000 €/month



# OFFICE OPPOSITE THE SEA ENAERIOS AREA

6 000 €/month

---

