

# SPACIOUS OFFICE FOR RENT CLOSE TO LIMASSOL MARINA

15 000 €/month

<b>Property Code:</b>	2440	<b>Type:</b>	Long-term rent - Office
<b>Location:</b>	Limassol - OLD PORT	<b>Internal Area:</b>	612 m <sup>2</sup>
<b>Floor:</b>	5	<b>Number of floors:</b>	6

## Property features:

Air Condition	Telephone Line	Double Glazing	Parking
---------------	----------------	----------------	---------

## Description:

612 square meters

- Custom design internal office layout and partitioning
- VRV Air Conditioning system (cold/heat) with Individual controls
- Fire alarm
- Fiber Optic option available
- Phone lines available
- Structure cabling and electricity supply points around the office
- Window Blinds
- Double Glazed windows
- 24 hours access to office
- External secure door for office
- Access control
- Security alarm
- Kitchen area
- Toilet facilities
- 7 parking spaces

## BUILDING FACILITIES

- Main Reception area of the building
- Sorting and delivering of daily mail
- **Information and services useful for Your business**
- Security

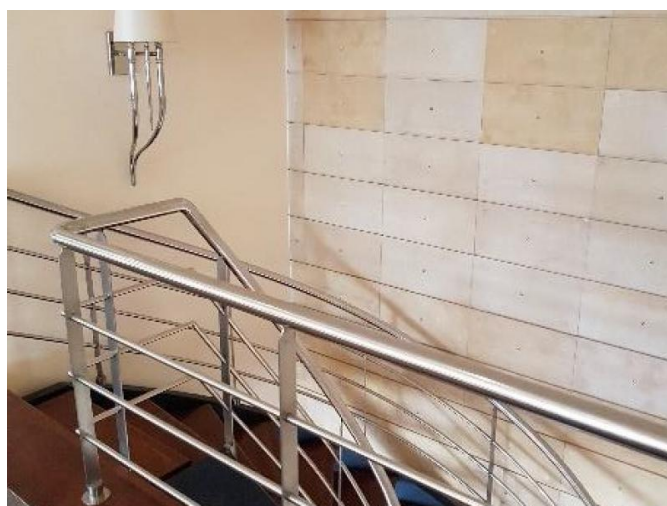
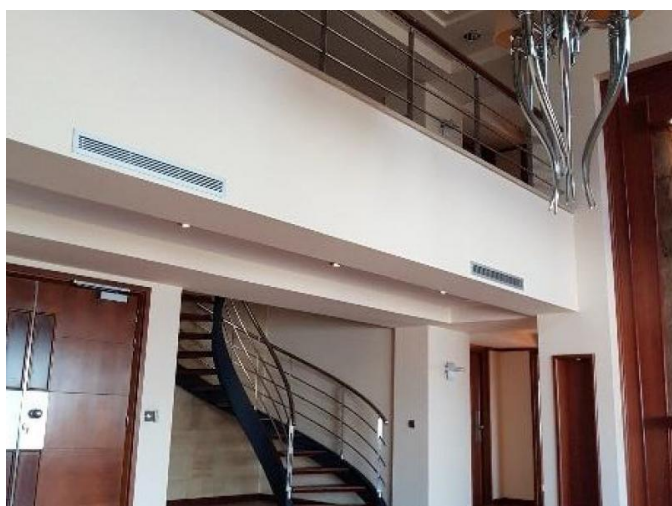
- **Access controlled system**
- **Camera Surveillance of entrances and common areas**
- **Four high speed elevator shuttles between the seven floors accessed initially for additional security via main entrance and reception area**
- Guests waiting rooms
- Up to 650 phone lines
- **Logo at the main entrance of the building and the main entrance of the floor**
- Maintenances services
- Daily cleaning of communal areas
- **Parking services (up to 300 secured and covered parking spaces)**



## SPACIOUS OFFICE FOR RENT CLOSE TO LIMASSOL MARINA

---

15 000 €/month



---

07.02.2026



## SPACIOUS OFFICE FOR RENT CLOSE TO LIMASSOL MARINA

---

15 000 €/month



## SPACIOUS OFFICE FOR RENT CLOSE TO LIMASSOL MARINA

---

15 000 €/month



---

07.02.2026