

**NEW RECENTLY COMPLETED 4-BEDROOM
HOUSE OF 280 M2 PLUS SEPARATE MAIDS
QUARTER ON A PLOT...**

550 000 €

| | | | |
|------------------------------|---------------------|-----------------------------|--------------------|
| Property Code: | 2467 | Type: | Sale - House/Villa |
| Location: | Limassol - TRACHONI | Internal Area: | 401 m ² |
| Plot Area: | 579 m ² | Bedrooms: | 4 |
| Bathrooms: | 4+ | Number of floors: | 3 |
| Year of construction: | 2024 | Distance to the sea: | 2 km |
| Distance to airport: | 65 km | Status: | New |
| VAT: | NO VAT | | |

Property features:

| | | | |
|----------------------------|----------------|------------|--------------|
| Parking - Uncovered | Telephone Line | Store Room | Laundry room |
| Solar panels for hot water | Double Glazing | Garden | Maids Room |
| Balcony | | | |

Description:

The property consists of a full size plot which is 579m2 and the house in 3 levels (house + basement), each area is about 140m2. The total internal areas are about 401m2. The house consists of a large patio at the one side and a basement which was converted into a large two bedrooms apartment. The house consists of a large living room area + a large separated kitchen, a large laundry area + 4 spacious bedrooms and total 3 wc with 2 bathrooms.

The property is located within about 10 minutes driving distance from the Limassol My Mall and the new Limassol casino. It has been built for own use with quality material and the constructions is excellent. There is a provision for the installation of a/c units. The basement area can be used as a separated house, as a study area, as a playroom area. The basement offers a large undivided area which can easily be divided as needed. The style of the house is neo classic. There is no additional vat charge for this property, it is an unused resale property. Provision of heating with fuel. (4 beds house plus basement with extra rooms). separate room for extra walk-in wardrobe. The house is situated close to the private English school Silver Line and other amenities. The property is within the British Sovereign Base.

**NEW RECENTLY COMPLETED 4-BEDROOM
HOUSE OF 280 M2 PLUS SEPARATE MAIDS
QUARTER ON A PLOT...**

550 000 €



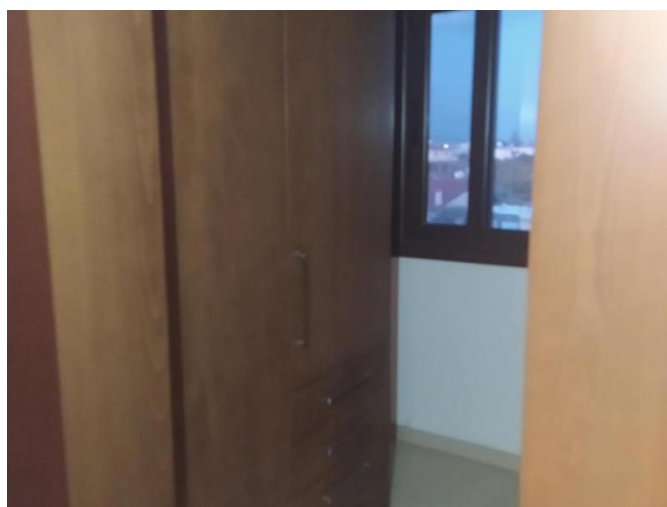
**NEW RECENTLY COMPLETED 4-BEDROOM
HOUSE OF 280 M2 PLUS SEPARATE MAIDS
QUARTER ON A PLOT...**

550 000 €



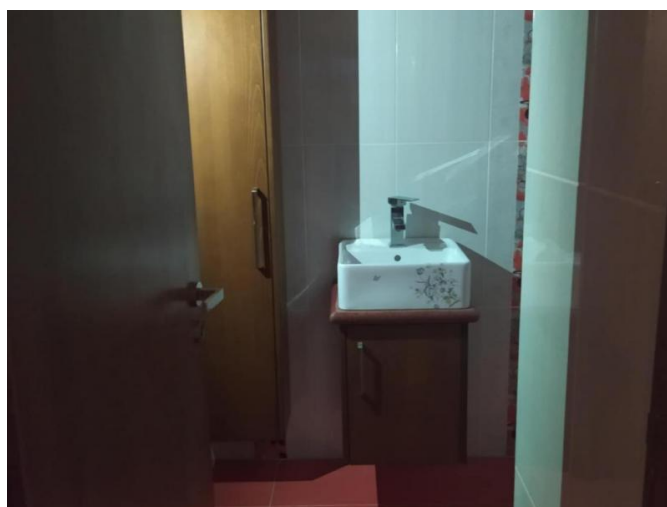
**NEW RECENTLY COMPLETED 4-BEDROOM
HOUSE OF 280 M2 PLUS SEPARATE MAIDS
QUARTER ON A PLOT...**

550 000 €



**NEW RECENTLY COMPLETED 4-BEDROOM
HOUSE OF 280 M2 PLUS SEPARATE MAIDS
QUARTER ON A PLOT...**

550 000 €



**NEW RECENTLY COMPLETED 4-BEDROOM
HOUSE OF 280 M2 PLUS SEPARATE MAIDS
QUARTER ON A PLOT...**

550 000 €

