

COMMERCIAL SHOP ON MAIN AVENUE IN
THE MOST DESIRABLE AREA OF POTAMOS
GERMASOGEIAS

on request

Property Code:	224	Type:	Sale - Shop
Location:	Limassol - POTAMOS GERMASOGIA	Internal Area:	422 m²
Status:	Off Plan	VAT:	Plus

Property features:

Unfurnished	Heating	Parking - Covered	Parking - Uncovered
Telephone Line	Alarm	VRV central ceiling system	Store Room
Double Glazing			

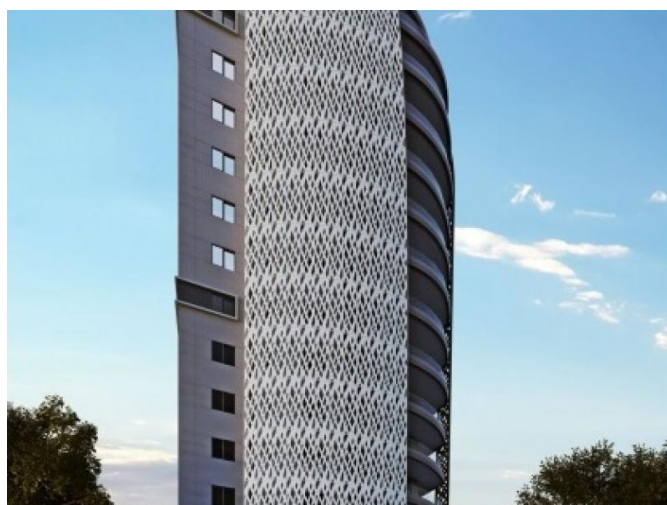
Description:

Inspired by the waves of the sea and the curves of the windblown sails, this is a unique project on the Limassol coast. The elegantly shaped residential tower perfectly combines luxury, privacy, tranquillity, on a busy avenue, steps away from the the sea. This commercial shop comprises of the main ground floor shop of 296m2 ad mezanine of 94m2, plus covered verandas of 32 m2. Convenient car park available in a separate area behind the building. Technical Specifications:

- Full climate control
- Underfloor heating
- Fresh air circulation system
- Double glazed low e-windows with sound and light insulation
- LED lights
- High speed ultra-quiet stainless steel lifts
- Water pressure system
- Photovoltaic technology for low energy emissions
- Smart technology systems
- Top luxury marbles, parquets and materials throughout the apartments and the common areas of the building
- Full security and privacy systems

COMMERCIAL SHOP ON MAIN AVENUE IN THE MOST DESIRABLE AREA OF POTAMOS GERMASOGEIAS

on request



**COMMERCIAL SHOP ON MAIN AVENUE IN
THE MOST DESIRABLE AREA OF POTAMOS
GERMASOGEIAS**

on request

