

## BRAND NEW STYLISH 2 BD TOWNHOUSE LOCATED IN THE PRIVATE COMPLEX

1 600 €/month

<b>Property Code:</b>	2621	<b>Type:</b>	Long-term rent - Townhouse
<b>Location:</b>	Limassol - POTAMOS GERMASOGIA	<b>Internal Area:</b>	78 m <sup>2</sup>
<b>Bedrooms:</b>	2	<b>Renovation:</b>	Modern
<b>Number of floors:</b>	2	<b>Heating:</b>	Underfloor heating
<b>Distance to the sea:</b>	300 m	<b>Distance to airport:</b>	60 km
<b>Status:</b>	Resale		

### Property features:

Heating	Air Condition	Telephone Line	Solar panels for hot water
Double Glazing	Oven	Washing machine	Cooker
Extractor Fan	Parking	Refrigerator	Balcony
Furniture			

### Description:

brand new stylish 2 bd townhouse located in the private complex

30 meters from the beach in the very heart of Limassol tourist area, they constitute the ideal property investment opportunity.

Each townhouse consists of 78 sq. meters of covered area, a veranda and a private garden of 14sq. meters.

Both townhouses designed in the same fresh and relaxing nautical theme. INSTALLED UNDERFLOOR HEATING.

Solar panels.

2 bedrooms and 2 bathrooms,

Fully furnished and ideally equipped for short term rent. A gated and guarded parking area, reserved exclusively for residents, is available.

Could be sold with pre-made bookings, letting the new owner begin profitting from the investment immediately.

**BRAND NEW STYLISH 2 BD TOWNHOUSE  
LOCATED IN THE PRIVATE COMPLEX**

---

1 600 €/month



---

17.01.2026



**BRAND NEW STYLISH 2 BD TOWNHOUSE  
LOCATED IN THE PRIVATE COMPLEX**

---

1 600 €/month



---

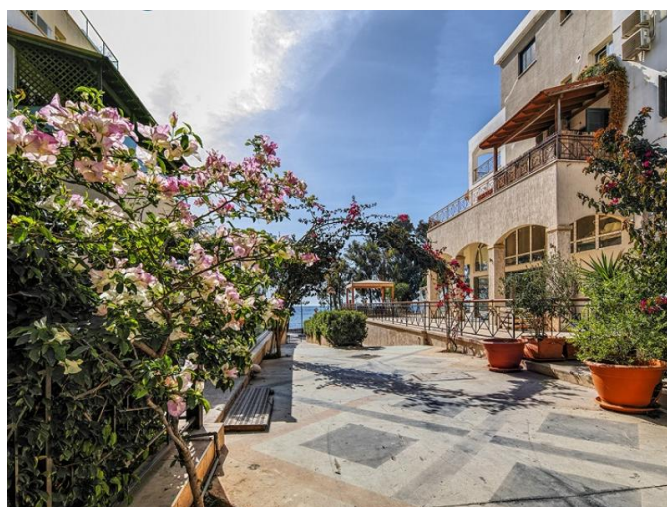
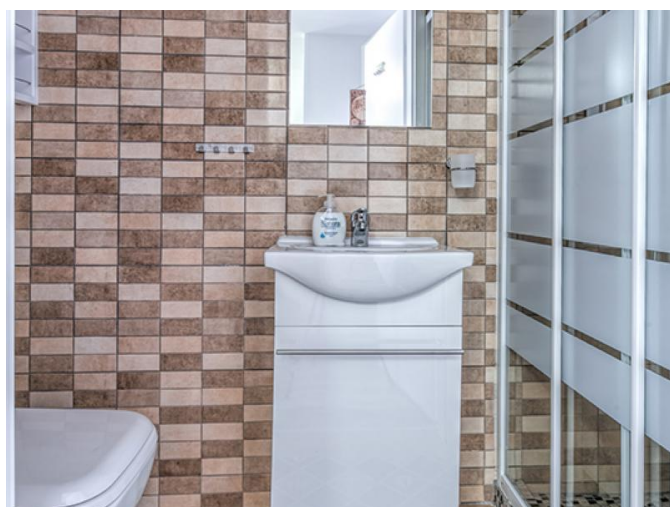
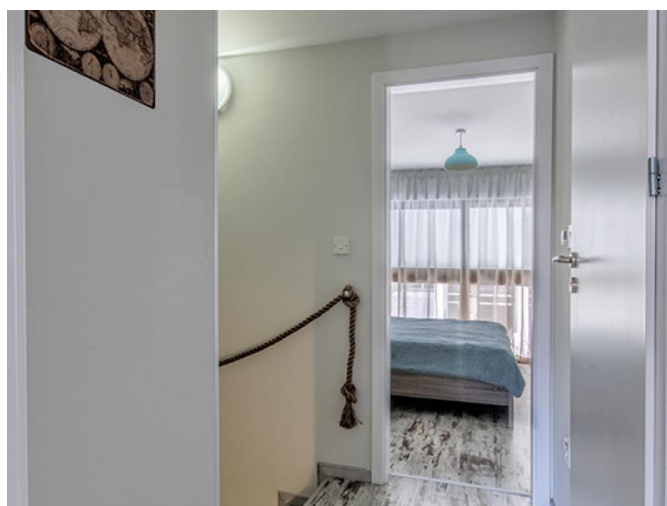
17.01.2026



**BRAND NEW STYLISH 2 BD TOWNHOUSE  
LOCATED IN THE PRIVATE COMPLEX**

---

1 600 €/month



---

17.01.2026

## BRAND NEW STYLISH 2 BD TOWNHOUSE LOCATED IN THE PRIVATE COMPLEX

---

1 600 €/month



---

17.01.2026