

MODERN FULLY FURNISHED 2-BEDROOM APARTMENT IN THE NEWISH RESIDENTIAL COMPLEX IN THE...

4 700 €/month

Property Code:	2638	Type:	Long-term rent - Apartment
Location:	Limassol - POTAMOS GERMASOGIA	Internal Area:	108 m ²
Bedrooms:	2	Bathrooms:	2
Renovation:	Modern	Floor:	4
Number of floors:	5	Heating:	Underfloor heating
Energy class:	A+	Year of construction:	2020
Distance to the sea:	700 m	Distance to airport:	65 km
Status:	New	VAT:	NO VAT

Property features:

4th Floor Apartment	Common Pool	Heating	Air Condition
Telephone Line	Furnished	Store Room	Solar panels for hot water
Double Glazing	Garage	Garden	Oven
Washing machine	Dish washer	Cooker	Extractor Fan
Parking	Refrigerator	Balcony	Furniture

Description:

Residential Complex comprises of luxury apartments and houses and is located in Yermasogia, Limassol. Main building has 19 apartments on 5 floors, with additional common spaces on the ground and underground floor levels. Common spaces are a luxury entrance lobby, open and closed areas of playground and everyday workout, shower rooms and an external swimming pool of 22m length. There is a covered parking and a separate spacious storage room at the underground level.

RECREATIONAL ACTIVITIES

- Special designed interior playground with easy access to a secured outdoor area for children to play on
- Closed gym area with top quality equipment and an outdoor area for CrossFit workout, both with specialized gym flooring
- Outdoor swimming pool of 22m length and deck flooring at the pool area
- Kiosk with pool bar
- Surrounding landscaped green area at the property is giving both privacy and a sense of wellbeing.

19.02.2026

**MODERN FULLY FURNISHED 2-BEDROOM
APARTMENT IN THE NEWISH
RESIDENTIAL COMPLEX IN THE...**

4 700 €/month

The price is 4,700 euros plus common expenses.

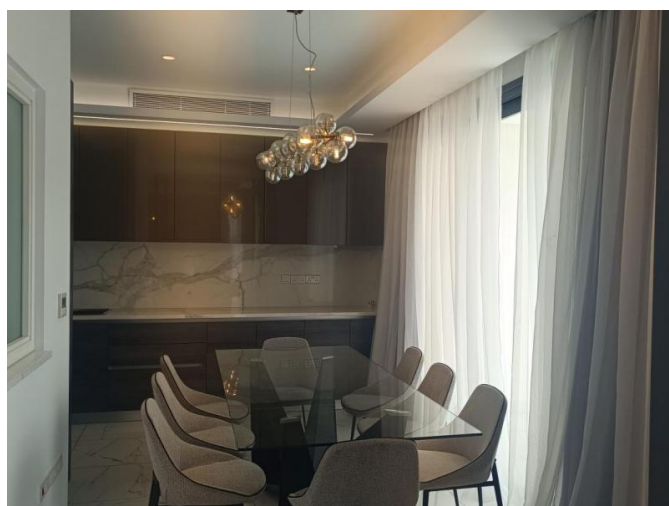
MINIMUM 1 YEAR CONTRACT

DEPOSIT - 2 MONTHS



**MODERN FULLY FURNISHED 2-BEDROOM
APARTMENT IN THE NEWISH
RESIDENTIAL COMPLEX IN THE...**

4 700 €/month



19.02.2026

**MODERN FULLY FURNISHED 2-BEDROOM
APARTMENT IN THE NEWISH
RESIDENTIAL COMPLEX IN THE...**

4 700 €/month



19.02.2026